



**GREENBURG**

Live Fresh



Design & Construction by :  **LARSEN & TOUBRO**  
It's all about Imagineering

### Just think about...

- ...the security of being involved in a fully licensed & a fully approved project
- ...the satisfaction of exploring the sample flat on the very first day of project launch
- ...the feeling of confidence when home loans and allotment documents are available on the very first day you make the booking
- ...placing your trust in a company that assures superior quality and complete customer satisfaction
- ...the joy of anticipation, of watching the construction going on in full swing on the very first day of booking
- ...the contentment of building your future with a company that's financially capable of absorbing all unforeseen exigencies

While these idealistic promises may have only been possible in the realm of imagination, **Microtek Infrastructures Pvt. Ltd. has made them a part of its reality.**

### THE ACTION GROUP

In the last 4 decades, Action Group has come a long way. From a small team of just 20 people, the group today boasts of a workforce of more than 20,000 employees, spread across offices located in 50 cities in 3 countries. Action Group's first endeavour in 1972 reaped rich rewards and we soon became the largest shoe manufacturer (**Action Shoes**) in India.

From being India's biggest shoe manufacturing company, we have today grown into a huge conglomerate of diversified businesses.

The Group has established itself in India as:

- One of the largest **Inverter & UPS Manufacturer (Microtek)**
- One of the largest **Interior Infrastructure Company (Action TESA)**
- The largest **Flex Manufacturer (Pioneer Flex)**
- The third largest **Plasticizer Producer (API Chemicals & Fertilizers)**
- A **Steel Producer (API ISPAT)**
- The **third largest Hospital in Delhi (Sri Balaji Action Cancer Medical Institute)** offering world class integrated healthcare facilities and imparts medical care to the weaker sections of the community.

Apart from making new investments in the **Power Sector (Action Infraprojects)** in India, the group crossed international borders and has made a substantial name for itself in **Coal Mining (INSA Coal Holdings)** and **Silica Mining (Incubex Minerals)** businesses in South Africa.

Today, Action Group stands proud as a giant Indian multi-nation group ready to take on any challenge and opportunity across the globe.

### THE OKAYA GROUP

Okaya Power Group is in the business of **creating extraordinary opportunities** and making a difference to all that it touches and beyond. We at Okaya Power Group stand for **Integrity, Innovation, Enrolment and Profound Relationships**.

Our brand promise is to provide minimum product lifecycle cost to consumers through design and manufacturing excellence.

Our strategy is to execute with speed, rhythm and pro-activeness.

We make a difference to the lives we touch by providing them with uninterrupted power backup solutions and pure-mineralized drinking water solutions. We do our bit to keep the Earth clean by recycling non-ferrous metal scrap in an environment friendly manner. We help keep the Earth green by providing solutions for generating energy from renewable sources. We also contribute to India's economy by exporting software to the United States of America and provide IT office spaces to budding entrepreneurs and corporate conglomerates. The **OKAYA FOUNDATION** serves the needy and the poor by providing them with skill development, free education, free clean water, free power backup as well as free spectacles and hearing aids by means of its multiple initiatives. **Okaya, Nasaka, Microtek, Okaya Infocom, Mtek Power, Digipower, Okaya Wheelz, Okaya Joos, Metal Green and Blue Silicon** are all well known brands of the group that actively contribute to the nation's growth.

## GREEN.

### A WORD WITH A REFRESHING RING TO IT

Born out of greenery, the Eden of Greenburg is imbued with the same mystical paean that runs through a lush countryside. Inspired by the generosity of Mother Nature that protects and provides, nurtures and guides- experience a blossoming paradise amidst the luxuriance of verdant delights.

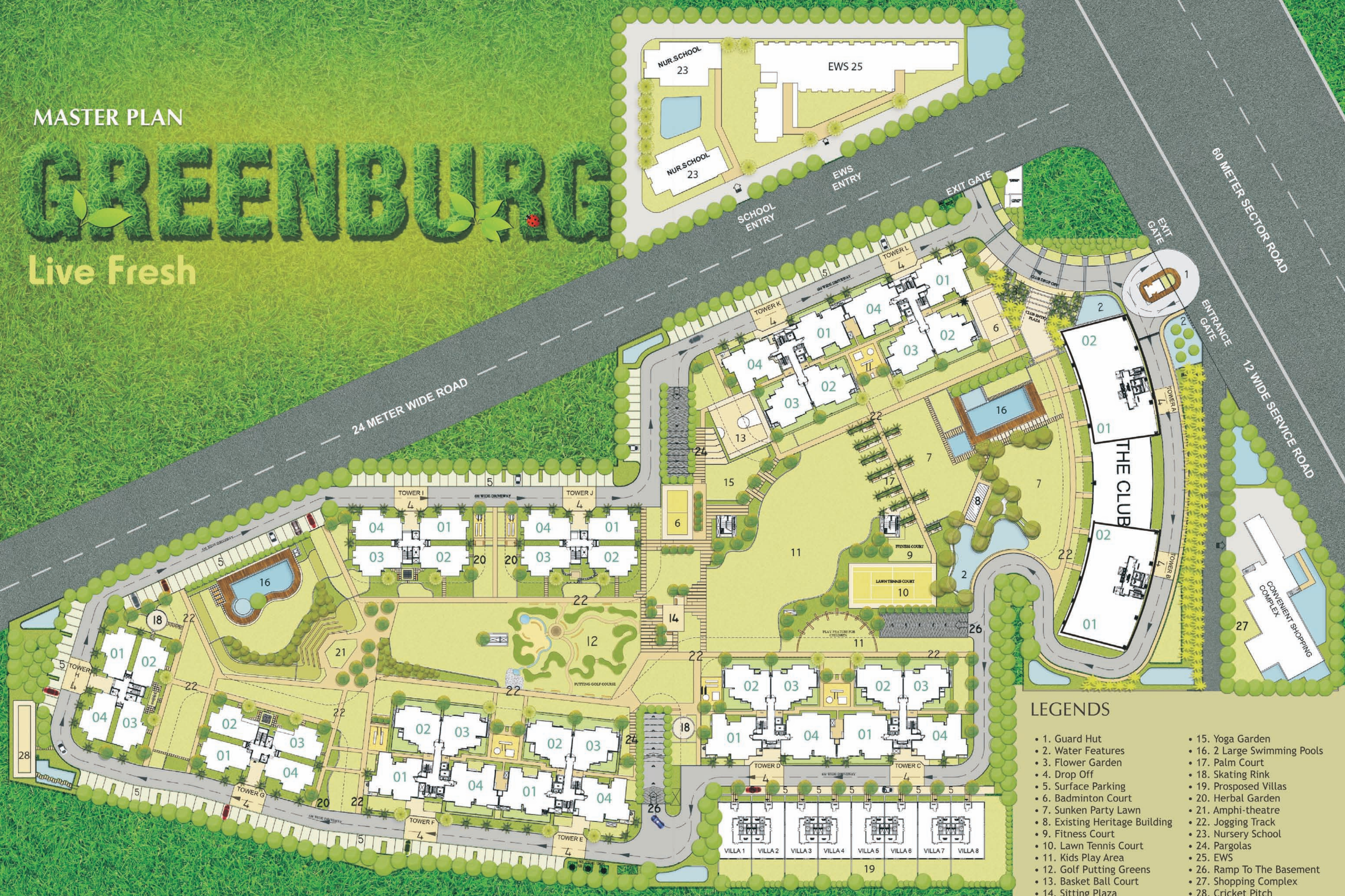
Welcome to Greenburg.



MASTER PLAN

# GREENBURG

Live Fresh



## LEGENDS

- 1. Guard Hut
- 2. Water Features
- 3. Flower Garden
- 4. Drop Off
- 5. Surface Parking
- 6. Badminton Court
- 7. Sunken Party Lawn
- 8. Existing Heritage Building
- 9. Fitness Court
- 10. Lawn Tennis Court
- 11. Kids Play Area
- 12. Golf Putting Greens
- 13. Basket Ball Court
- 14. Sitting Plaza
- 15. Yoga Garden
- 16. 2 Large Swimming Pools
- 17. Palm Court
- 18. Skating Rink
- 19. Proposed Villas
- 20. Herbal Garden
- 21. Amphi-theatre
- 22. Jogging Track
- 23. Nursery School
- 24. Pargolas
- 25. EWS
- 26. Ramp To The Basement
- 27. Shopping Complex
- 28. Cricket Pitch

Tower	Unit No.	Unit Type
A & B	1 & 2	4 BHK + Sq
C, D, E, F, K, L	1 & 4	3 BHK + Study + Sq
C, D, E, F, K, L	2 & 3	3 BHK + Sq
G, H, I, J	1, 2, 3 & 4	2 BHK + Study

# SECTOR 86, NEW GURGAON - THE PINNACLE OF SUCCESS, COMMERCIAL MAJESTY AND CONVENIENCE

Witnessing a phenomenal growth in infrastructural and real estate development, sector 86 is slated to become the epicenter of life and business in New Gurgaon.

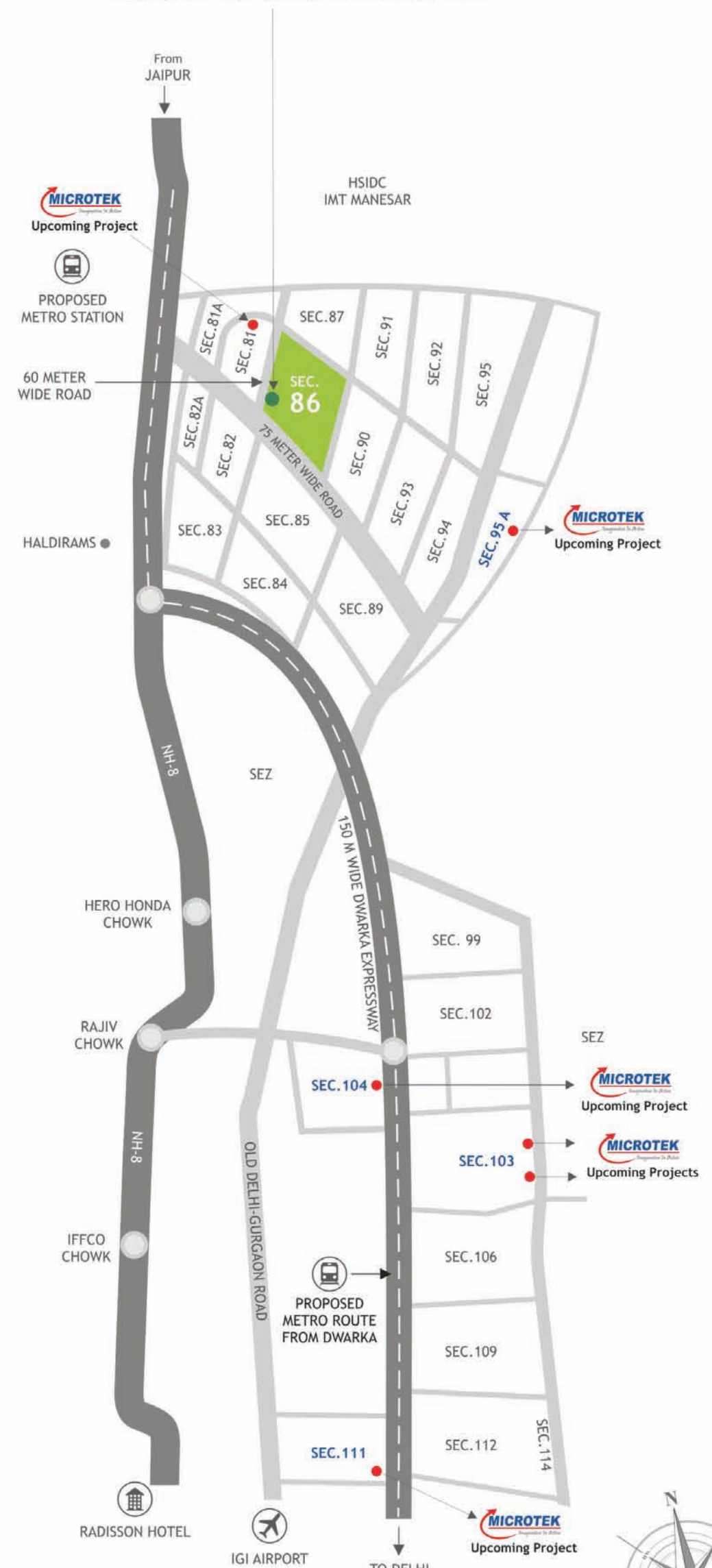
Close Proximity to:

- Northern Periphery Road (NPR)
- Kundli-Manesar Palwal Expressway (KMP)
- Multi-utility Corridor
- Manesar Industrial Base
- Numerous Commercial and Retail setups
- Proposed site for Modern School
- Within the vicinity of well known hotels - Hyatt & Marriot
- 100 acres proposed Golf Course



[www.abcbuildcon.in](http://www.abcbuildcon.in)

# GREENBURG



- **Well within the reach of:**
  - 20 MINUTES (APPROX.) DRIVE TO IGI
  - 2 MINUTES (APPROX.) DRIVE TO NH-8
  - 3 MINUTES (APPROX.) DRIVE TO PROPOSED METRO STATION
  - 5 MINUTES (APPROX.) DRIVE TO NORTHERN PERIPHERY ROAD



The location map shown here is a partial route in general. It may differ from the actual route.

+91 8470930121



## THE ART OF LUXURY LIVING

Greenburg's resplendent aesthetics is a visible commitment to luxury and acres of artistic greenery-be it the grassy golf course or the verdure manicured lawns or the refreshing water features. It's your chance to experience a slice of heaven, right here on earth.

- 75 percent apartments open to green
- 2 Large swimming pools
- Golf putting greens
- 3 side open apartments
- High-end luxury features & facilities
- 20000 sq. ft. high-end club

Live Fresh



**Refreshingly green,  
everyday!**

Birds Eye View of Greenburg, Sector 86, Gurgaon.

[www.abcbuildcon.in](http://www.abcbuildcon.in) | +91 8470930121



## ENTRANCE WITH A VIEW

The imperial 60 meter entrance of the Greenburg kingdom opens up to a 12 meter wide service lane. Be greeted by exotic seasonal blooms and enchanting water features at separate entrance and exit gates. With stringent security checks being a part of the multi-tiered security system, exclusivity is definitely a part of the Greenburg package.

[www.abcbuildcon.in](http://www.abcbuildcon.in) | +91 8470930121



## EXPERIENCE BLISS AT OUR ULTRA-LUXURIOUS INDOOR CLUB

Masterfully conceived and stunningly beautiful, the luxurious indoor club offers an eclectic array of indulgences. From the well-equipped gym, to our ultra-luxurious spa, multi utility hall, card & hobby room, library to a range of exciting indoor sporting facilities and a slew of other recreational options, prepare yourself for a relaxing rendezvous with life.



Restaurant



Café



Health Club



Spa



Library



Multi-utility Hall



Squash Court



Card & Hobby Room



Billiards Room



Table Tennis Room





## TAKE LAPS OF LUXURY IN YOUR TWO LARGE **SWIMMING POOLS**

The pride of Greenburg is its two large swimming pools with wooden decks and a splash pool for the kids. Feel inspired to swim your way to athletic fitness, laze around in deck chairs and plan fun pool parties. There cannot be a better way to spend quality time with your family.

[www.abcbuildcon.in](http://www.abcbuildcon.in) | +91 8470930121



GOLF PUTTING  
GREENS

TAKE A MINI VACATION AT OUR  
EXQUISITELY DESIGNED  
**OUTDOOR LEISURE CLUB**

[www.abcbuildcon.in](http://www.abcbuildcon.in) | +91 8470930121



AMIDST THE NEVER ENDING GREENERY, THROUGH ANCIENT TREES, FLOWER GARDENS AND WATER BODIES ARE MYRIAD RECREATIONAL OPTIONS TO MAKE YOU TAKE A MINI-VACATION FROM LIFE.

Hit a birdie at the lush golfing greens or shoot the hoops in the basketball court, practice yogic stretching, brush up your talent in the amphitheatre or host a weekend get together in the party lawn. There are abundant excuses for you to step out, make new friends and have the time of your life.



Amphi-theatre



Cricket Pitch



Jogging Track



Cycling Track



Kids Play



Golf Putting Green



2 Swimming Pools



Party Lawn



Theme Gardens  
Herbal & Botanical Garden



Basketball Court



Yoga Lawn



Skating Rink

[www.abcbuildcon.in](http://www.abcbuildcon.in) | +91 8470930121

## GREET NATURE IN ALL ITS PRISTINE GLORY FROM YOUR SPACIOUS BALCONY

Step outside onto your spacious balcony and be greeted by mile upon mile of lush greenery, shimmering pools of water nestled amidst golf putting greens, yoga lawns and flower gardens. With all rooms boasting of an attached balcony, you can celebrate the magnificence of nature and feel positive energies seep into your being. The stylish combination of toughened glass with stainless steel railings ensure complete safety while really adding to the aesthetics, giving your balcony a truly artistic finish.





## TAKE YOUR FIRST STEP INTO PARADISE WITH **THE LIVING ROOM**

Feel physically refreshed and spiritually reborn in the luxury of scientifically designed living spaces. The sheer opulence of your living room with its 10.4 feet floor to floor height is matched with the spacious, airy and aesthetically planned apartment it opens up to. With an attached balcony to the living room and every other room, bask in the benign positive energies and natural ventilation that flow through your house night and day.

• Italian marble flooring • Modular switches • Air-conditioners in all rooms • 7.5 ft clear height hardwood door frames



A FAMILY THAT EATS TOGETHER, STAYS TOGETHER.  
**THE DINING AND KITCHEN SPACES**

[www.abcbuildcon.in](http://www.abcbuildcon.in) | +91 8470930121



## ADD A DASH OF SPICE TO LIFE IN THE **DINING SPACE**

Your meticulously planned, spacious dining room comes with an option to include a classy breakfast counter conveniently attached to the Premium Modular Kitchen. Enjoy hearty meals with the family, invite guests over for an impromptu dinner party and stay connected with those who matter the most to you.



## COOK IN STYLE IN YOUR **PREMIUM MODULAR KITCHEN**

The large, airy Premium Modular Kitchen with top-of-the-line cabinets and fittings has been designed to ensure maximum utilization of space and offer you a clutter free culinary environment. So don the chef's hat and treat your family to a five course feast.

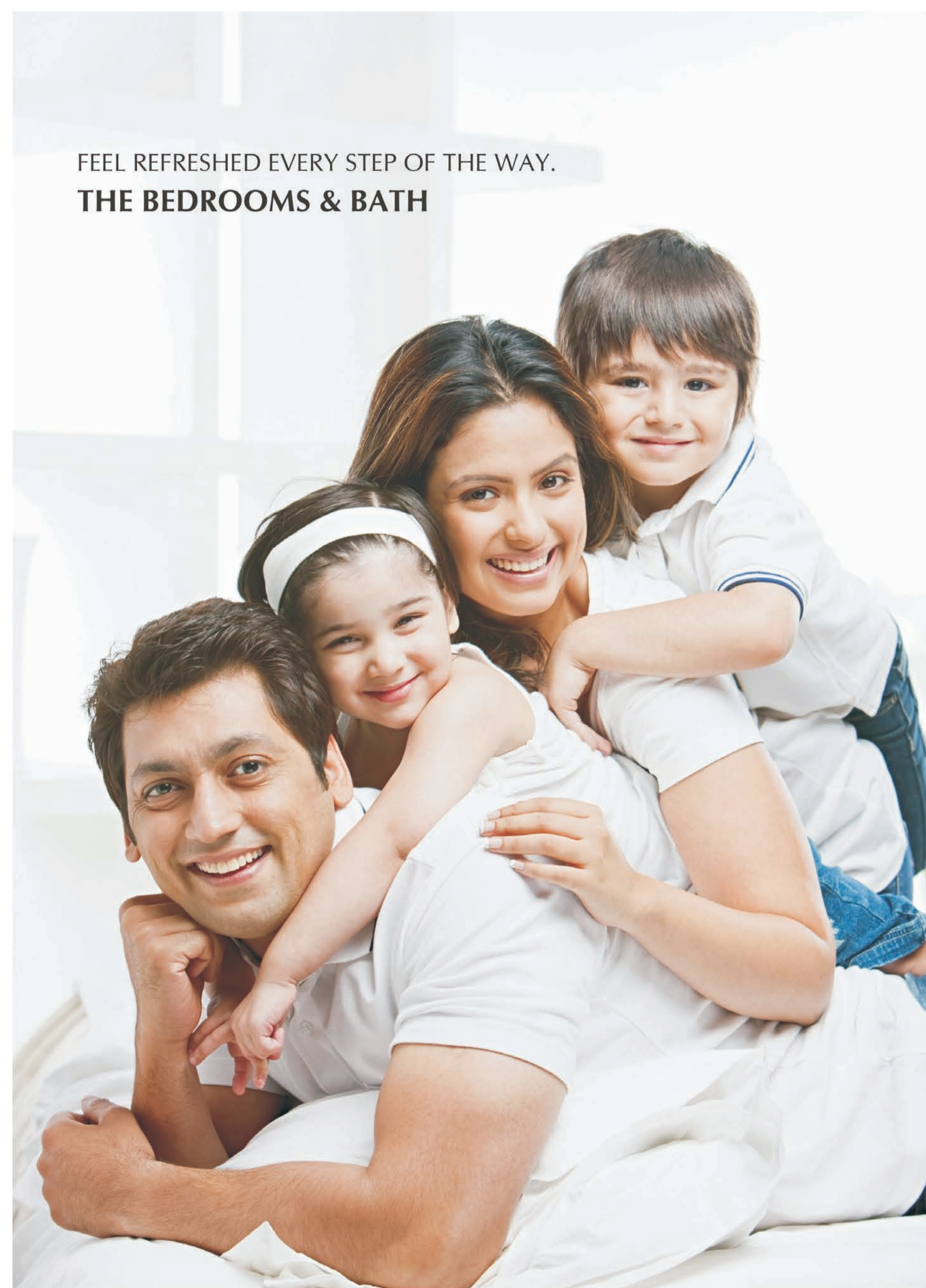
- Modular Kitchen with high-end fittings
- Granite marble counters
- 2 side working counters
- Attached utility balcony
- Stainless steel sink
- Separate access to servant room from the kitchen
- Provision for Geyser

[www.abcbuildcon.in](http://www.abcbuildcon.in) | +91 8470930121





FEEL REFRESHED EVERY STEP OF THE WAY.  
**THE BEDROOMS & BATH**



### UNWIND AND RELAX IN YOUR **BEDROOM**

At Greenburg, the bedrooms have been creatively designed to help you unwind and energize yourself after a day's work. The attached spacious running balcony lets you enjoy the beauty of the setting sun, while filling the room with bracing natural ventilation. Feel supremely comfortable, completely relaxed and cocooned in the luxury of nature.

- Wooden laminated flooring in all bedrooms
- Attached large dresser in the master bedroom
- Space for large wardrobes

[www.abcbuildcon.in](http://www.abcbuildcon.in) | +91 8470930121



## SOAK INTO SURPRISES. THE LUXURIOUS BATHROOMS

At Greenburg you'll never feel cramped for style or space. The large Bathroom looks all the more inviting with its international quality fixtures and anti-slippery flooring. Time to indulge yourself in a luxurious bubble bath and soak away that stress.

- Anti skid ceramic floor tiles
- Four fixture bathroom
- Floor to ceiling wall tiles
- Grohe / Duravit / Roca / Kohler or Equivalent
- Jacuzzi Tub in Bathroom of Master Bedroom\*

\*Jacuzzi tub will be available only in bathrooms of 3 BHK + ST + SQ and 4 BHK + SQ unit master bedrooms.



## PEALS OF DELIGHT IN THE KIDS ROOM

Inspired by the carefree days of childhood - the pride and joy of your life will fall in love with their room. A space inspired by day dreams, covered with shades of fantasy and decked with fun.

- Loft for storage
- Room designed for toddlers to teenagers
- Spacious study

PROPOSED SPECIFICATIONS FOR MICROTEK GREENBURG  
SECTOR 86, GURGAON.

## 2, 3 & 4 BEDROOM APARTMENTS

### LIVING / DINING ROOM

**Walls**  
PLASTIC EMULSION PAINT

**Floors**  
ITALIAN MARBLE

**Doors**  
7.5 FT HARDWOOD DOOR FRAME WITH EUROPEAN STYLE FLUSH DOOR

**Windows**  
POWDER COATED ALUMINIUM / UPVC

**Electrical**  
MODULAR SWITCHES

**USP**  
SPLIT AIR-CONDITIONER

### BED ROOM

**Walls**  
PLASTIC EMULSION PAINT

**Floors**  
LAMINATED WOODEN FLOORING

**Doors**  
7.5 FT HARDWOOD DOOR FRAME WITH EUROPEAN STYLE FLUSH DOOR

**Windows**  
POWDER COATED ALUMINIUM / UPVC

**Electrical**  
MODULAR SWITCHES

**USP**  
SPLIT AIR-CONDITIONER

### KITCHEN

**Walls**  
2 FEET HIGH CERAMIC TILES ABOVE THE COUNTER. REST PAINTED WITH PLASTIC EMULSION PAINT

**Floors**  
ANTI-SKID CERAMIC TILES

**Doors**  
7.5 FT HARDWOOD DOOR FRAME WITH EUROPEAN STYLE FLUSH DOOR

**Windows**  
POWDER COATED ALUMINIUM / UPVC

**Electrical**  
MODULAR SWITCHES

**Sanitary**  
GRANITE / MARBLE COUNTERS. SS SINK WITH CP FITTINGS. PROVISION FOR GEYSER

**USP**  
PREMIUM MODULAR KITCHEN

### BATHROOM

**Walls**  
CERAMIC WALL TILES UP TO FALL CEILING LEVEL

**Floors**  
ANTI-SKID CERAMIC TILES

**Doors**  
7.5 FT HARDWOOD DOOR FRAME WITH EUROPEAN STYLE FLUSH DOOR

**Windows**  
POWDER COATED ALUMINIUM / UPVC

**Electrical**  
MODULAR SWITCHES. PROVISIONS FOR HOT & COLD WATER SUPPLY SYSTEM

**Sanitary**  
GRANITE / MARBLE COUNTERS. SINGLE LEVEL CP FITTINGS- GROHE / DURAVIT / ROCA / KOHLER OR EQUIVALENT

**USP**  
JACUZZI TUB IN MASTER BATHROOM OF 3 BHK + ST + SQ UNITS & 4 BHK + SQ

### SERVANT / UTILITY ROOM

**Walls**  
OBD

**Floors**  
CERAMIC TILES

### SERVANT / UTILITY ROOM (Cont.)

**Doors**  
7.5 FT HARDWOOD DOOR FRAME WITH EUROPEAN STYLE FLUSH DOOR

**Windows**  
POWDER COATED ALUMINIUM / UPVC

**Electrical**  
MODULAR SWITCHES

### SERVANT / UTILITY BATHROOM

**Walls**  
CERAMIC TILES & OBD

**Floors**  
ANTI-SKID CERAMIC TILES

**Doors**  
7.5 FT HARDWOOD DOOR FRAME WITH EUROPEAN STYLE FLUSH DOOR

**Windows**  
POWDER COATED ALUMINIUM / UPVC

**Electrical**  
MODULAR SWITCHES

**Sanitary**  
ISI CP FITTINGS

### BALCONIES

**Walls**  
OBD

**Floors**  
ANTI-SKID CERAMIC TILES

**Electrical**  
MODULAR SWITCHES

**Railing**  
SS WITH TOUGHENED GLASS

### LIFT LOBBIES

**Walls**  
OBD

**Floors**  
GRANITE / INDIAN MARBLE

### EXTERNAL FACADE

**Walls**  
PERMANENT TEXTURE / PAINT FINISHES / COMBINATION

### OTHER FACILITIES

- Single Point Control Panel for Electrical Points at the entrance
- Loft for storage
- Driver Toilets
- Provision for laundry & car washing
- Facility management service
- Dual billing meter

### SECURITY & TECHNOLOGY

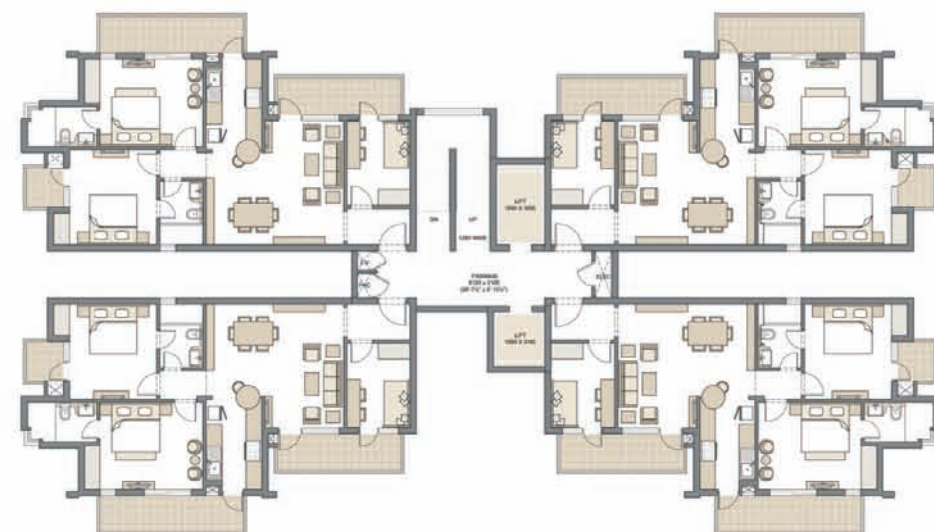
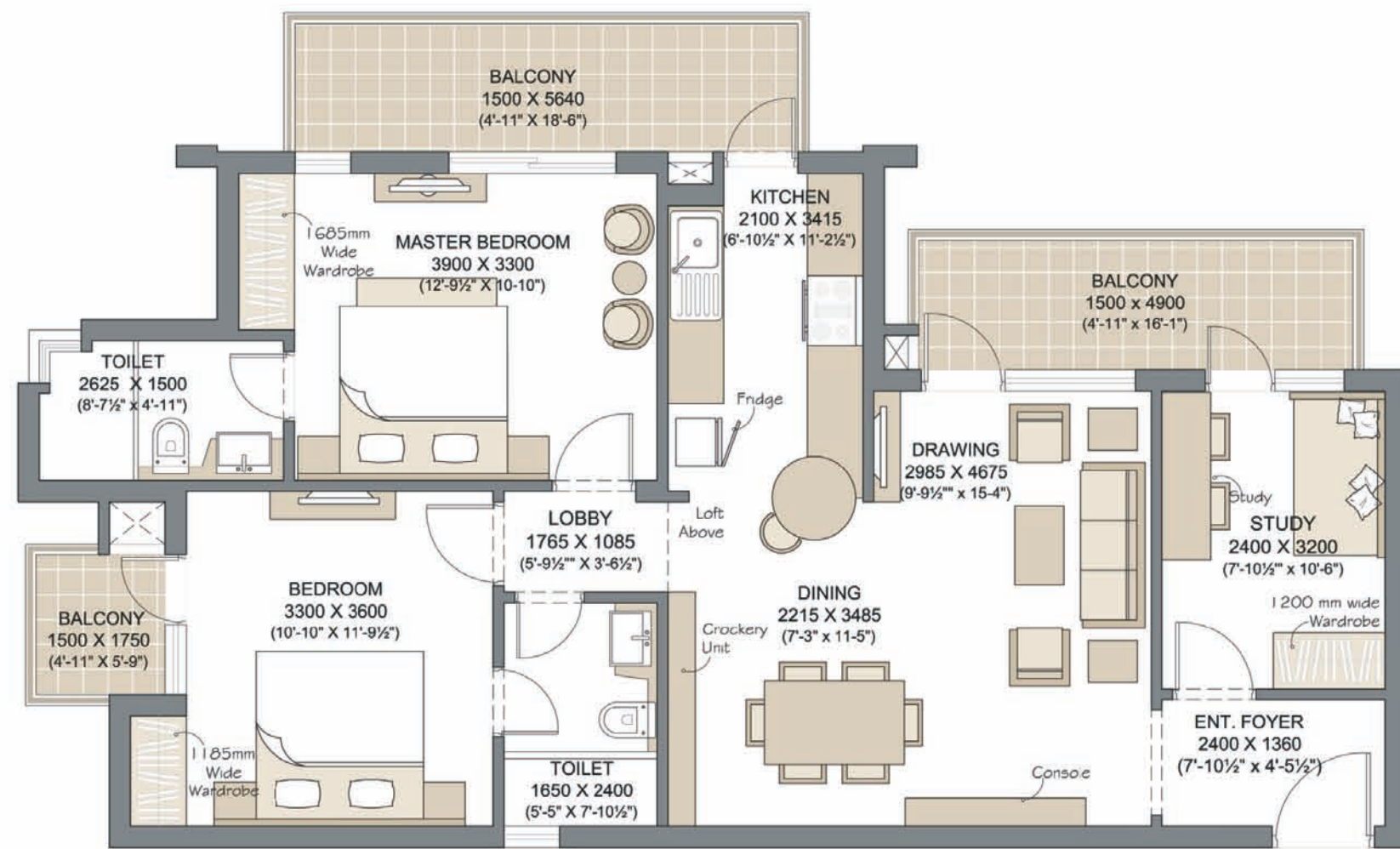
- Introduction of Fibre Optics in your apartment, enabling single point control of multi dimensional utilities. Intelligent wiring. Single centralized hub in line with international standard is provided in each apartment so as to eliminate wire cluttering.
- Power & Flexibility: To select the service provider of your choice for Cable TV/DTH (Direct to Home TV), Internet, Fixed Telephone Line in the apartment.
- IPTV Ready: Infrastructure provided in each apartment in order to raise TV viewing to a whole new exciting world of interactivity and entertainment that is driven through choice, control and value. Watch Videos on Demand & on-demand premium content.
- High Speed Connectivity: Up to 100 Mbps bandwidth available on demand to enjoy swift data download and video streaming.
- 3 Tier Security
- Gated Community
- 24 hour CCTV Surveillance at entry/ exit for continuous monitoring & recording at the Main entrance / Basement / Lift Lobbies.
- Dedicated Intercom linking the residence to both the main gate & the lobby

## 2 BHK + STUDY

Floor Plan Of A Single Unit & The Cluster Plan

## 2 BHK + STUDY

The 3D View

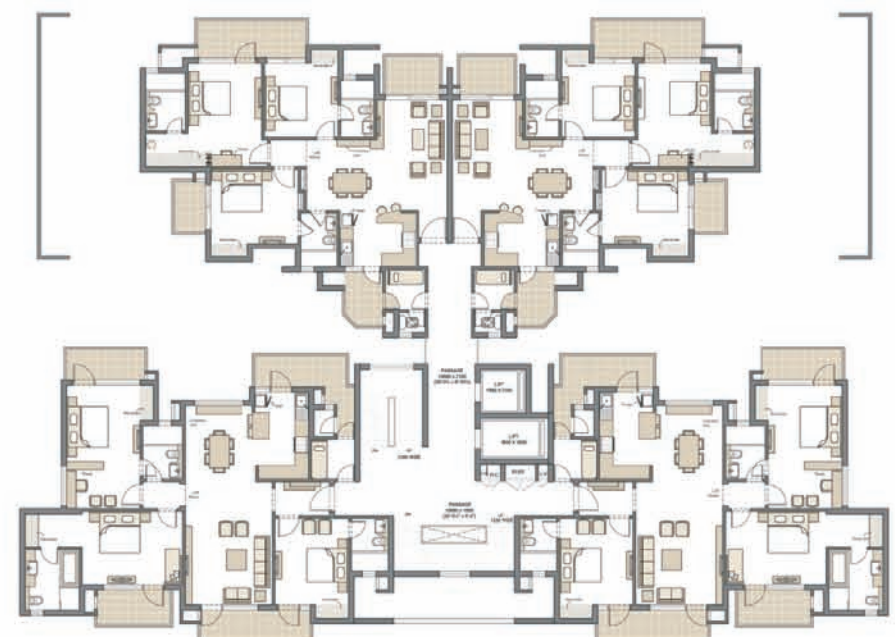
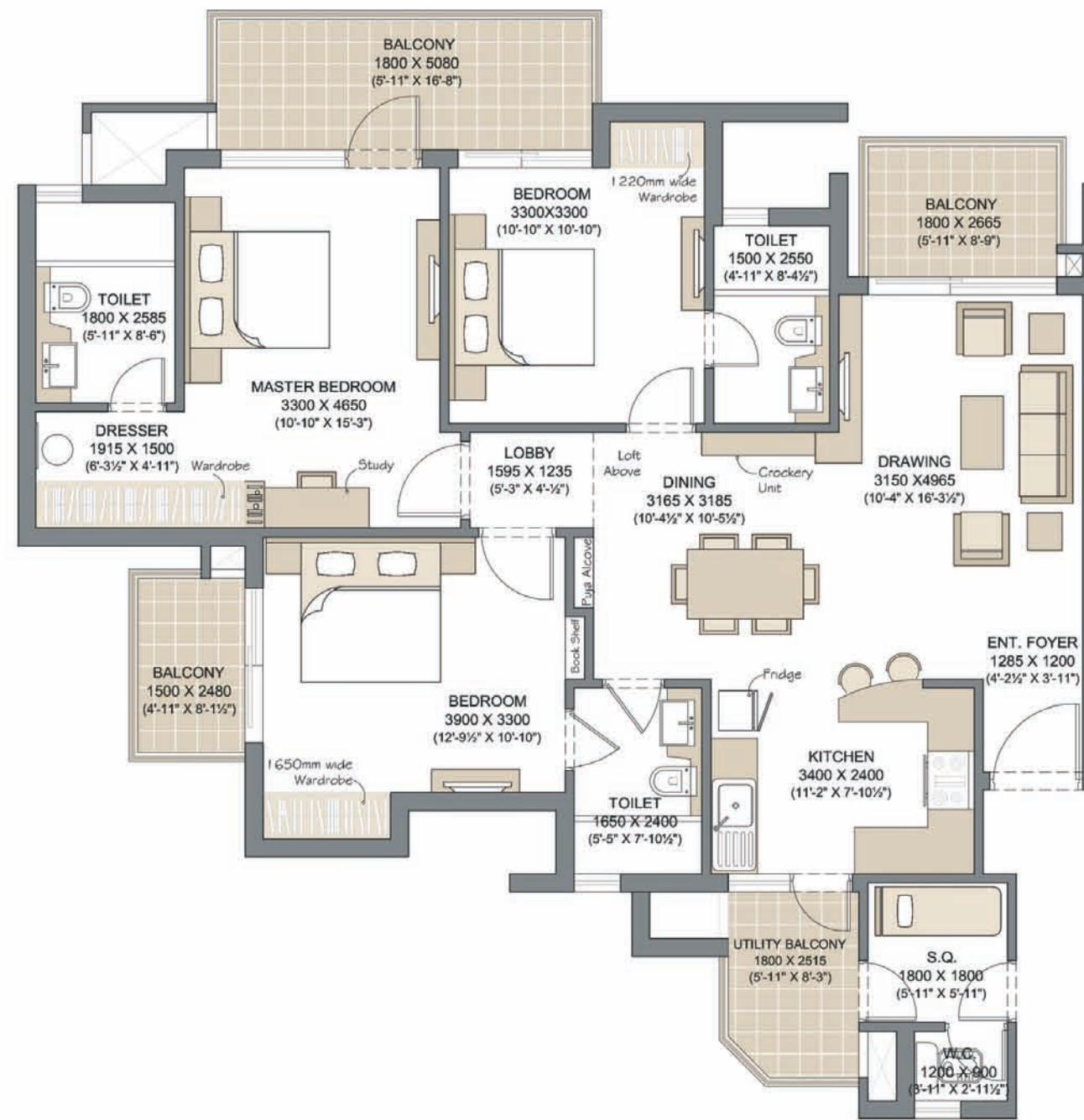


TOWER G, H, I, J  
UNIT NO. 1, 2, 3 & 4

SALE AREA : 1480 SQ.FT.  
(137.49 SQ.MT.)

**3 BHK + SQ**

Floor Plan Of A Single Unit & The Cluster Plan



TOWER C, D, E, F, K, L  
UNIT NO. 2 & 3

**3 BHK + SQ**

The 3D View

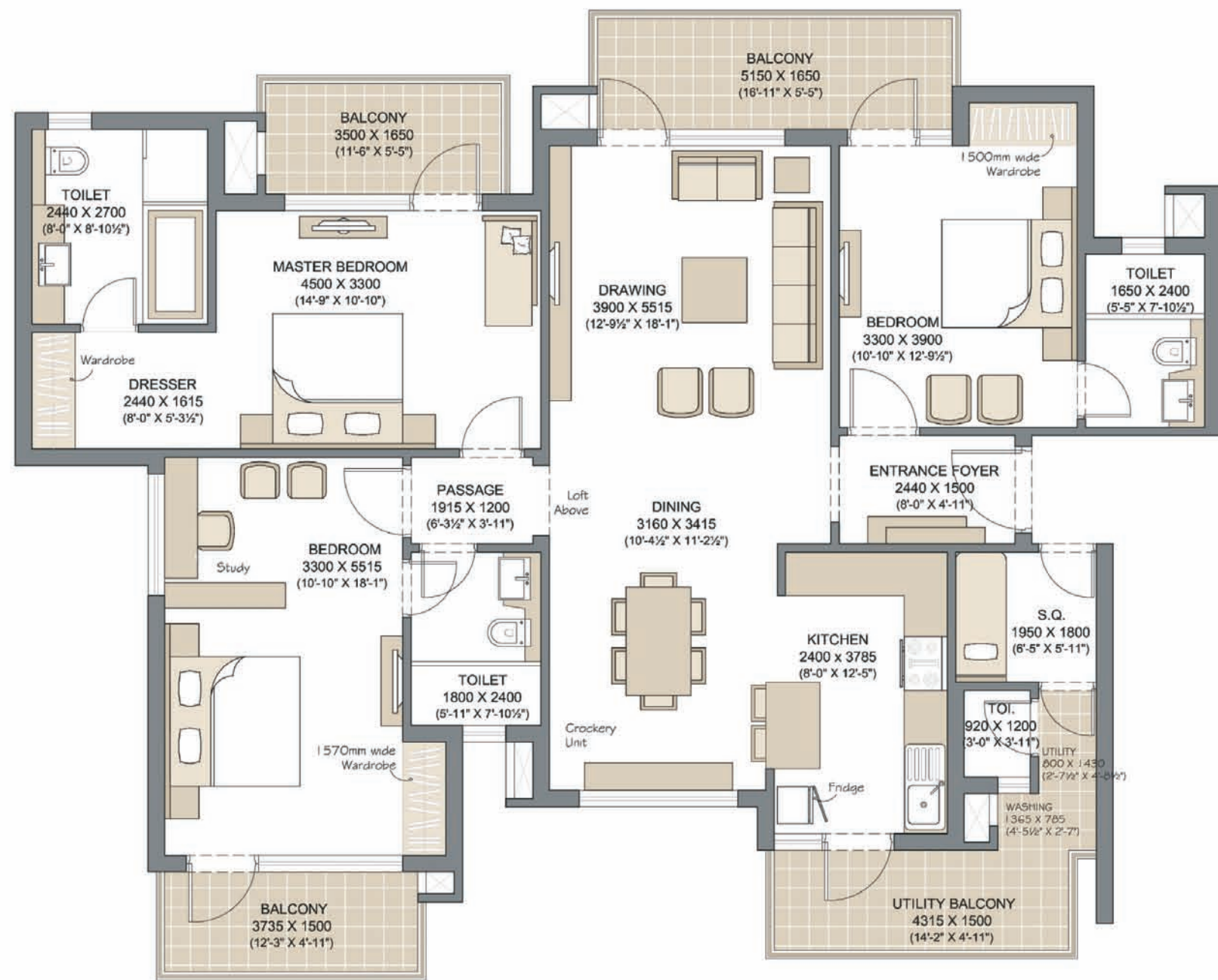


SALE AREA : 1895 SQ.FT.  
(176.04 SQ.MT.)

The floor plan shown above are indicative and subject to changes as decided by the competent authority. Furniture and accessories indicated in the design are not part of the offering.

**3 BHK + SQ + STUDY**

Floor Plan Of A Single Unit & The Cluster Plan

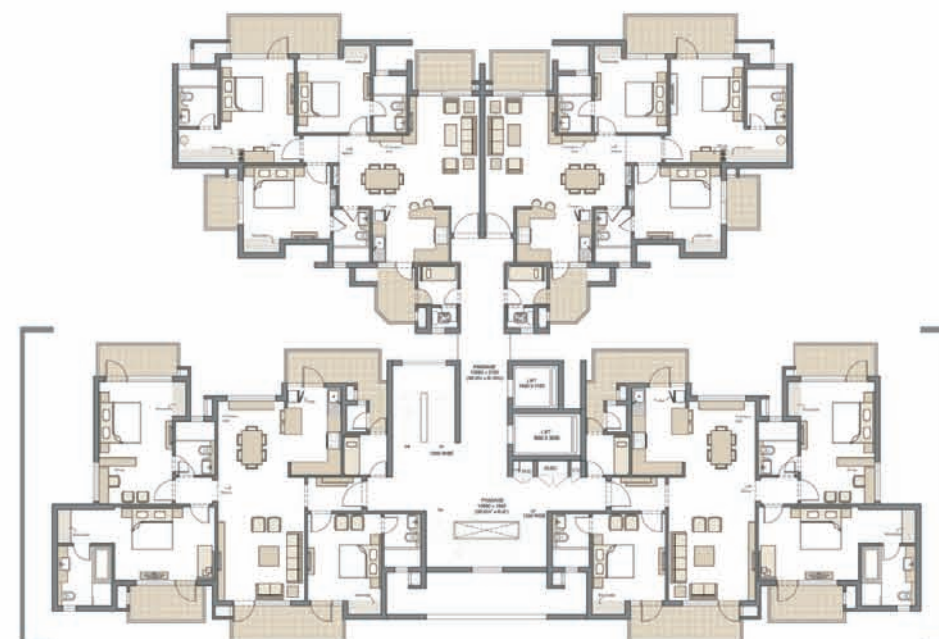


**3 BHK + SQ + STUDY**

The 3D View



TOWER C, D, E, F, K, L  
UNIT NO. 1 & 4



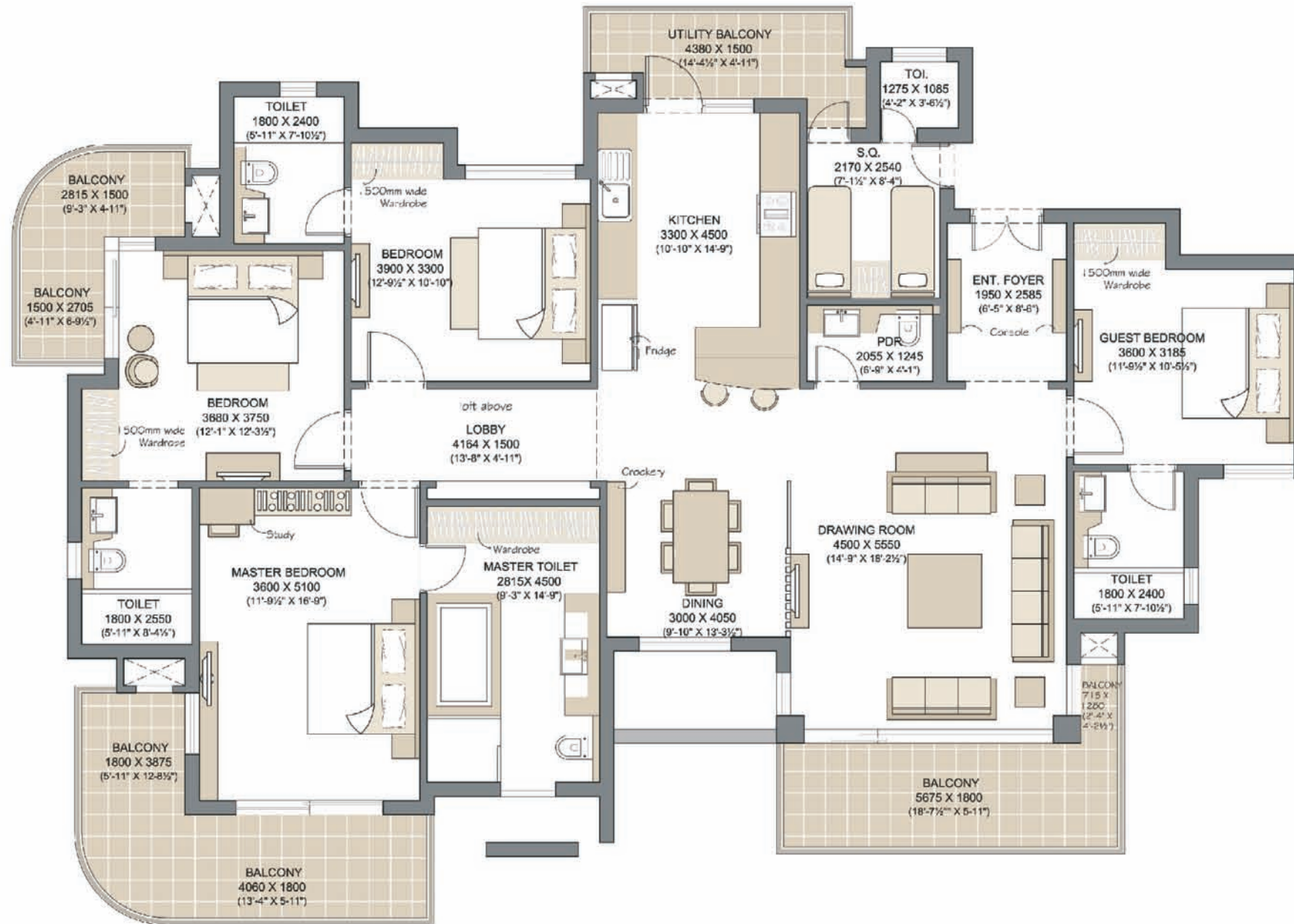
SALE AREA : 2285 SQ.FT.  
(212.28 SQ.MT.)

**4 BHK + SQ**

Floor Plan Of A Single Unit & The Cluster Plan

**4 BHK + SQ**

The 3D View



TOWER A & B  
UNIT NO. 1 & 2



SALE AREA : 3005 SQ.FT.  
(279.17 SQ.MT.)

## THE SACRED PLEDGE OF ON TIME DELIVERY



A promise once made should be kept no matter what. And Microtek Infrastructures for its current project has tied up with Larsen & Toubro (L&T), India's most respected technology, engineering, construction and manufacturing company in the private sector in order to utilize their expertise in the field of design and construction. Not only does Microtek Infrastructures in an active partnership with L&T assure you of an impeccably designed project; we will also ensure that the date committed for welcoming you to your new home, will not be extended by even a single day. We won't make you wait-it's a vow we shall not break!

## CONSTRUCTION HIGHLIGHTS

- Construction by Larsen & Toubro
- Flat slab construction
- Use of Mivan shuttering (3S system of construction - Speed, Strength & Safety)
- External/Periphery walls of RCC
- More Seismic/ Earthquake Resistant Structure
- Monolithic construction of walls, columns, beams & slabs
- Lesser number of joints and reduced leakages
- Parapet walls of RCC for safety purpose
- Construction of Helipad



## BUILDING THE PRESENT. INVESTING IN THE FUTURE!

Microtek Infrastructures Pvt. Ltd. has been at the forefront of ushering quantum leaps in the use of futuristic technologies in real estate. Inspired by the momentous achievements of the parent companies, we commit to deliver engineering and architectural ingenuity and in designing spaces of quality and marquee.

We foresee a future with extraordinary residential, commercial and infrastructural real estate ventures, incomparable in vision and peerless in value. Our aim in very simple terms is to develop long-term relationships by delighting our customers at every touch-point, not just with our superior quality products but also with our top-notch, hassle free services.

## PLAYING SECOND FIDDLE IS NOT AN OPTION

For Microtek Infrastructures, ambition is inherited from both the Action Group and Okaya Group. Added to that is the vision of creating the finest known structures ever seen and a footprint that spans far and wide. That's the force that is propelling Microtek Infrastructures to scale the heights with a one single point of focus-to be at the top, within this decade.

## UPCOMING PROJECTS

### Group Housing:

- Sector 103, Gurgaon
- Sector 41, Sonapat, Haryana
- Sector 3A, Bahadurgarh, Haryana

### Hospitality:

- Sector 103, Gurgaon
- Sector 111, Gurgaon

### Commercial:

- Sector 104, Gurgaon
- Sector 81, Gurgaon
- Sector 95A, Gurgaon

### IT Infrastructure:

- Rajiv Gandhi IT Park, Chandigarh
- Blue Silicon, Noida



www.microtekinfra.com

Microtek Infrastructures (P) Ltd.

Corp. Office: Vatika City Point, 3rd Floor, M.G. Road, Gurgaon - 122002. Tel.: +91-124-4417800. Fax.: +91-124-4417810

Disclaimer: All information and contained herein, including but not limited to all designs, layouts, specifications, plans, services, facilities and infrastructure are illustrative and subject to change, without notice, as per prevailing government norms. The fixtures and furnishing shown are representative and do not form part of the Apartment. This brochure is purely conceptual and not a legal offering. Club usage shall be subject to membership condition.

Licence No. 104 of 2010 and Approved Building plan No. ZP-705/ID(BS)/2012/3484 Dated 29.02.2012

www.abcbuildcon.in | +91 8470930121