



primrose
floors
EXCLUSIVE FLOORS BY VATIKA

“PRIMROSE FLOORS”
At
Vatika India Next, Gurgaon

www.abcbuildcon.in | +91 8470930121

INDICATIVE DEVELOPMENT CONCEPT

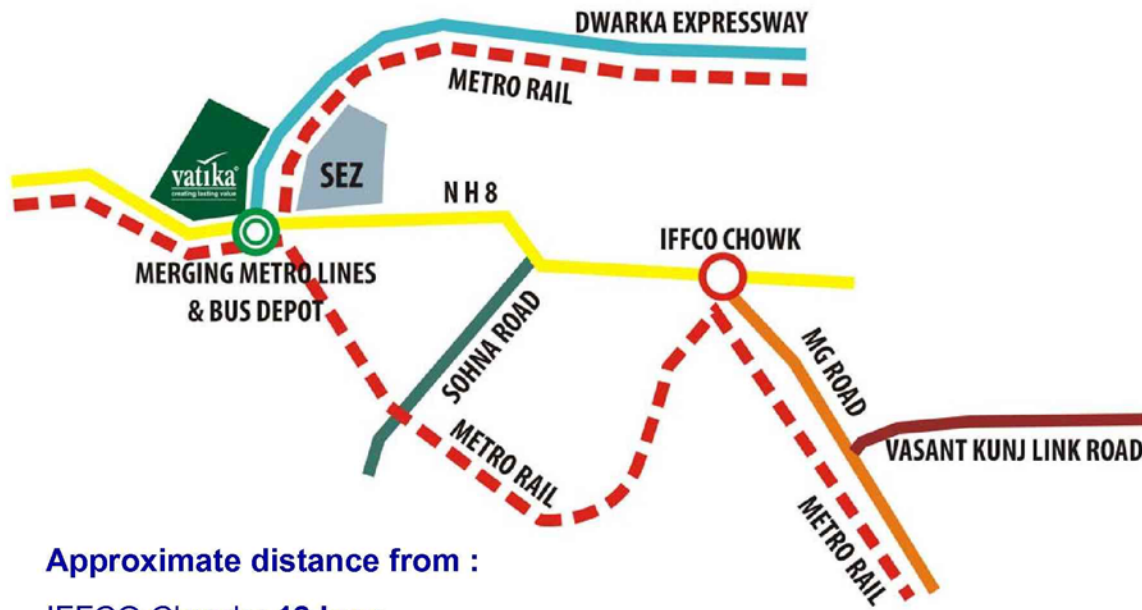


primrose
floors
EXCLUSIVE FLOORS BY VATIKA



**Urban Woods, independent floors on 360 sq.yrds at Vatika Infotech City, Jaipur .*

FUTURE next



Approximate distance from :

- IFFCO Chowk : **12 kms**
- International Airport : **25 kms**
- Rajiv Chowk : **6 kms**
- Haldiram's : **1 km**
- Vatika Triangle : **13 kms**
- Vatika City, Sohna Road : **10 kms**
- DLF Phase 1 : **14 kms**

India Next will be life beyond your imagination, where living will be more comfortable and approachable due to its strategic location and world class infrastructure.

A mega "Future Ready" integrated township project. Strategically located on the intersection of two 8 lane expressway's - the NH8, and the new proposed one connecting to North West Delhi Walking distance from proposed metro hub at the intersection of South Delhi- Gurgaon metro line and the Dwarka metro line Proposed ISBT project coming up in close vicinity. Spread through the prime sectors 82, 82A, 83, 84, 85.

www.abcbuildcon.in | +91 8470930121

A mega
"Future Ready"
integrated township project



**Master Plan
Vatika India Next, Gurgaon**



**Site for PRIMROSE Floors,
Sector 82,
Vatika India Next**

primrose
floors

EXCLUSIVE FLOORS BY VATIKA

FUTURE **next** 

**“PRIMROSE FLOORS”
At
Vatika India Next**

primrose
floors

www.abcbuildcon.in | +91 8470930121

EXCLUSIVE FLOORS BY VATIKA

A mega
“Future Ready”
integrated township project

FUTURE next

THE CONCEPT

Low rise row-housing.

Ground + 2 Structure on 240 Sq.yds plot.

Ground floor gets individual front & back garden with covered verandas.

1st & 2nd floor gets large balconies & terraces.

Reserved parking slot for each floor.

Provision for power backup (Inverter wiring for all electric/power points to be done by the developers).

www.abcbuildcon.in | +91 8470930121

primrose
floors

EXCLUSIVE FLOORS BY VATIKA

A mega
"Future Ready"
integrated township project

FUTURE **next**

Floor Plans & Specifications

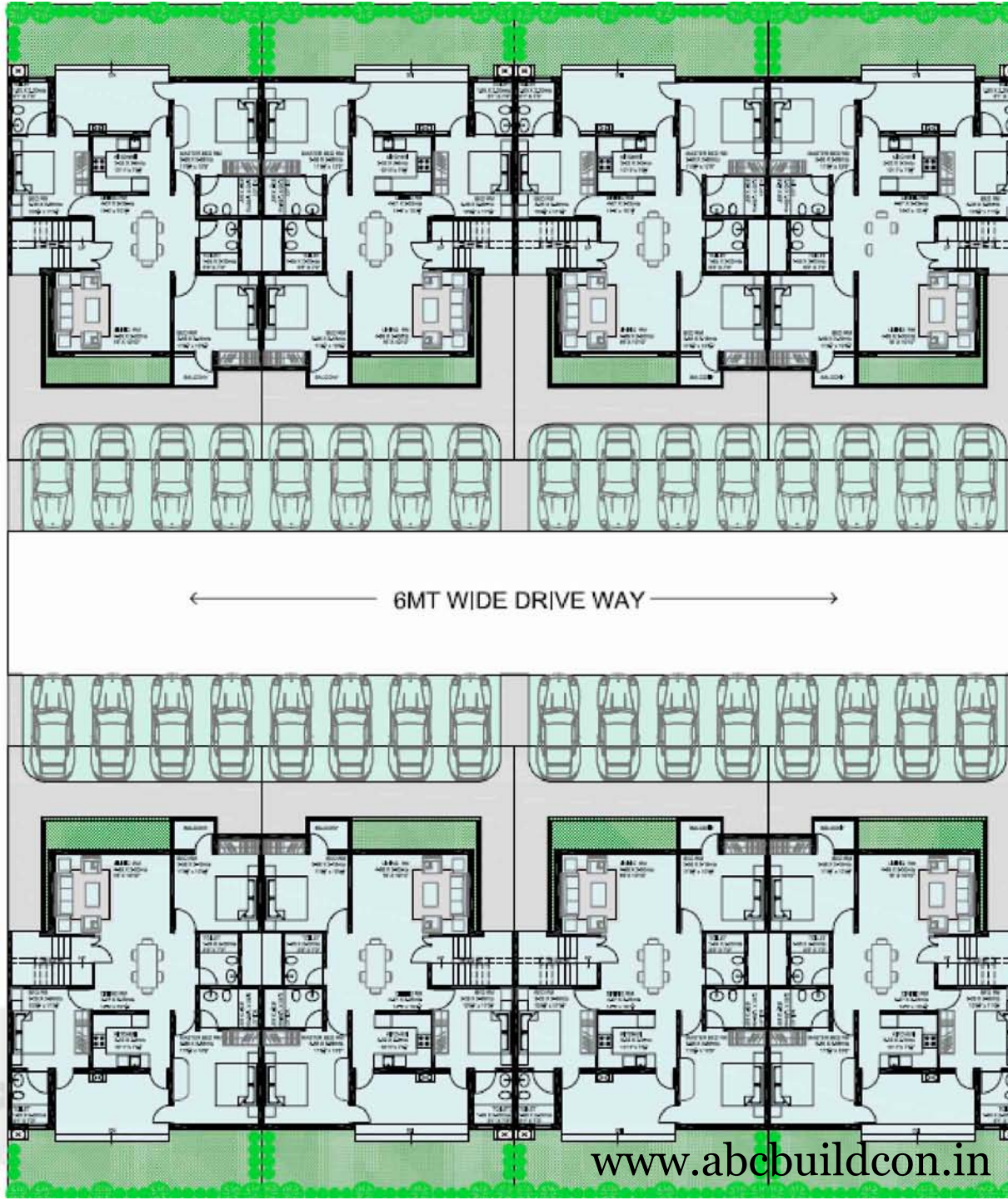
www.abcbuildcon.in | +91 8470930121

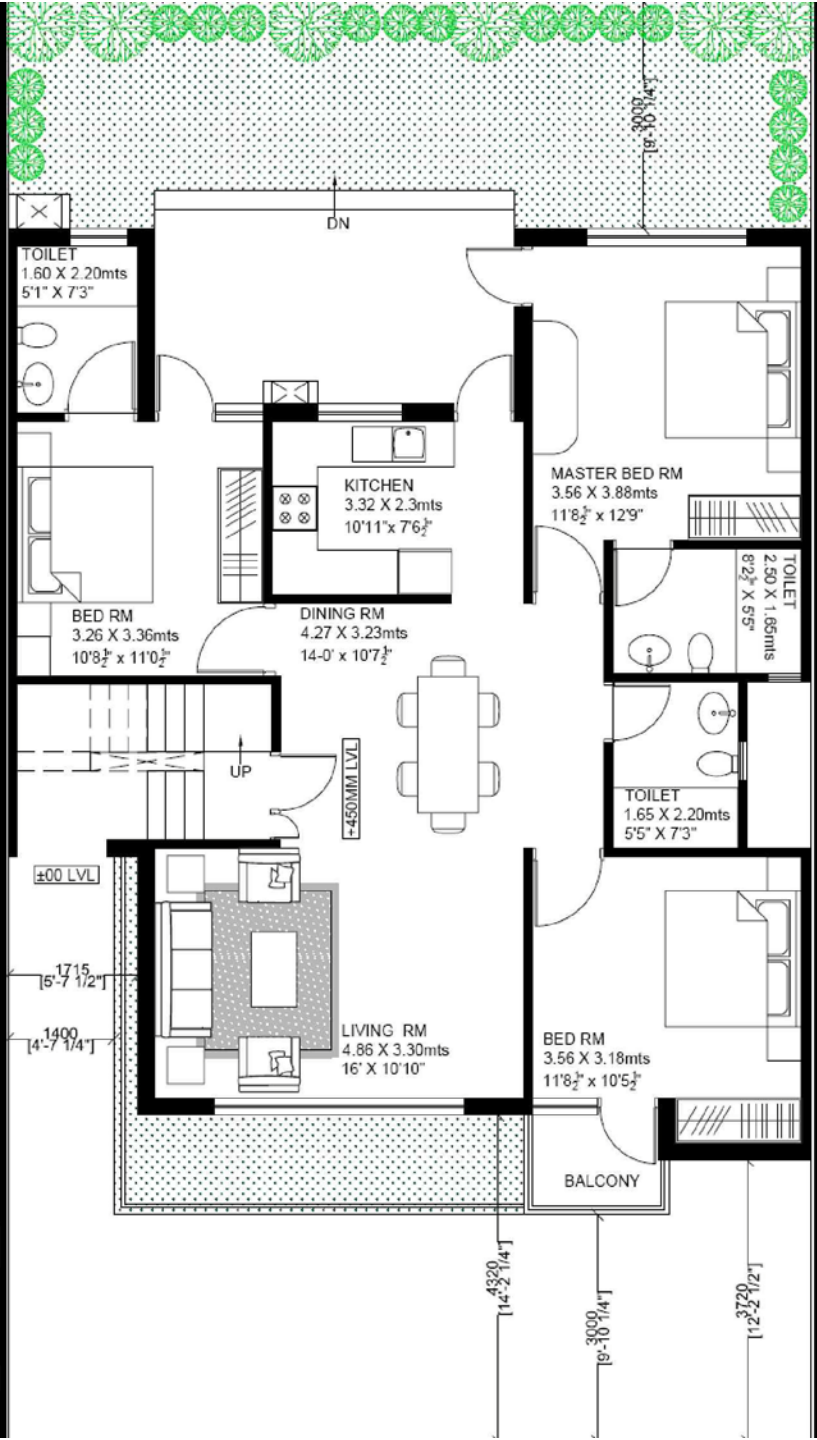
primrose
floors

EXCLUSIVE FLOORS BY VATIKA

A mega
"Future Ready"
integrated township project

Primrose Floors - Elevation



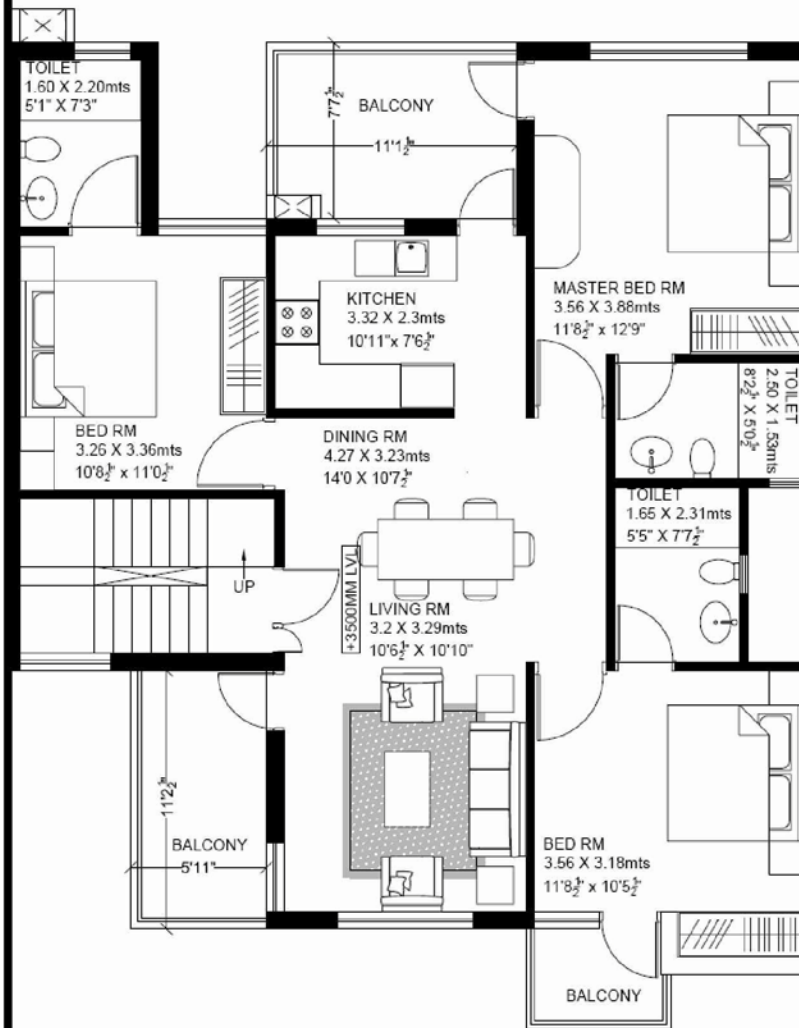


Ground Floor Plan

Built-Up Area : 1156.21 sq.ft.
Equivalent Super Area : 1616.61 sq.ft.



First Floor Plan

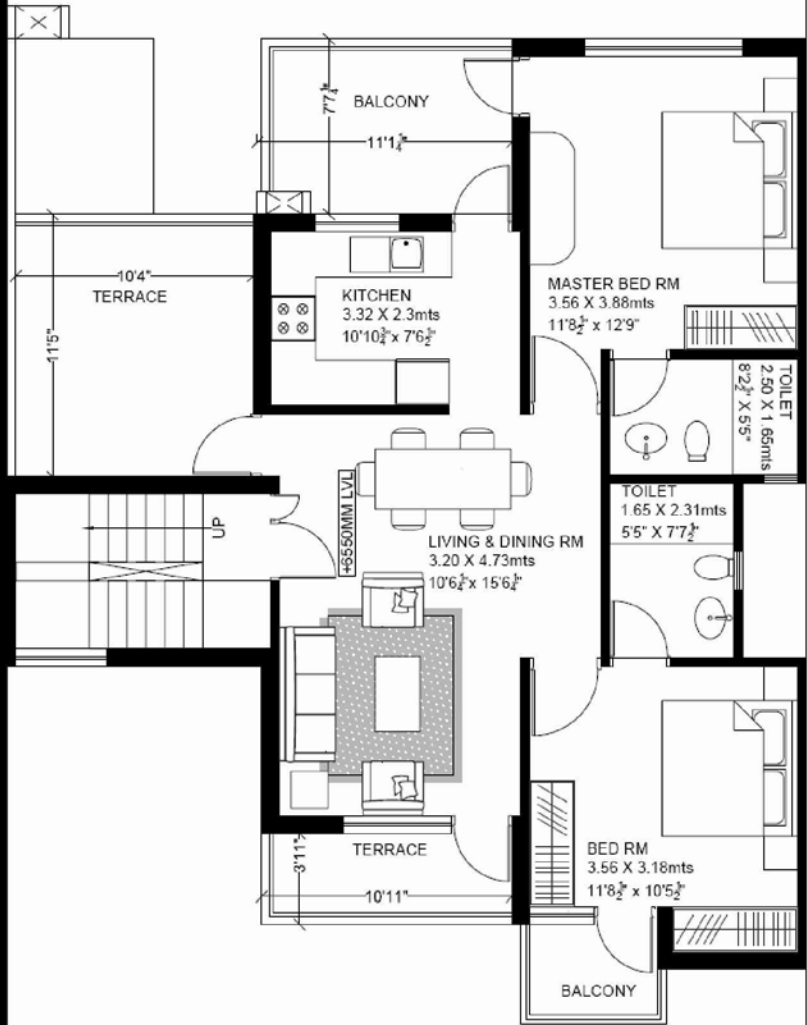


Built-Up Area : 1094.21 sq.ft

Equivalent Super Area : 1533.95 sq.ft.

primrose
floors
EXCLUSIVE FLOORS BY VATIKA

Second Floor Plan



Built-Up Area : 881.41 sq.ft

Equivalent Super Area : 1225.21 sq.ft.



FUTURE **next**

Basic Sale Prices

PRIMROSE Floors (240 Sq. Yard.)			
Unit Type	Floor	Built-up Area	Price
3BHK	Ground Floor	1156.21 Sq. Ft.	37,23,161/-
3BHK	First Floor	1094.21 Sq. Ft.	32,02,382/-
2BHK	Second Floor	881.41 Sq. Ft.	26,36,181/-

- Unit sizes may vary +/-10%
- The prices can be revised any time on the sole discretion of the management.
- The above cost is inclusive of one dedicated surface car parking, EDC/IDC (Existing).

www.abcbuildcon.in | +91 8470930121

primrose
floors

EXCLUSIVE FLOORS BY VATIKA

A mega
"Future Ready"
integrated township project

FUTURE next

Specifications

Living / Dining / Bedrooms: Vitrified tiles flooring, OBD.

Toilets: Anti-skid ceramic tiles, Branded sanitary fittings and fixtures, Pattern glazed tiles on walls.

Kitchen: Granite counter, stainless steel sink, ceramic tiles on the wall over counter.

Electrical: Complete electrical wiring with branded sockets & switches.

Doors & Windows: Flush doors with wooden frame, Window panes with glazed aluminum/ durable wood.

Provision for Inverter : Inverter wiring for all electric/power points to be done by the developer.

primrose
floors

EXCLUSIVE FLOORS BY VATIKA

www.abcbuildcon.in | +91 8470930121

A mega
"Future Ready"
integrated township project

FUTURE next

Payment Plan

At the time of Booking (To be completed in 30 days)	10%
Within 60 days or Allotment (whichever is later)	10%
Within 60 days from Allotment or Commencement of Earthwork at site (whichever is later) (This installment and all subsequent installments can be availed through Home Loan)	15%
On completion of Foundation	10%
On casting of Ground Floor Roof Slab	15%
On completion of Super Structure	15%
On completion of Brickwork with Plaster	10%
On completion of Flooring Work	10%
On offer of Possession	5% + IFMS + Stamp Duty & Registration Charges

emilia
 floors

EXCLUSIVE FLOORS BY VATIKA

www.abcbuildcon.in | +91 8470930121

A mega
"Future Ready"
integrated township project

FUTURE next

Down Payment Plan (10% discount on Basic Sale Price)

At the time of Booking (to be completed in 30 days)	10%
Within 60 days or Allotment (whichever is later)	80%
On offer of Possession	10% + IFMS + Stamp Duty & Registration Charges

Other Charges:

PLC for Corner or Park Facing: Rs. 1,92,000/-

IFMS (interest free maintenance security): Rs. 50 per sq. ft. (To be paid to the maintenance agency at the time of possession).

www.abcbuildcon.in | +91 8470930121

primrose
floors

EXCLUSIVE FLOORS BY VATIKA

A mega
"Future Ready"
integrated township project

Thank you

www.abcbuildcon.in | +91 8470930121

primrose
floors

EXCLUSIVE FLOORS BY VATIKA

A mega
"Future Ready"
integrated township project