



+918470930121 | www.abcbuildeon.in



+918470930121 | www.abcbuildcon.in

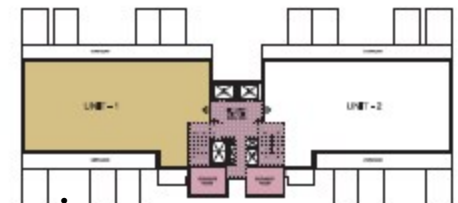
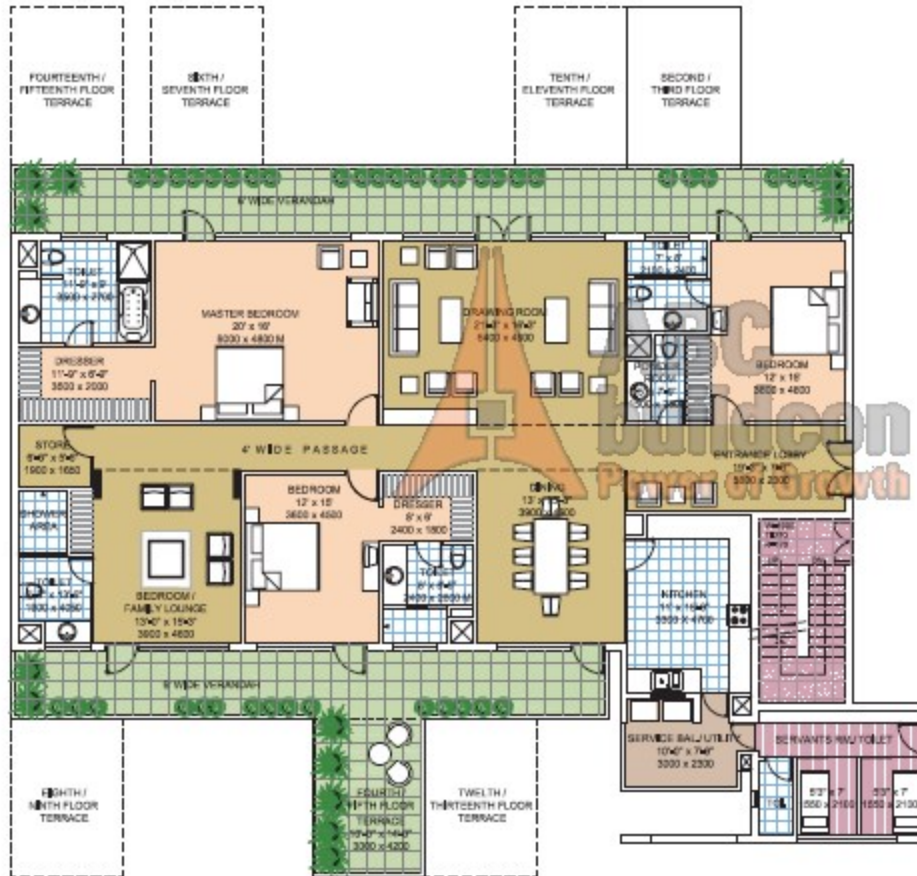
THE VERANDAS



THE SITEPLAN



Layout Plan | Four bedroom Unit
Typical Layout Plan

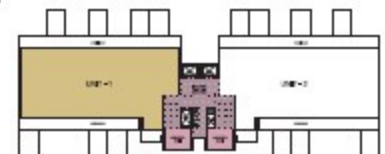
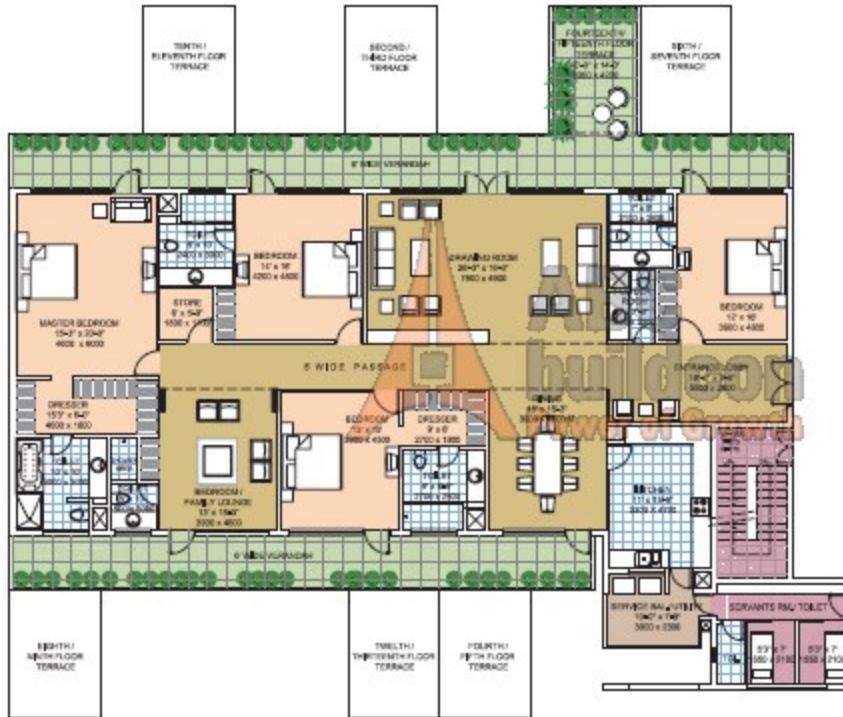


Saleable area: 4,495 sq. ft.

+918470930121 | www.abcbuildcon.in



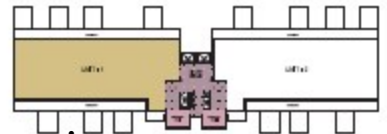
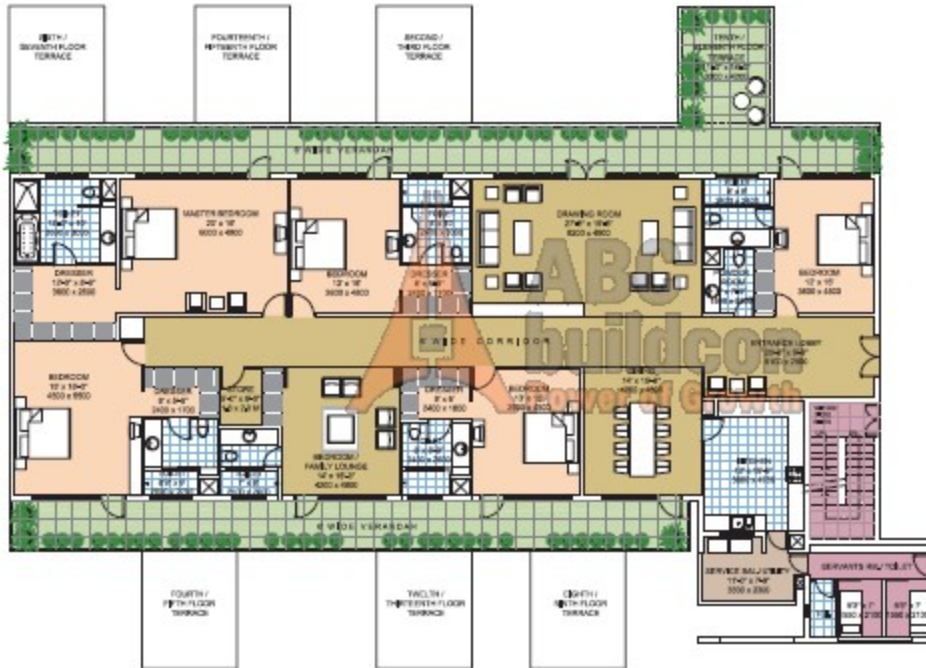
Layout Plan | Five bedroom Unit
Typical Layout Plan



Saleable area: 5,330 sq. ft.

+918470930121 | www.abcbuildcon.in

Layout Plan | Six bedroom Unit
Typical Layout Plan



Payment Plan

Basic Sale Price	As applicable
At the time of booking	30% of BSP (Earnest money)
Within 45 days	65% of BSP + PLC + Club membership
At the time of offer for possession	5% of BSP + Registration Charges + IFMS

ADDITIONAL CHARGES

Details	Amount
IFMS	Rs. 125/- per Sq. Ft.
Club Membership	Rs. 5,00,000/-
Preferential Location Charges (PLC)	As below
Penthouse	10% of BSP
Ground Floor	7.5% of BSP
First, Second & below Penthouse Floors	5% of BSP

Notes

1. The Above price is inclusive of External Development charges (EDC), pro-rated per apartment as applicable to this Group House Site as levied by the Government of Haryana up to the date of issue of licences, originally paid by the Company. In case of any upward revision thereof by the Govt. agencies in future, the same would be recovered on pro-rata basis.
2. Prices are Escalation Free but subject to revision/withdrawal without notice at Company's sole discretion. No Extra Charges will be leviable, except due to change, if any, on account of Fire safety norms or upward revision of EDC (note 1) by the Govt. of Haryana from time to time and/or on revision/change in area.
3. Stamp Duty and Registration Charges shall be payable along with the last installment, based on the prevailing rates.
4. Terms and Conditions stated herein are merely indicative with a view to acquaint the applicant and are not exhaustive. For detailed Terms and Conditions please refer to allotment Letter and Apartment Buyer's Agreement.



+918470930121 | www.abcbuildcon.in