

DLF  
BELVEDERE  
PLACE

Luxury homes  
that don't cost the earth.  
MAKE SURE YOU GET YOURS TODAY

DLF Belvedere Place



+918470930121 | [www.abcbuildcon.in](http://www.abcbuildcon.in)

*Every once in a little while, there comes a home option that is a little extra special, a little out of the ordinary. Every home option in DLF Belvedere Park is just*

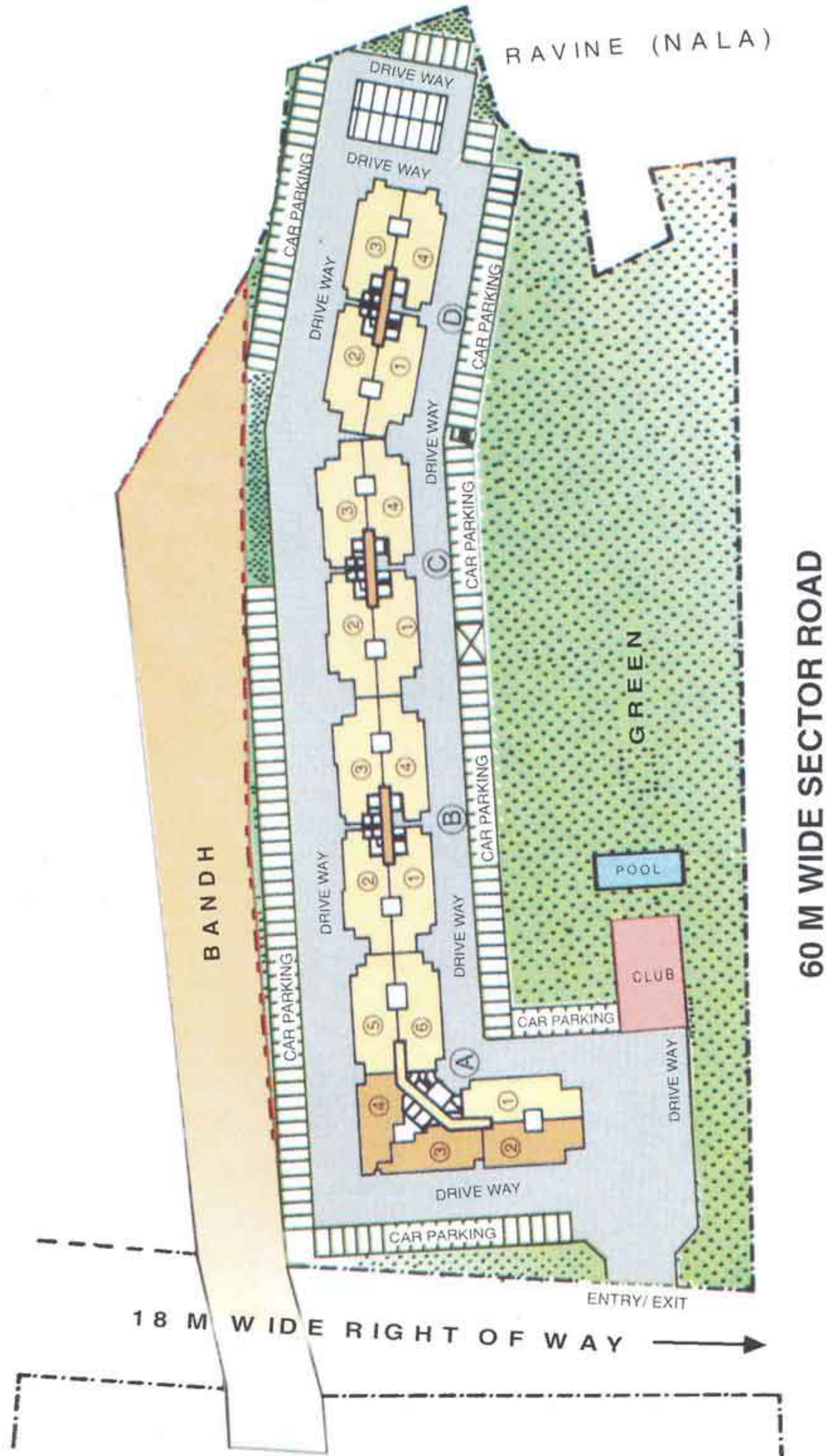


*that. For very solid reasons:*

- An integral part of the exclusive 85-acre Belvedere Place apartment complex
- Well-located - in DLF City, Phases II & III, that have always been considered extra prime
- An integral part of DLF City, with a comprehensive infrastructure of educational, medical and commercial facilities that are already operational
- Club with swimming pool and gymnasium
- Designed by the renowned architectural firm, Architect Hafeez Contractor
- Efficient space planning in each apartment
- Optimal specifications; no unnecessary frills that add more cost than value
- Power back-up for your luxury home upto 6.25 KVA per apartment
- Lower maintenance costs due to more thoughtful use of flooring materials

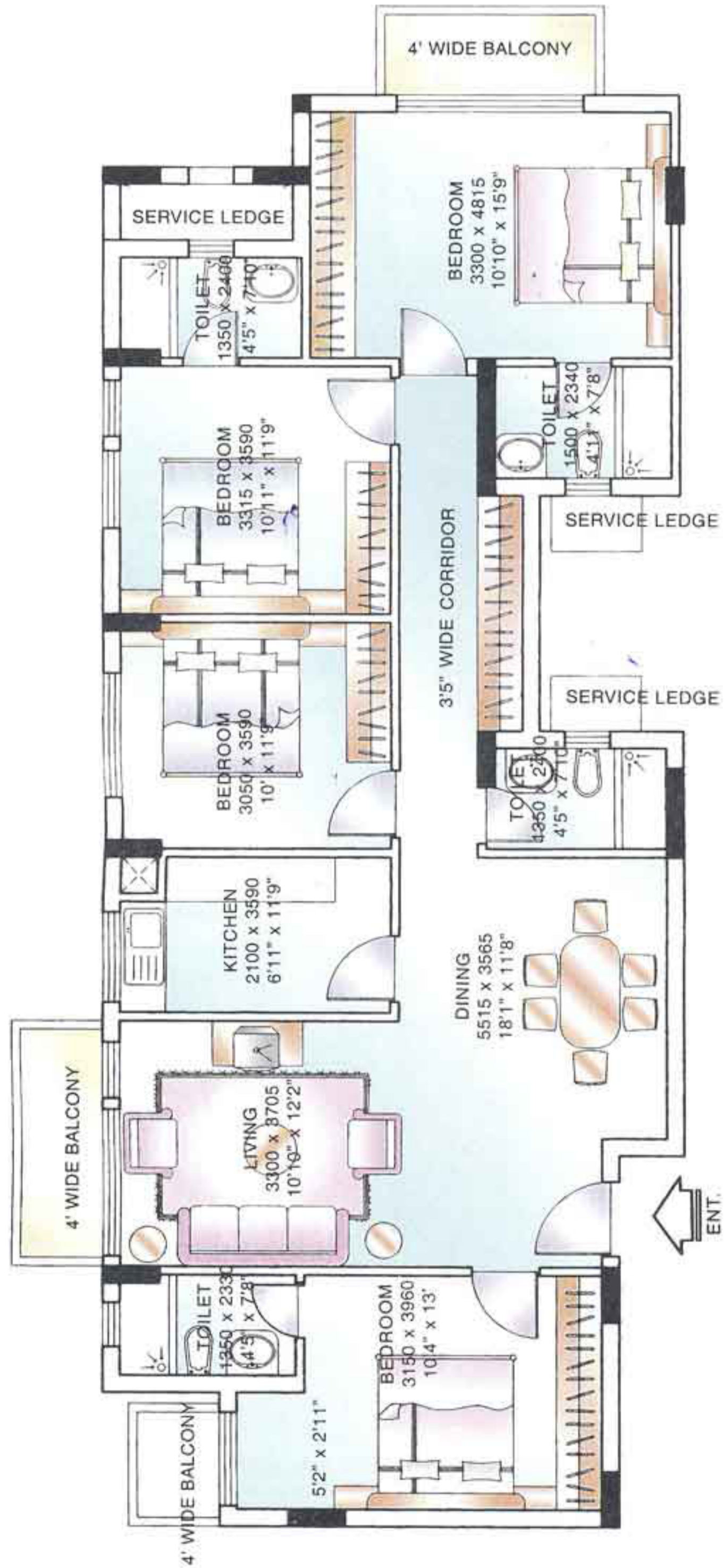


**SITE LAYOUT**

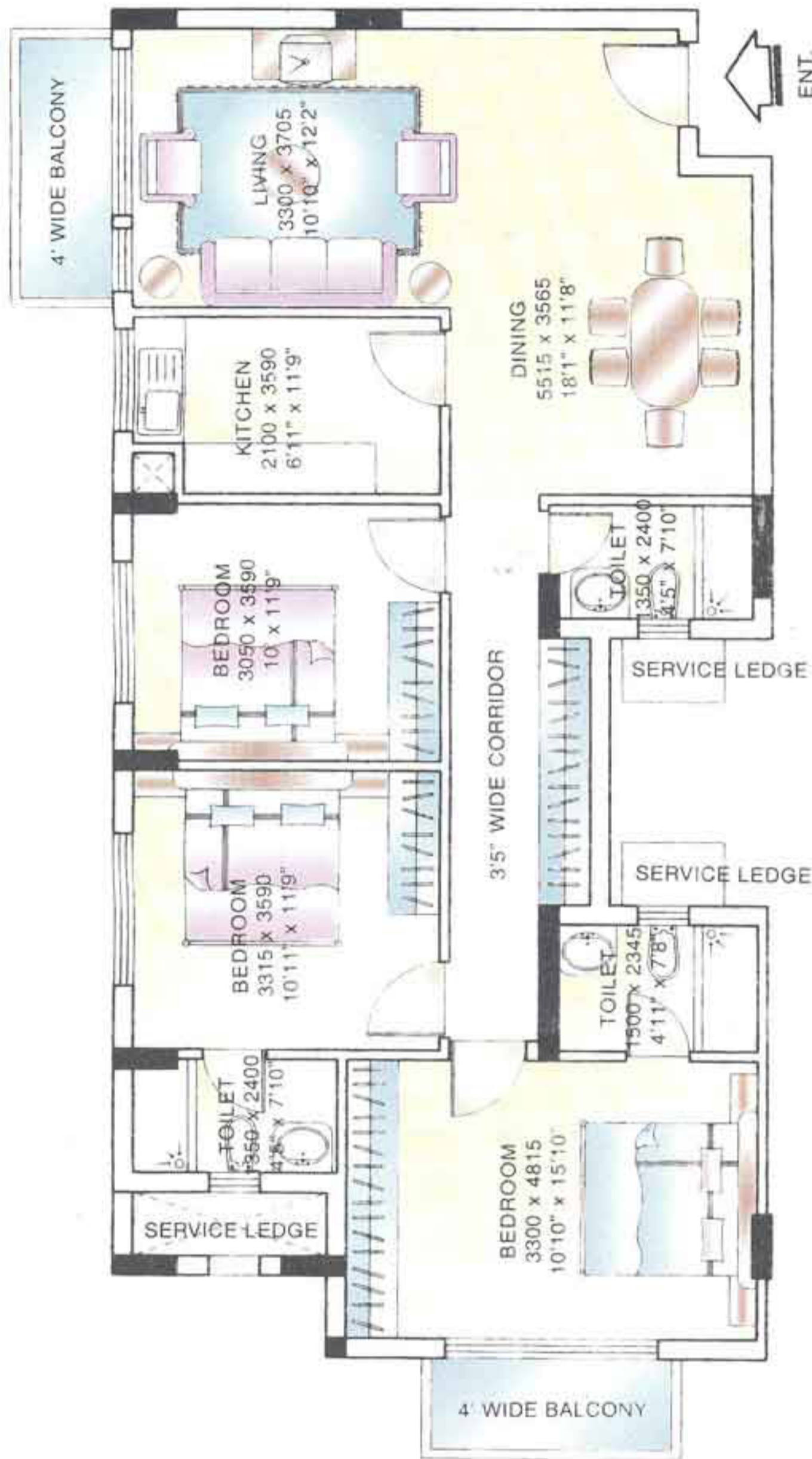


**FLOOR PLAN**

**Unit - 1**  
**Block - A**  
**Area - 1718 sq.ft.**  
**Accommodation**  
**4 Bedroom,**  
**Living - Dining,**  
**3 Balconies**



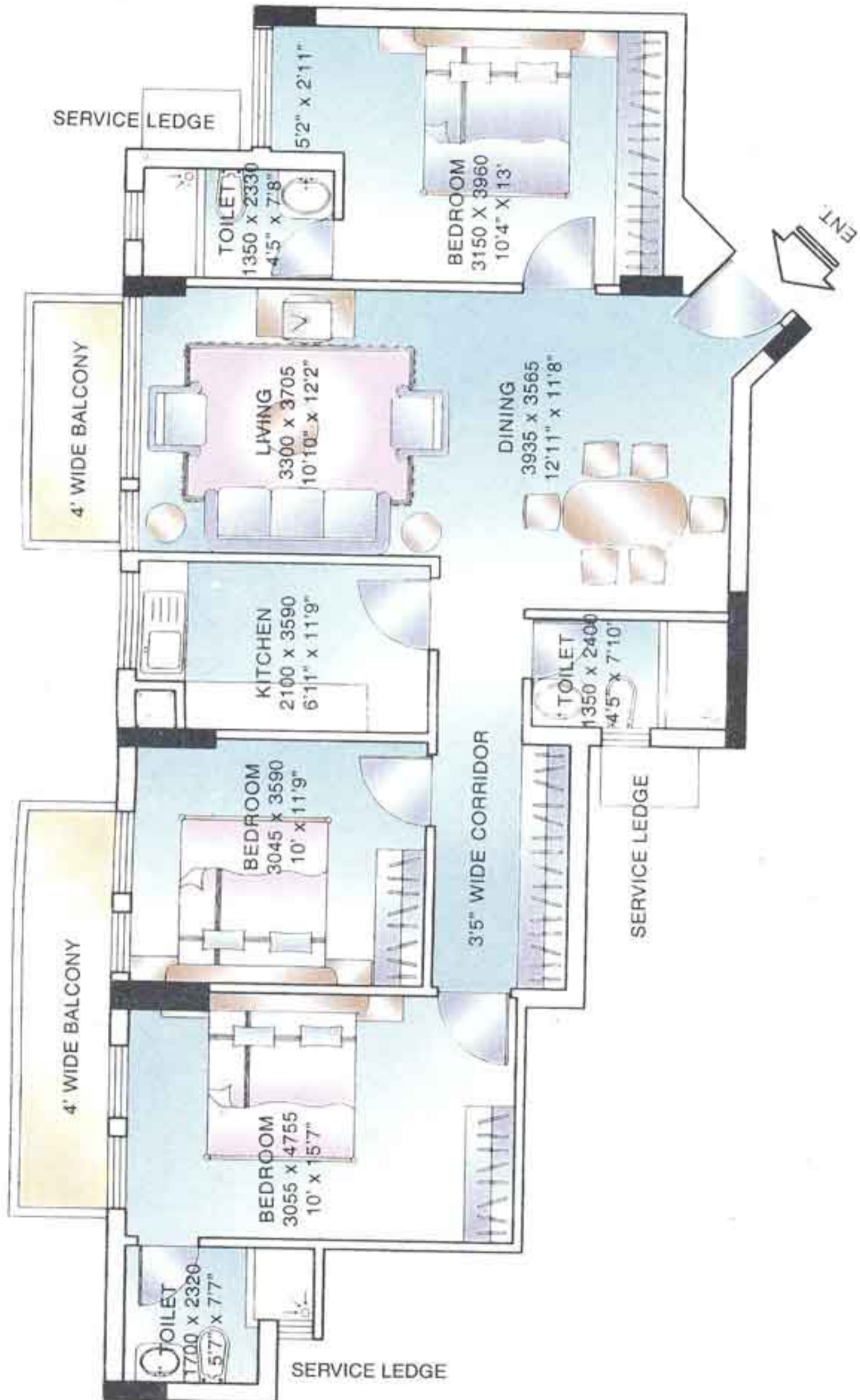
**FLOOR PLAN**



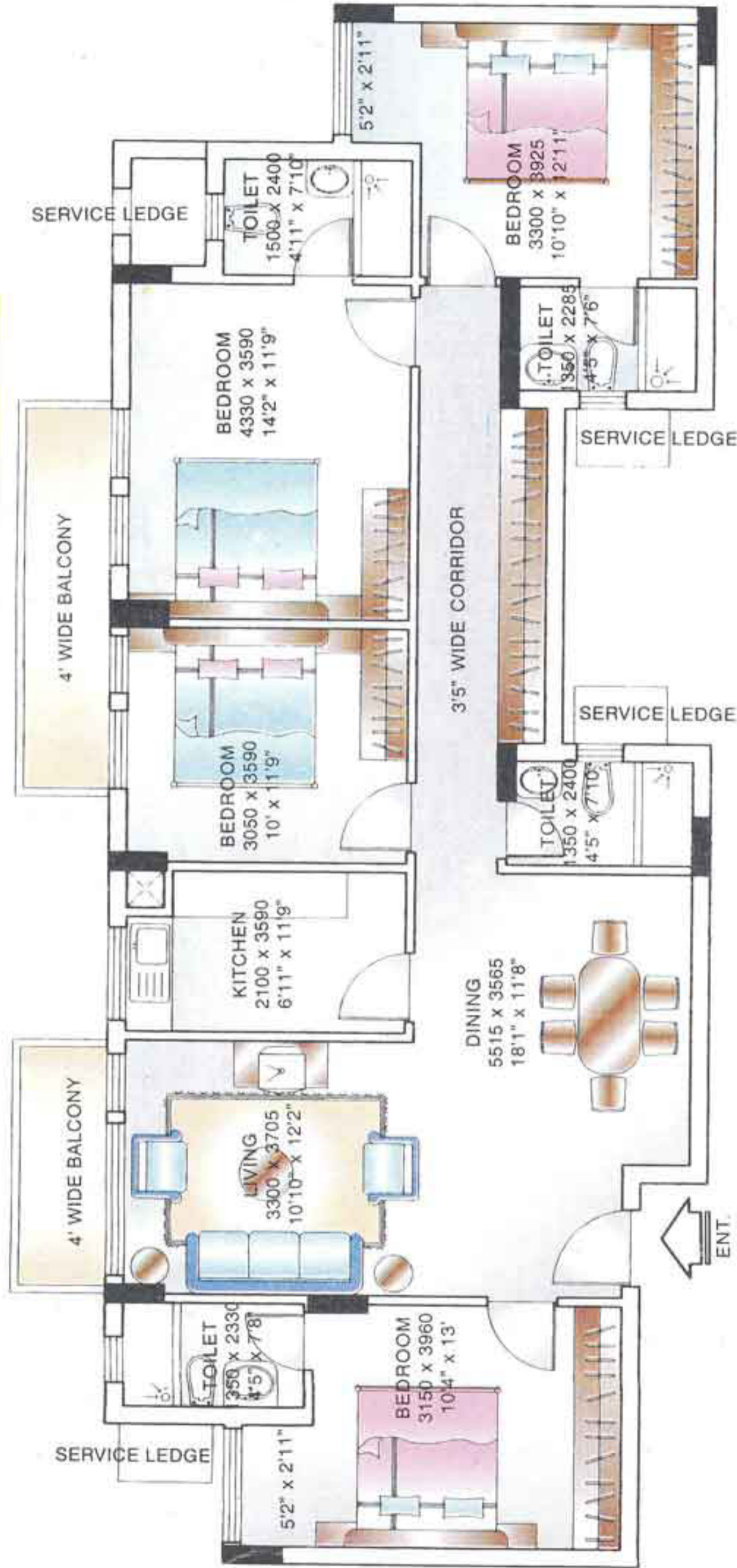
**Unit - 2&3**  
**Block - A**  
**Area - 1443 sq.ft.**  
**Accommodation**  
**3 Bedroom,**  
**Living - Dining,**  
**2 Balconies**

**FLOOR PLAN**

Unit - 4  
Block - A  
Area - 1414 sq.ft.  
Accommodation  
3 Bedroom,  
Living - Dining,  
2 Balconies



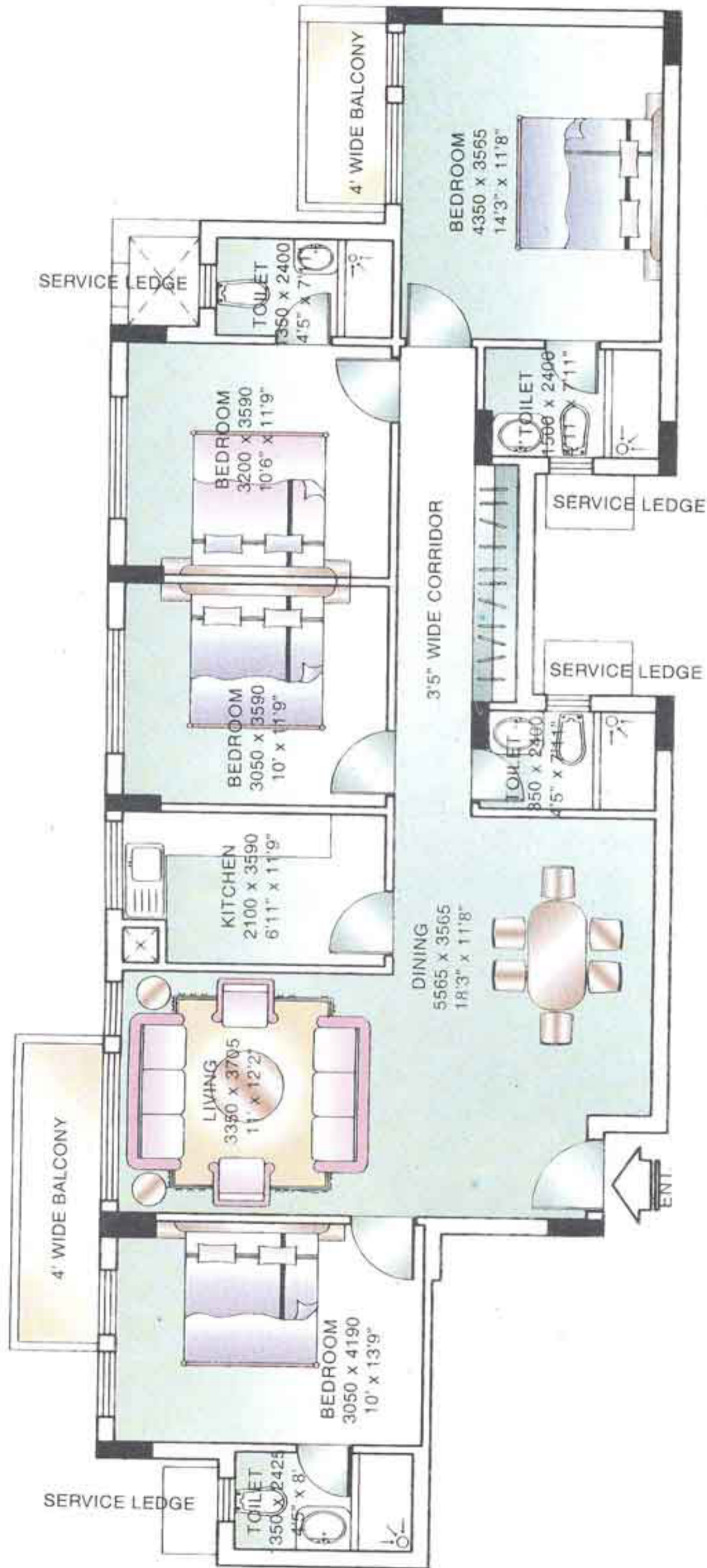
**FLOOR PLAN**



**Unit - 5**  
**Block - A**  
**Area - 1762 sq.ft.**  
**Accommodation**  
**4 Bedroom,**  
**Living - Dining,**  
**2 Balconies**

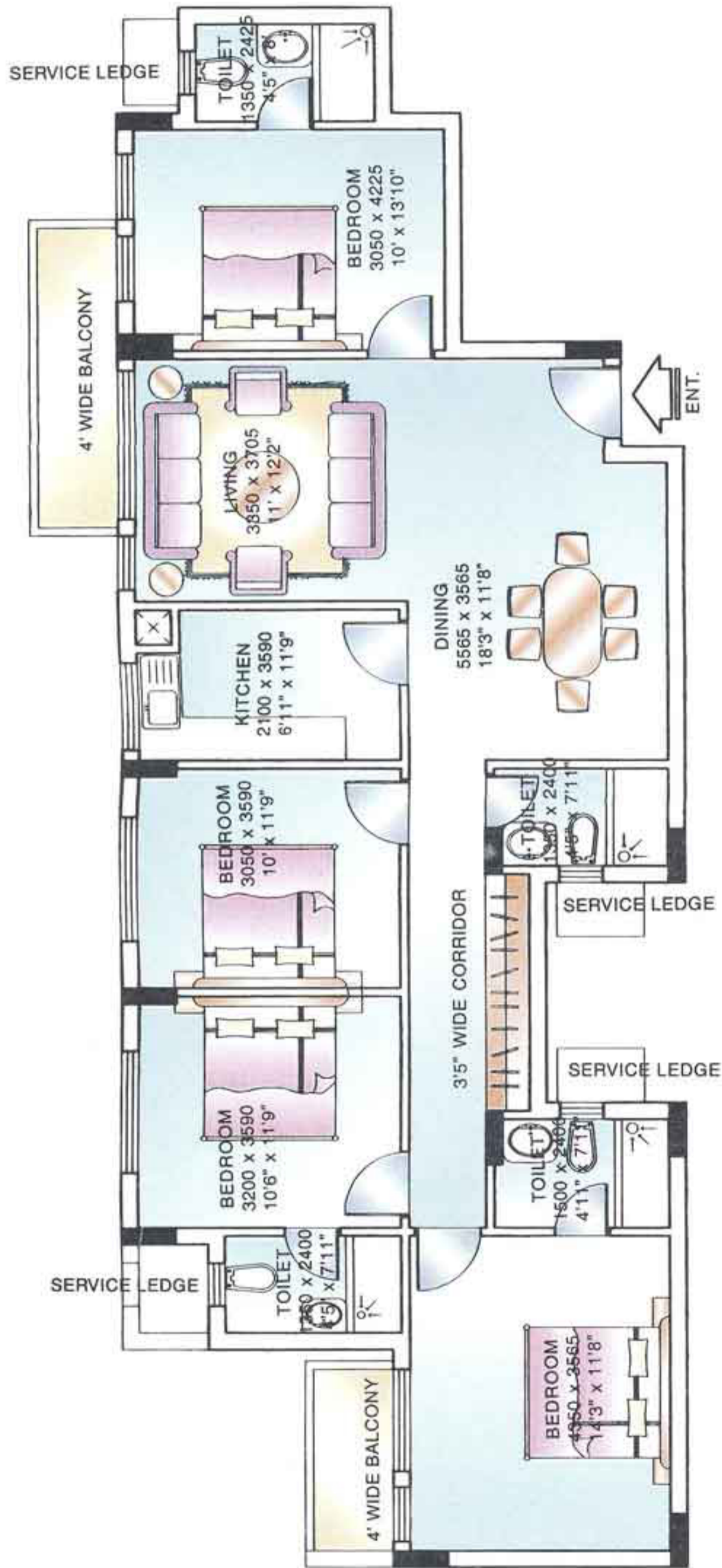
**FLOOR PLAN**

**Unit - 1**  
**Block - B&C**  
**Area - 1696 sq.ft.**  
**Accommodation**  
 4 Bedroom,  
 Living - Dining,  
 2 Balconies





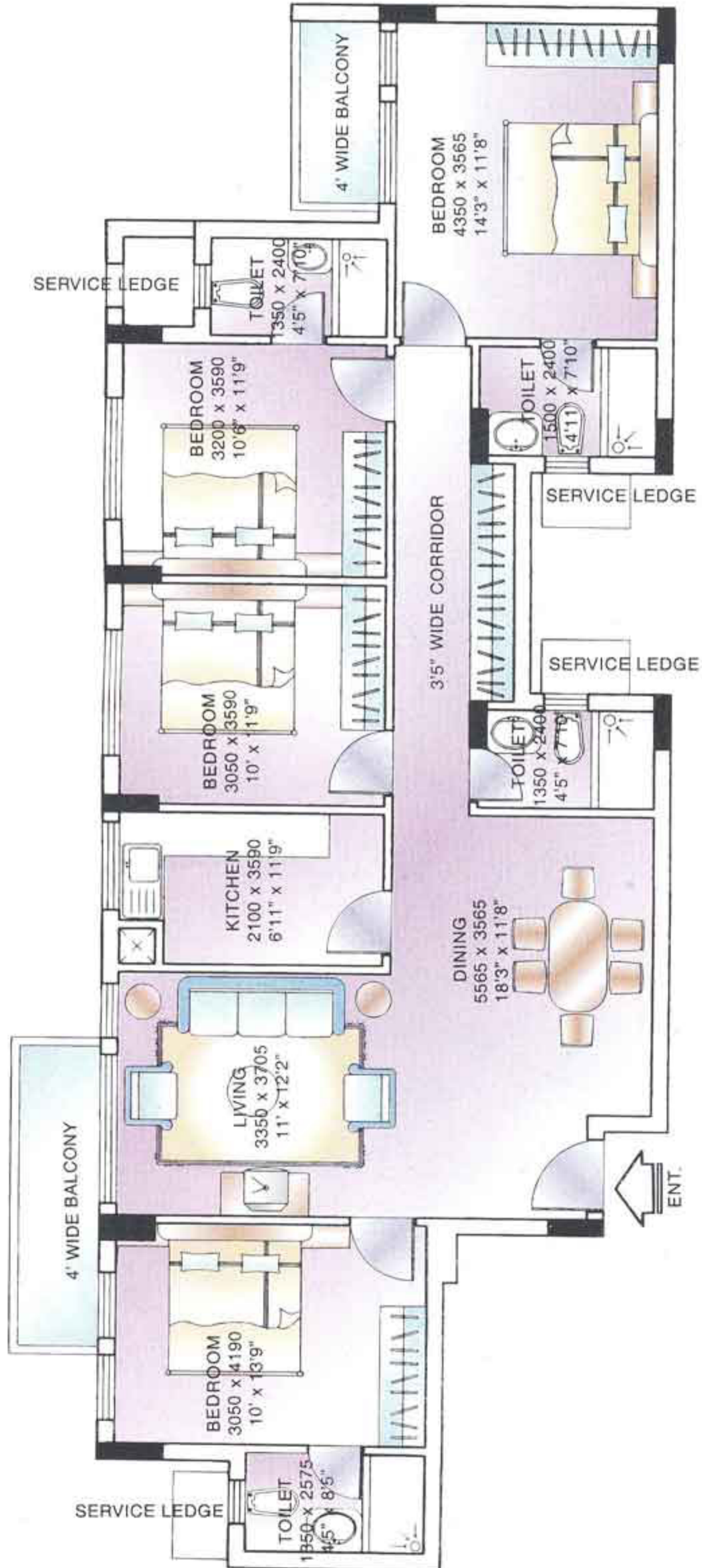
**FLOOR PLAN**



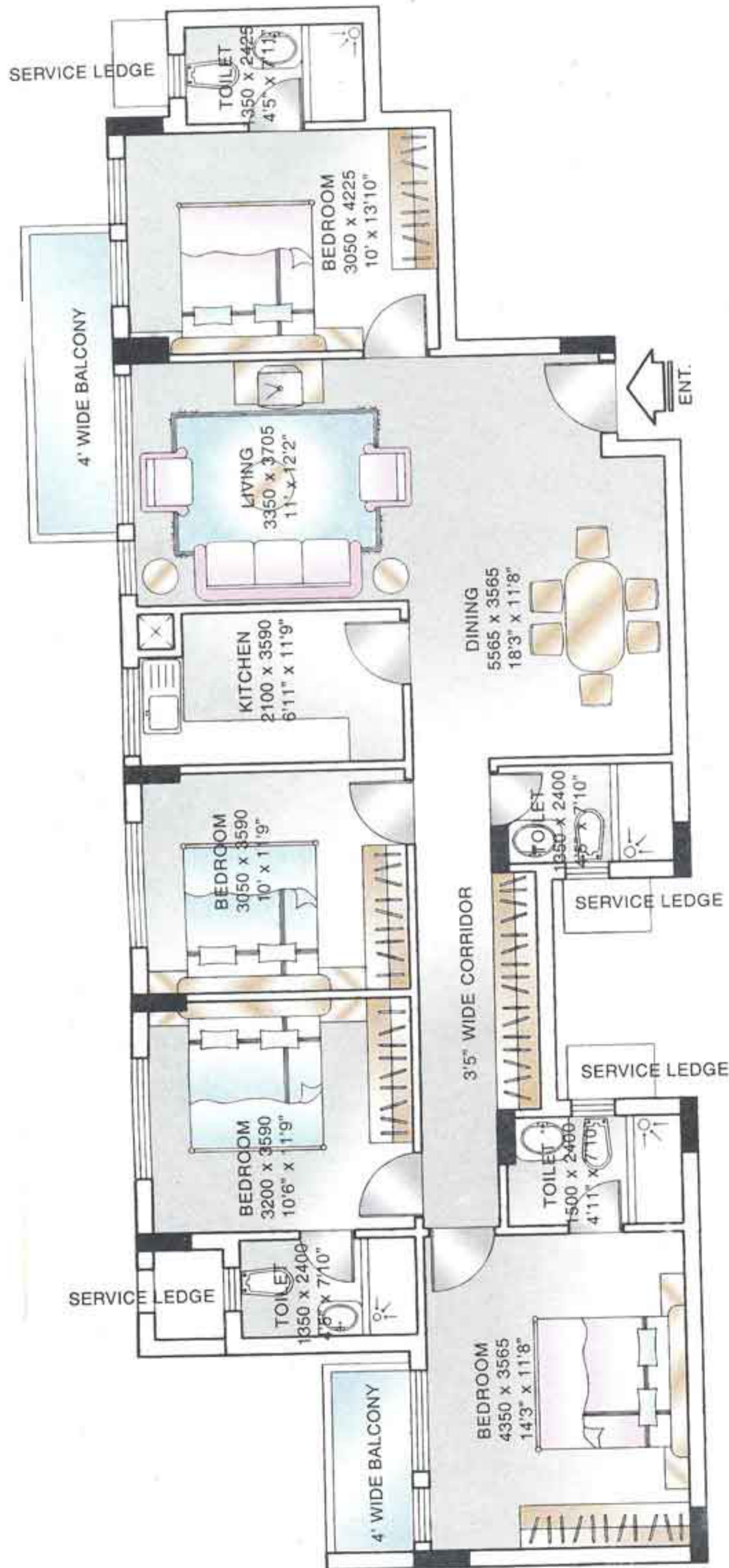
**Unit - 2**  
**Block - B&C**  
**Area - 1701 sq.ft.**  
**Accommodation**  
**4 Bedroom,**  
**Living - Dining,**  
**2 Balconies**

**FLOOR PLAN**

**Unit - 1**  
**Block - D**  
**Area - 1706 sq.ft.**  
**Accommodation**  
**4 Bedroom,**  
**Living - Dining,**  
**2 Balconies**



**FLOOR PLAN**



**Unit - 2**  
**Block - D**  
**Area - 1711 sq.ft.**  
**Accommodation**  
**4 Bedroom,**  
**Living - Dining,**  
**2 Balconies**

**APARTMENT SPECIFICATIONS**

**FLOORS**

Living / Dining / Passage & Lobby within Apartment	Marble.
Kitchen & Toilets	Ceramic Tiles.
Bedrooms & Balconies	White Mosaic - Cast-in-situ / Tiles.

**WALLS**

Living / Dining / Bedrooms / Passage & Lobby within Apartment	Plastic (Acrylic) Emulsion paint.
Kitchen & Toilets	Combination of ceramic tiles, Oil bound distemper and / or Mirror.

**COUNTERS**

Toilets & Kitchen	Counters in Granite / Marble.
-------------------	-------------------------------

**FITTING / FIXTURES**

Toilets & Kitchen	Single Lever CP fittings / White Chinaware. Stainless Steel Single bowl, single drain board kitchen sink.
-------------------	--

**DOORS & WINDOWS**

Internal Doors	Polished / Painted frames made of hardwood / pressed metal. Entrance door - Teak veneered polished shutter / moulded skin door. Internal door - decorative flush shutter / moulded skin door.
External Doors & Windows	Aluminium.
Toilet Windows	Aluminium / Pressed steel.
Hardware	

**ELECTRICALS**

Plate type switches & sockets, copper wiring (fittings like fans, light fixtures, geysers, appliances etc.. not provided). Back up power of 6.25 KVA / Apartment.

- Marble / Granite being natural materials have inherent characteristics of colour and grain variations.

**CLUB FACILITY**

Party Room, Swimming Pool, Change Rooms & Gymnasium.

All floor plans, layout plans & specifications are indicative and are subject to change as decided by the company or by a