

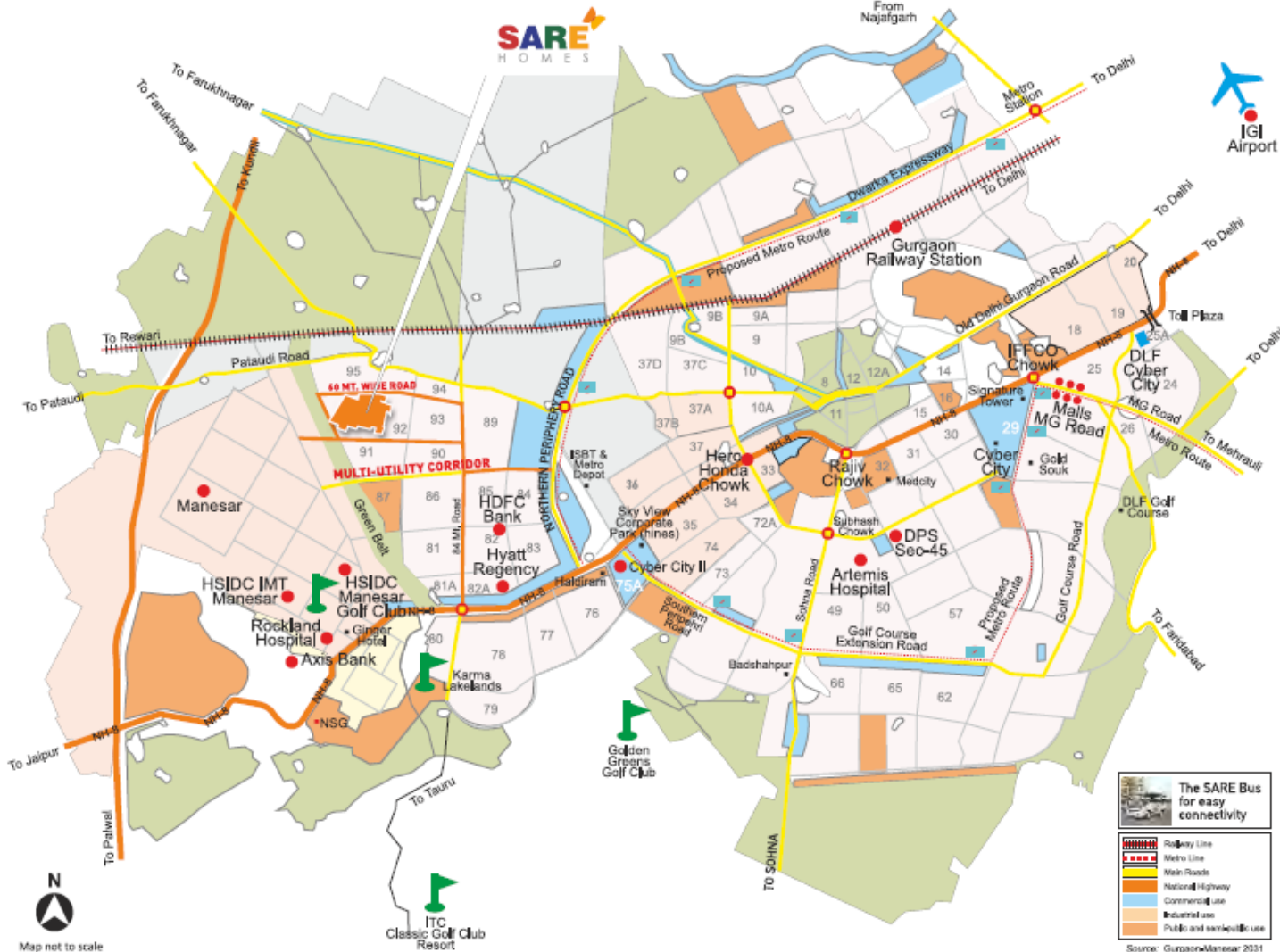


Proposed Elevation



+918470930121 | www.abcbuildcon.in

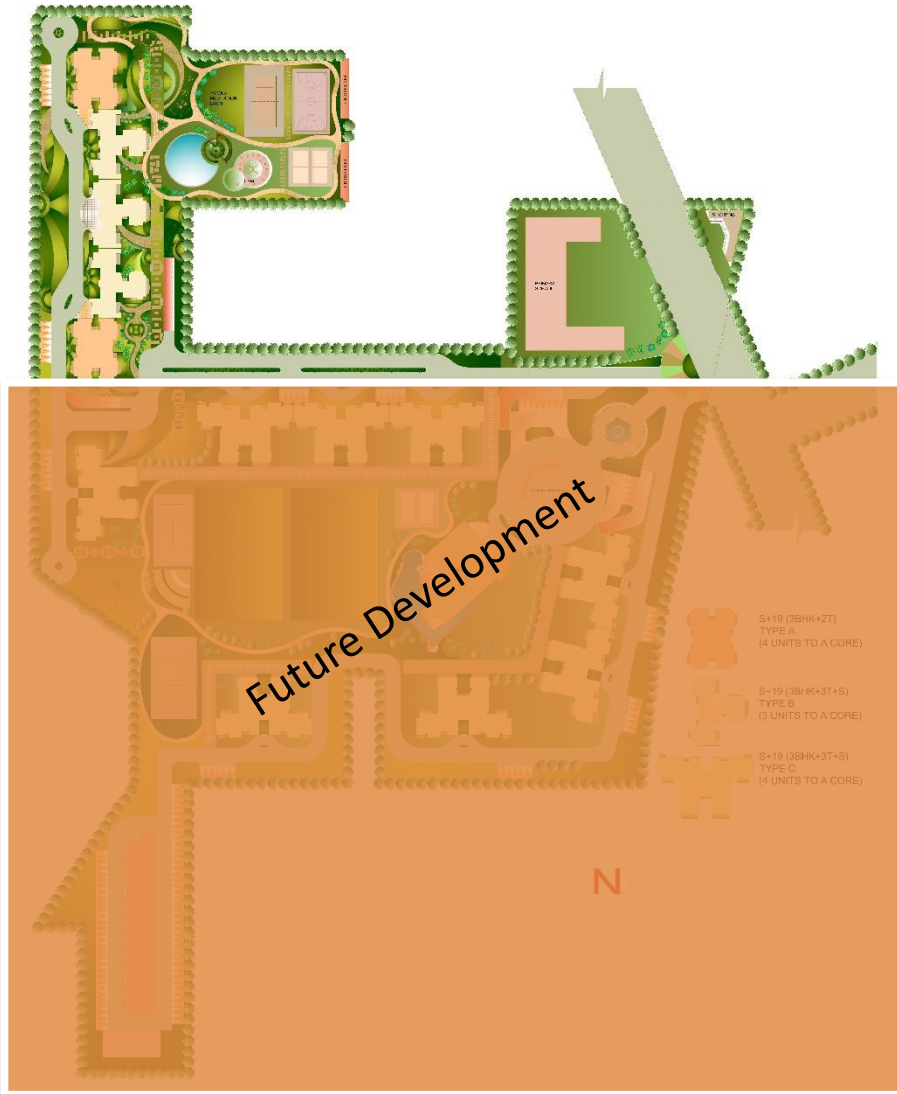
Location



Located in the residential hub of New Gurgaon with wide arterial roads, SARE – Olympia is extremely well connected with easy access to the arteries of NH 8, Southern Periphery Road and Dwarka Expressway.

The current business hubs of Cyber City, IFFCO and Golf Course Road are only 30 mins away, while the new business hub of Cyber City II, Hines Business Park and Industrial area of Manesar are only 5-7 mins away.

Master Layout



Olympia is a 17.12 Acres of gated community set amidst large landscaped greens. An array of outdoor sporting facilities ranging from football courts to toddlers zones, life will no more be confined to the four walls.

Outdoor Indulgence



Football court



Maze



Toddlers Park



Cycling Track



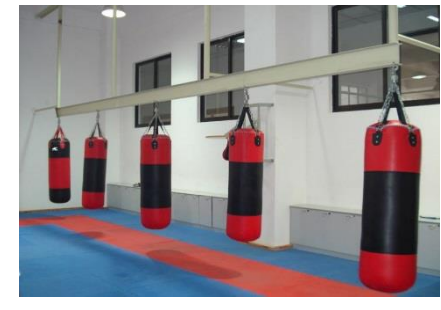
Basket Ball Court



Open Air Gym



Cricket Pitch



Tough Kids Zone



Swimming Pool



Yoga & Meditation Zone



Rock Climbing



Lawn Tennis

Many more



Sand Pit



Billiards / Pool



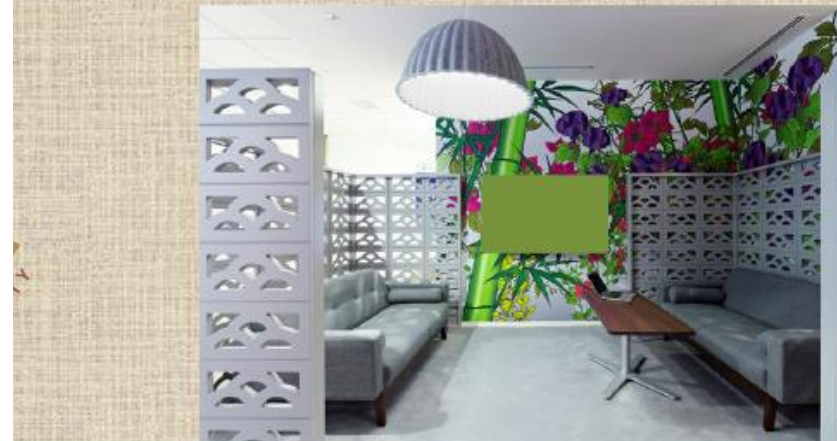
Sports themed stilt level



Table Tennis



Sauna & Steam



Sports Lounge in Every Tower

Phase Plan



S+19 (3BHK+2T)
TYPE A
(4 UNITS TO A CORE)

S+19 (3BHK+3T+S)
TYPE B
(3 UNITS TO A CORE)

Salient Features

- Sports lounge in all towers.
- Structure confirming to Seismic Zone 5 specifications
- Confirming to IGBC Green Building Norms
- Roof top terrace garden
- Restricted surface movement for vehicles.
- Solar water heating
- Solid waste management



- Separate living & dining areas to offer optimum privacy.
- Spacious balconies offering panoramic views.
- All bedrooms with dedicated wardrobe niche
- Ample sunlight and cross ventilation.
- Just 4 apartments per floor (3 BHK + 2 Toilets)
- Just 3 apartments per floor (3BHK + Toilets + Sqt)

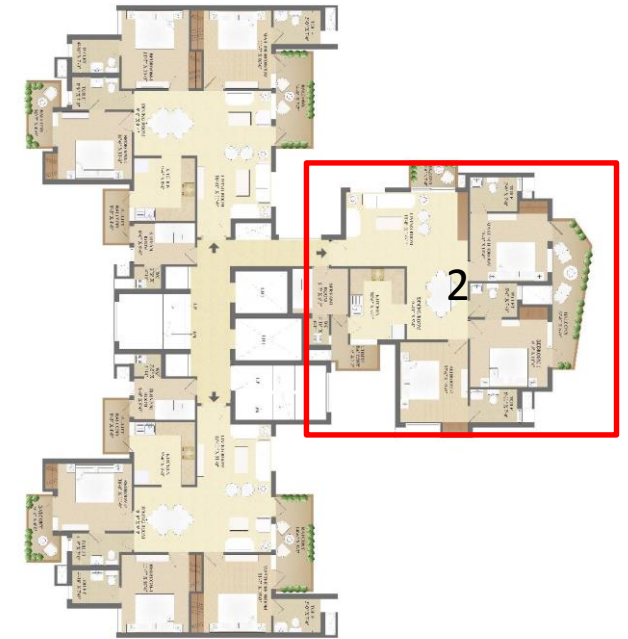
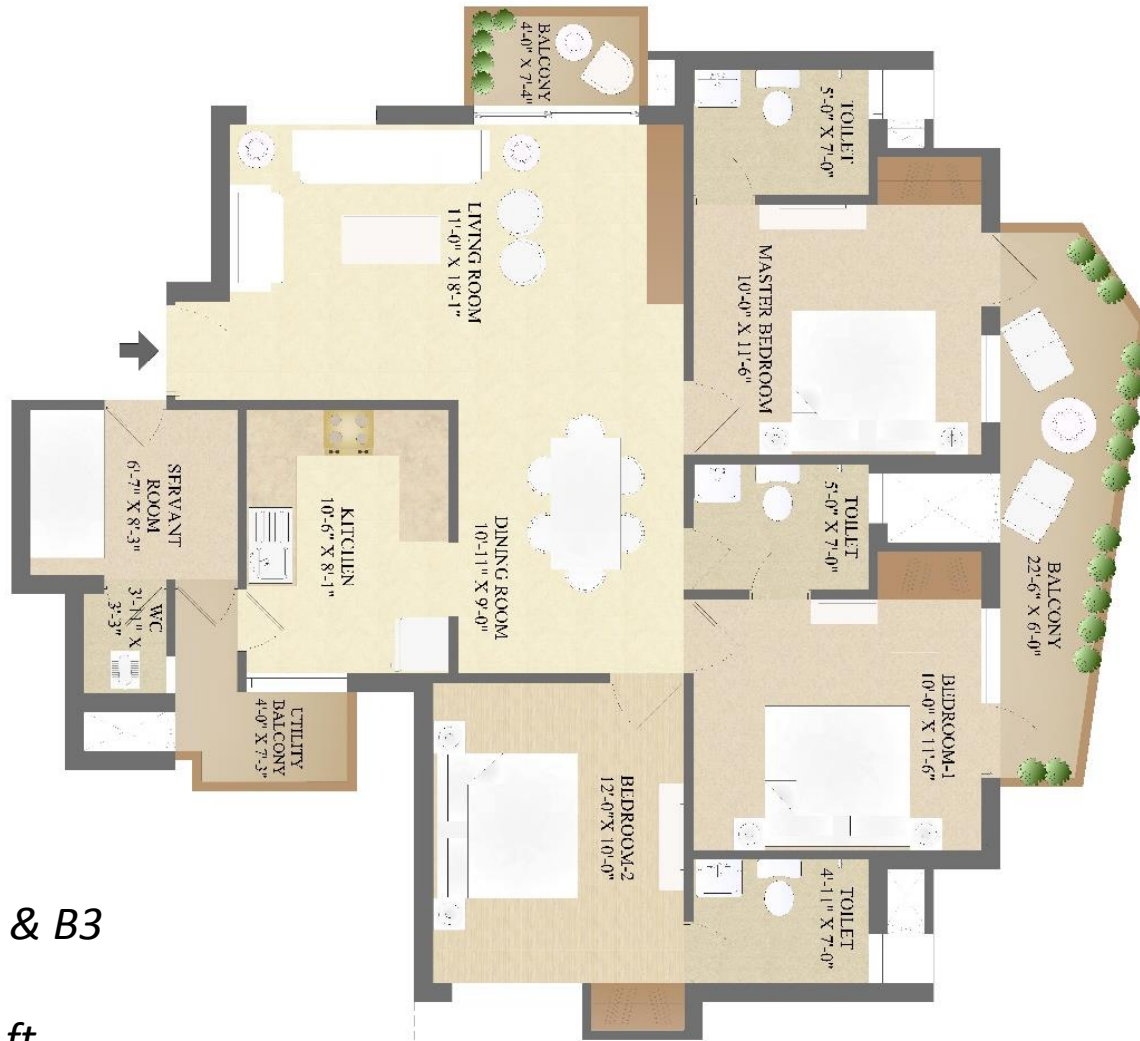
3 BHK + 2T



Tower - A1 & A2
Unit No 1,2,3 & 4
Area 1295 Sq. ft.



3 BHK + 3T + Sqt



Tower - B1/B2 & B3
 Unit No 2
 Area 1660 Sq. ft.

3 BHK + 3T + Sqt



Tower – B1, B2 & B3
 Unit No 1 & 3
 Area 1660 Sq. ft.