



Spaces in harmony with you

+918470930121 | www.abcbuildcon.in



+918470930121 | www.abcbuildcon.in



Welcome to the High Life

+918470930121 | www.abcbuildcon.in



Enter a lifestyle that's truly a class apart

House of Hiranandani brings to you a serene lifestyle that is away from the city's cacophony, yet so close to all the essential amenities.

Welcome to Hebbal - A life ensconced in luxury, comfort and peace.

Hebbal is well connected to the Outer Ring Road and is well known for its parks, greenery, boating facilities and bird watching activities. It also hosts several companies and business parks, thus offering easy accessibility to the work place.

Equipped with superlative amenities, Hebbal brings alive an ideal urban experience in harmony with nature that enhances the way you live.

Opening statement

+918470930121 | www.abcbuildcon.in



+918470930121 | www.abcbuildcon.in

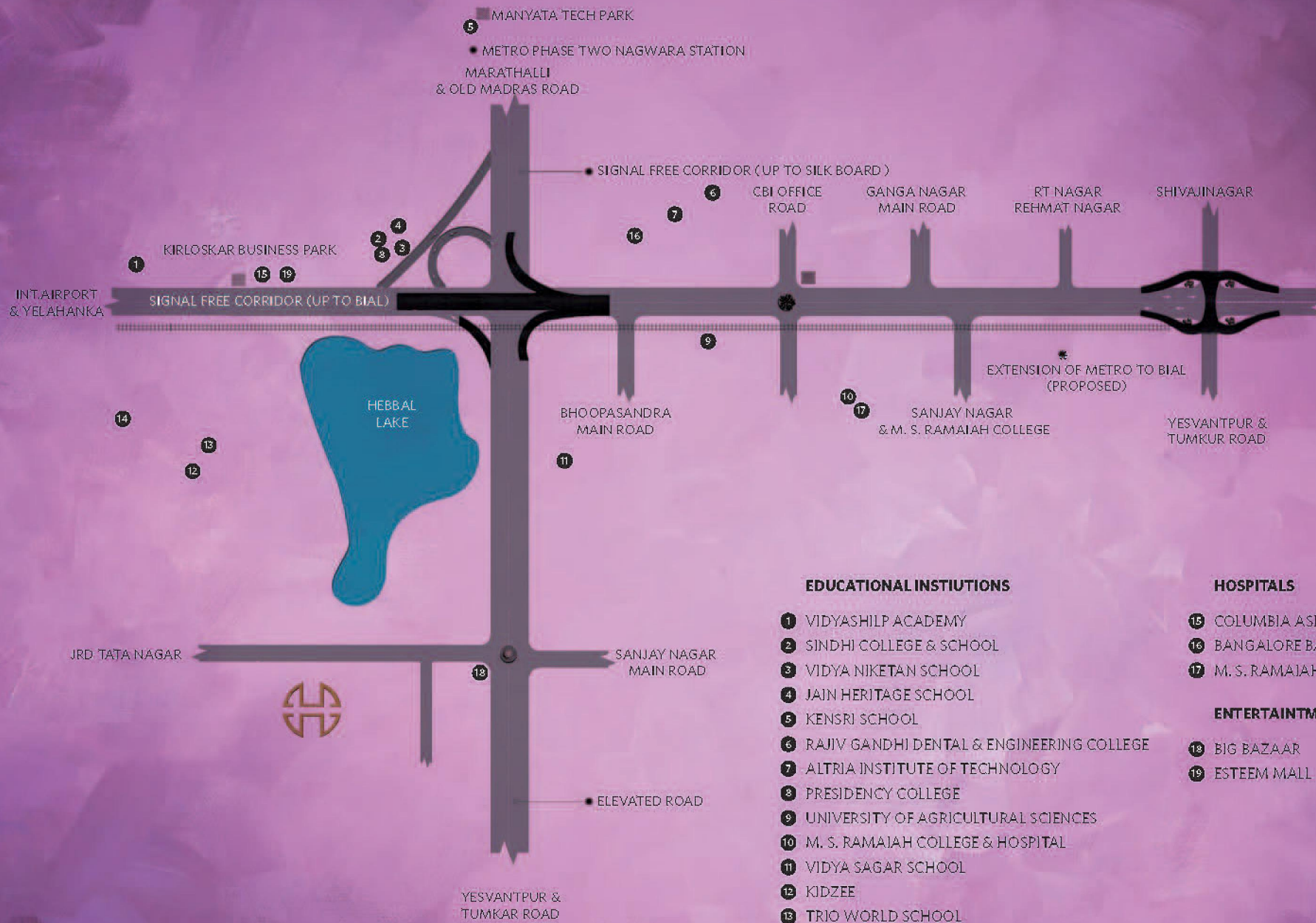
Apolo

Stability of position

Strategically located to keep everything
at your beck-and-call



The prime address of Hebbal keeps you close to the city with the Outer Ring Road and Bellary Road. It boasts of a world-class infrastructure that offers excellent connectivity through well-linked roads. The proposed metro lines will further connect Hebbal to different parts of the city.



EDUCATIONAL INSTIUTIONS

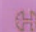
- 1 VIDYASHILP ACADEMY
- 2 SINDHI COLLEGE & SCHOOL
- 3 VIDYA NIKETAN SCHOOL
- 4 JAIN HERITAGE SCHOOL
- 5 KENSRI SCHOOL
- 6 RAJIV GANDHI DENTAL & ENGINEERING COLLEGE
- 7 ALTRIA INSTITUTE OF TECHNOLOGY
- 8 PRESIDENCY COLLEGE
- 9 UNIVERSITY OF AGRICULTURAL SCIENCES
- 10 M. S. RAMAIAH COLLEGE & HOSPITAL
- 11 VIDYA SAGAR SCHOOL
- 12 KIDZEE
- 13 TRIO WORLD SCHOOL
- 14 MALLYA ADITI INTERNATIONAL SCHOOL

HOSPITALS

- 15 COLUMBIA ASIA HOSPITAL
- 16 BANGALORE BAPTIST HOSPITAL
- 17 M. S. RAMAIAH HOSPITAL

ENTERTAINMENT

- 18 BIG BAZAAR
- 19 ESTEEM MALL

 HOH HEBBAL

* PROPOSED AS PER GOVERNMENT ANNOUNCEMENT

Amenities that pamper you

Hebbal's unrivaled amenities assure you of a lifestyle that is simply, a class apart.

It is bestowed with a well-equipped club house, where you can choose to beat the stress in the swimming pool, squash court or badminton court.



Elaborate style

Bravura

+918470930121 | www.abcbuildcon.in

Badminton Court

Card Room

Swimming Pool

Landscaping

Water Bodies

Additional Facilities:

Fibre to the Home Technology - FTTH

Grand Entrance Lobby

Ample Open Spaces

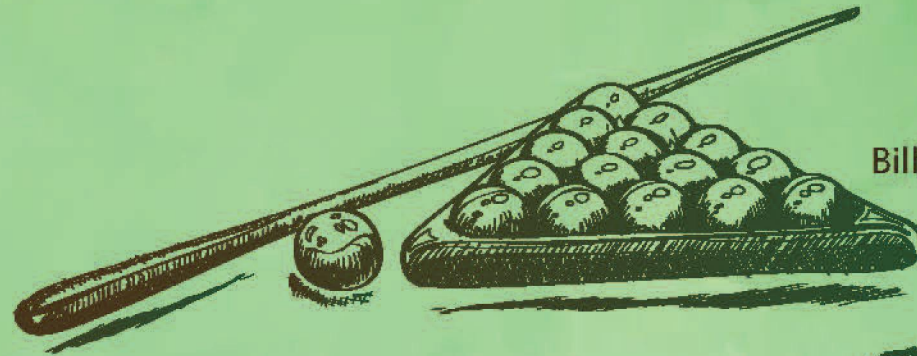
Neo Classical Architecture

High Speed Lifts

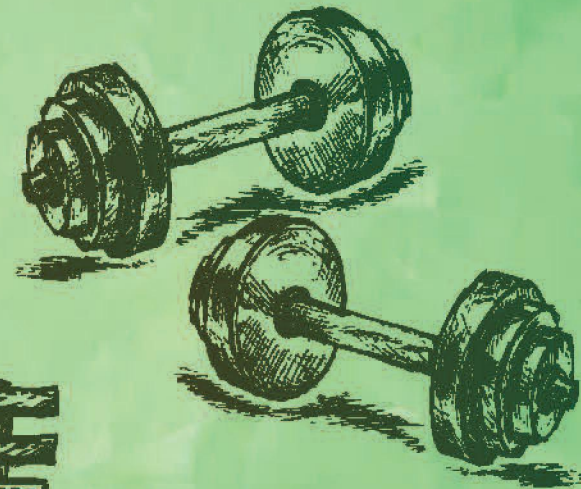
Car Parking Space for Multiple Cars



Badminton Court



Billiards & Snooker / Pool



Gym with Aerobics Hall



Resplendent Parks

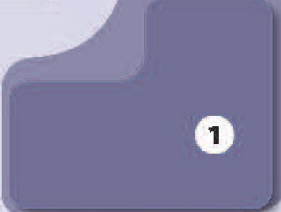
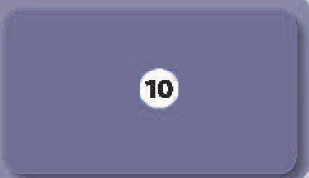
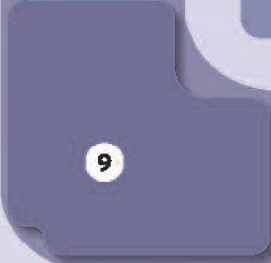
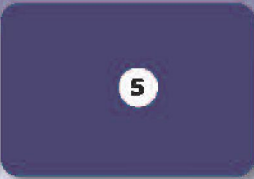
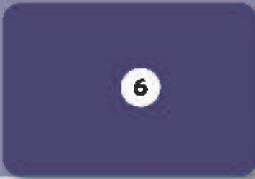
PIROUETTE

Spin



Methodical plans for a luxurious life

+918470930121 | www.abcbuildcon.in



- | | |
|-----------------------|-----------------------|
| 1 GLEN GATE WING A | 7 GLEN RIDGE A |
| 2 GLEN GATE WING B | 8 GLEN RIDGE B |
| 3 GLEN GATE WING C | 9 GLEN RIDGE C |
| 4 GLEN CLASSIC WING A | 10 FUTURE DEVELOPMENT |
| 5 GLEN CLASSIC WING B | 11 CLUB HOUSE |
| 6 GLEN CLASSIC WING C | |

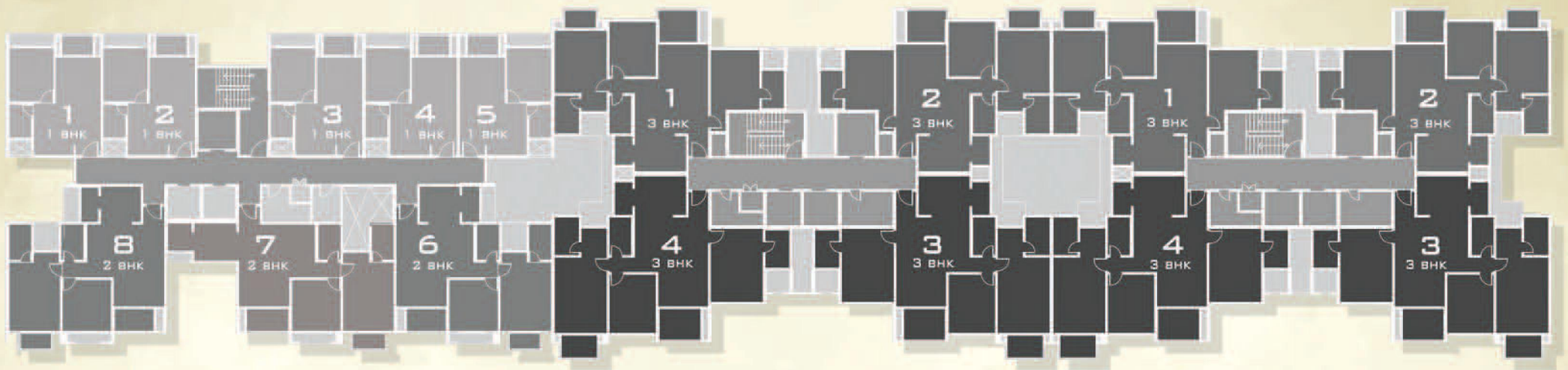


The plans are subject to approval, change and modification. Location of Future Blocks are only indicative in nature.

HEBBAL

GLEN CLASSIC

KEY PLAN: TYPICAL FLOOR PLAN



WING - C

S + 18

WING - C

TYPE	FLAT NOS.	B. U. A.	SALEABLE AREA
1 BHK	1, 2, 3, 4 & 5	522	655
2 BHK	6 & 8	1017	1270
2 BHK	7	1037	1295

WING - B

S + 18

WING - B

TYPE	FLAT NOS.	B. U. A.	SALEABLE AREA
3 BHK	1 & 2	1320	1650
3 BHK	3 & 4	1456	1820

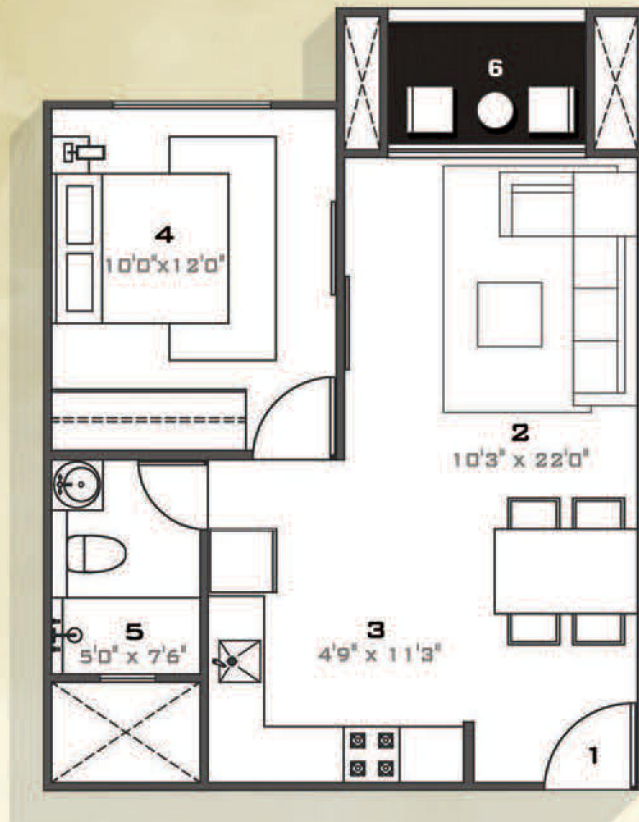
WING - A

S + 18

WING - A

TYPE	FLAT NOS.	B.U.A.	SALEABLE AREA
3 BHK	1 & 2	1320	1650
3 BHK	3 & 4	1456	1820

GLEN CLASSIC



- 1 - ENTRANCE FOYER
- 2 - LIVING ROOM
- 3 - KITCHEN
- 4 - BEDROOM
- 5 - COMMON TOILET
- 6 - BALCONY

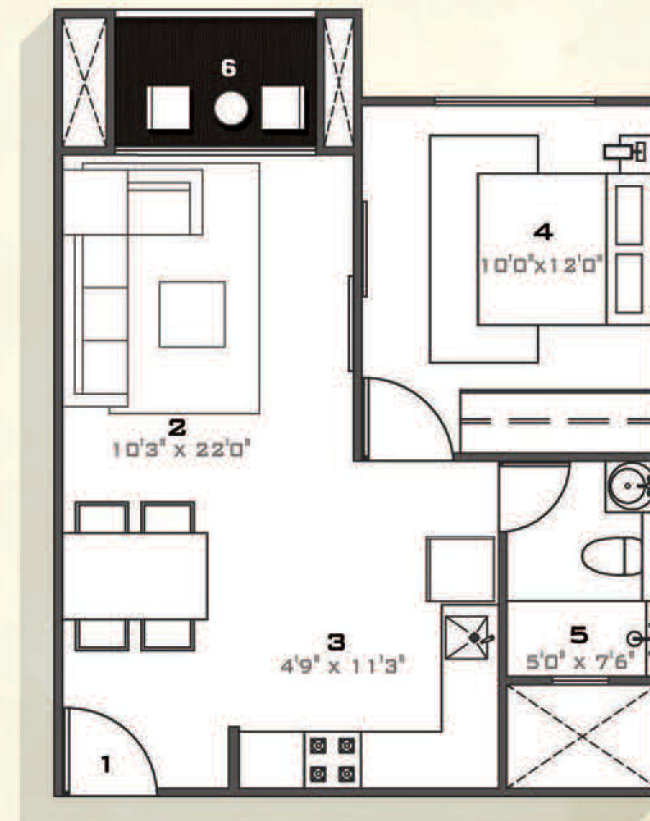
TYPICAL FLOOR

TYPE	WING	FLAT NO.	B.U.A	SALEABLE AREA
1BHK	C	1,2,3 & 4	522	655

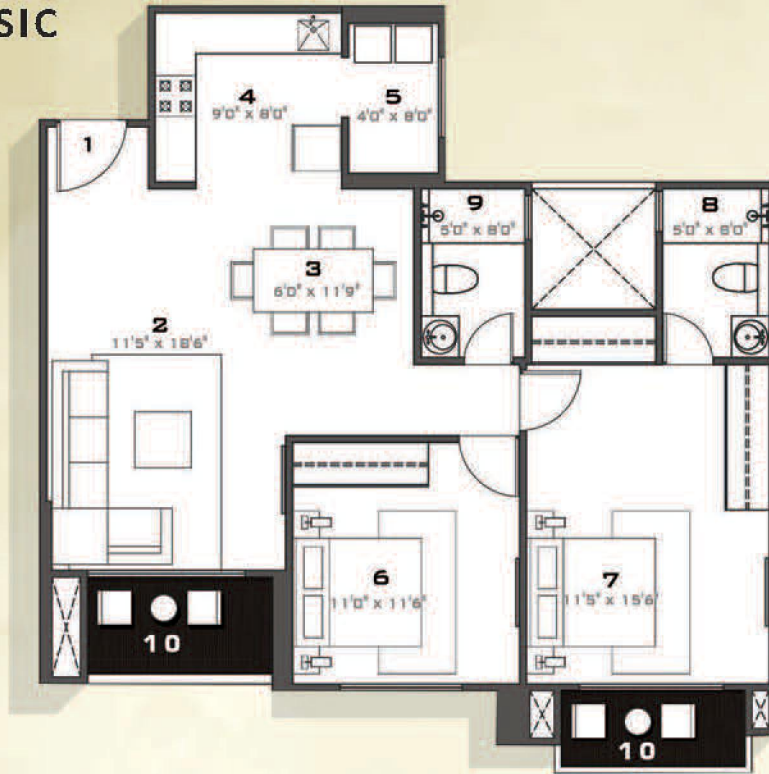
- ENTRANCE FOYER - 1
- LIVING ROOM - 2
- KITCHEN - 3
- BEDROOM - 4
- COMMON TOILET - 5
- BALCONY - 6

TYPICAL FLOOR

TYPE	WING	FLAT NO.	B.U.A	SALEABLE AREA
1BHK	C	5	522	655



GLEN CLASSIC



- 1 - ENTRANCE FOYER
- 2 - LIVING ROOM
- 3 - DINING ROOM
- 4 - KITCHEN
- 5 - UTILITY
- 6 - BEDROOM - 1
- 7 - MASTER SUITE
- 8 - MASTER TOILET
- 9 - COMMON TOILET
- 10 - BALCONY

TYPICAL FLOOR

TYPE	WING	FLAT NO.	B.U.A	SALEABLE AREA
2 BHK	C	6	1017	1270

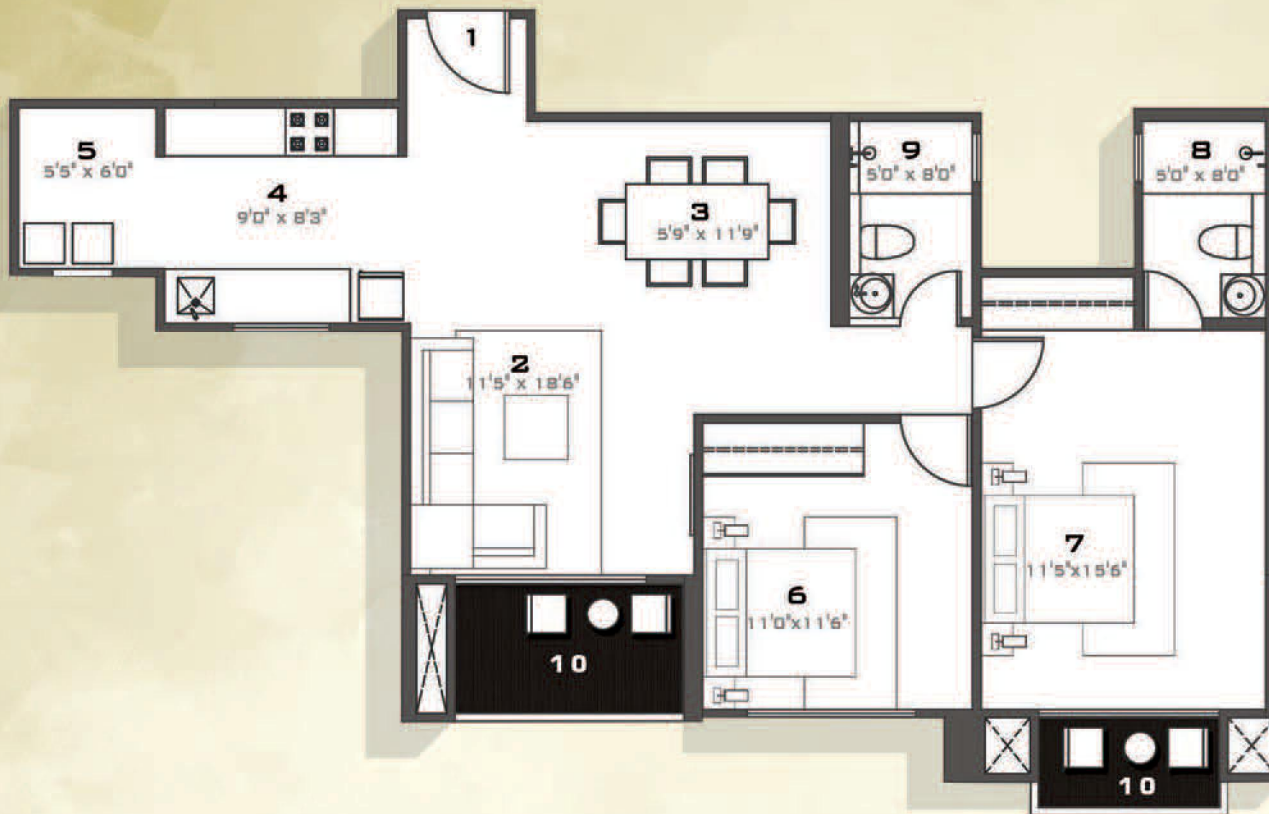
- ENTRANCE FOYER - 1
- LIVING ROOM - 2
- DINING ROOM - 3
- KITCHEN - 4
- UTILITY - 5
- BEDROOM - 1 - 6
- MASTER SUITE - 7
- MASTER TOILET - 8
- COMMON TOILET - 9
- BALCONY - 10

TYPICAL FLOOR

TYPE	WING	FLAT NO.	B.U.A	SALEABLE AREA
2 BHK	C	8	1017	1270



GLEN CLASSIC



- 1 - ENTRANCE FOYER
- 2 - LIVING ROOM
- 3 - DINING ROOM
- 4 - KITCHEN
- 5 - UTILITY
- 6 - BEDROOM - 1
- 7 - MASTER SUITE
- 8 - MASTER TOILET
- 9 - COMMON TOILET
- 10 - BALCONY

TYPICAL FLOOR

TYPE	WING	FLAT NO.	B.U.A	SALEABLE AREA
2 BHK	C	7	1037	1295

- ENTRANCE FOYER - 1
- LIVING ROOM - 2
- DINING ROOM - 3
- KITCHEN - 4
- UTILITY - 5
- BEDROOM - 1 - 6
- TOILET - 1 - 7
- BEDROOM - 2 - 8
- MASTER SUITE - 9
- MASTER TOILET - 10
- COMMON TOILET - 11
- BALCONY - 12

TYPICAL FLOOR

TYPE	WING	FLAT NO.	B.U.A	SALEABLE AREA
3 BHK	A & B	1	1320	1650



GLEN CLASSIC



- 1 - ENTRANCE FOYER
- 2 - LIVING ROOM
- 3 - DINING ROOM
- 4 - KITCHEN
- 5 - UTILITY
- 6 - BEDROOM - 1
- 7 - TOILET - 1
- 8 - BEDROOM - 2
- 9 - MASTER SUITE
- 10 - MASTER TOILET
- 11 - COMMON TOILET
- 12 - BALCONY

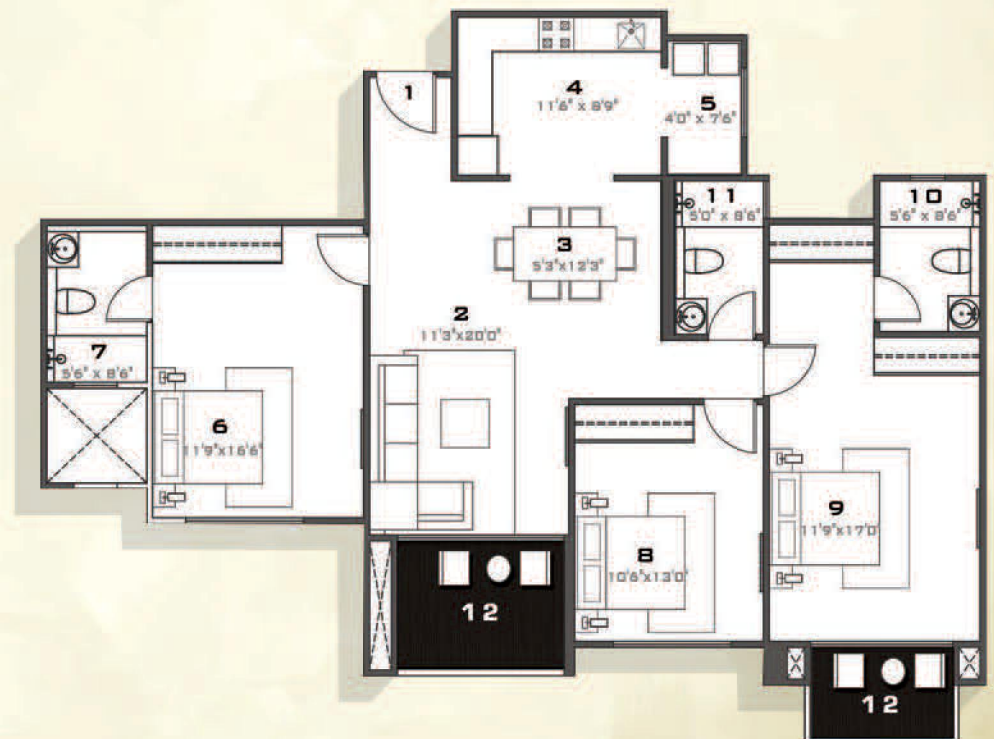
TYPICAL FLOOR

TYPE	WING	FLAT NO.	B.U.A	SALEABLE AREA
3 BHK	A & B	2	1320	1650

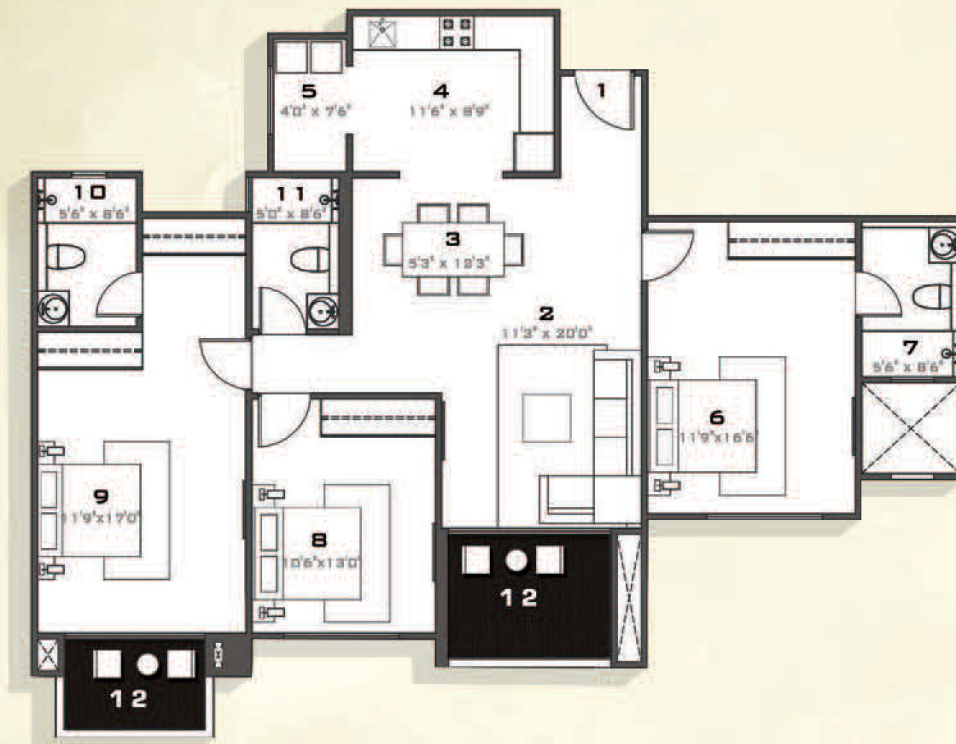
- ENTRANCE FOYER - 1
- LIVING ROOM - 2
- DINING ROOM - 3
- KITCHEN - 4
- UTILITY - 5
- BEDROOM - 1 - 6
- TOILET - 1 - 7
- BEDROOM - 2 - 8
- MASTER SUITE - 9
- MASTER TOILET - 10
- COMMON TOILET - 11
- BALCONY - 12

TYPICAL FLOOR

TYPE	WING	FLAT NO.	B.U.A	SALEABLE AREA
3 BHK	A & B	3	1456	1820



GLEN CLASSIC



- 1 - ENTRANCE FOYER
- 2 - LIVING ROOM
- 3 - DINING ROOM
- 4 - KITCHEN
- 5 - UTILITY
- 6 - BEDROOM - 1
- 7 - TOILET - 1
- 8 - BEDROOM - 2
- 9 - MASTER SUITE
- 10 - MASTER TOILET
- 11 - COMMON TOILET
- 12 - BALCONY

TYPICAL FLOOR

TYPE	WING	FLAT NO.	B.U.A	SALEABLE AREA
3 BHK	A & B	4	1456	1820



HOUSE OF
HIRANANDANI
HEBBAL, BENGALURU

Kodigehalli Extension, Municipal ward No. 15, Bytarayanapura city, Municipal Council Bangalore North Taluka, Bangalore - 560092, Karnataka.

T: 1800 121 1234 E: bangalore@houseofhiranandani.com; info@houseofhiranandani.com W: www.houseofhiranandani.com

The layout details, amenities and facilities mentioned/shown are subject to changes/relocation within the composite development/are subject to modification, amendment, changes and revocable, without any notice at the discretion of the Developer. Any location plans given are only indicative in nature and may not depict actual locations. Images used are for representative purpose only. *Conditions apply.

The project is financed by ICICI Bank Ltd.

+918470930121 | www.abcbuildcon.in