

M2K

adani



Adani M2K Projects LLP
Site – Sector 102 / 102A, off Dwarka Expressway, Gurgaon. INDIA.
Sales Office – Adani House, Plot No.83, Sector 32, Gurgaon 122001.INDIA.
For enquiries call: +91 124 2555168. Email: info@adanim2k.com
www.adanim2k.com



OYSTER
GRANDÉ
Floor Plans

Legends

01. Entrance Court
02. Drop off Area
03. Parking
04. Clubhouse
05. Tennis Court
06. Basketball Court
07. Batminton Court
08. Preteen Play Area
09. Tot Lot/Day Care
10. Kids Play Area
11. Water Body Feature
12. Lap Pool
13. Kids Pool
14. Jacuzzi
15. Mound Garden
16. Sculpture Garden
17. Sitting Court
18. Sand Pit
19. Nursery School
20. School Bus Parking
21. Convenient Shopping



- 3 BHK – Tower D & E (G+21 Floors)
Saleable area: 1689 sq.ft. & 1699 sq.ft.
- 3 BHK + Servant Room – Tower A, C & F (G+21 Floors)
Saleable area: 1889 sq.ft. & 1898 sq.ft.
- 3 BHK + Study + Servant Room – Tower B (G+21 Floors)
Saleable area: 2579 sq.ft. & 2598 sq.ft.
- 3 BHK + Powder Room + Servant Room – Tower J (G+23 Floors)
Saleable area: 2550 sq.ft.
- 4 BHK + Powder Room + Servant Room – Tower H & J (G+23 Floors)
Saleable area: 3188 sq.ft. & 3198 sq.ft.
- 4 BHK + Family Lounge + Powder Room + Servant Room
– Tower G (G+12/G+24 Floors)
Saleable area: 4548 sq.ft.
- 4 BHK Penthouse – Tower J
Saleable area: 4750 sq.ft.
- 5 BHK Penthouse – Tower G, H & J
Saleable area: 5790 sq.ft., 5826 sq.ft. & 7283 sq.ft.

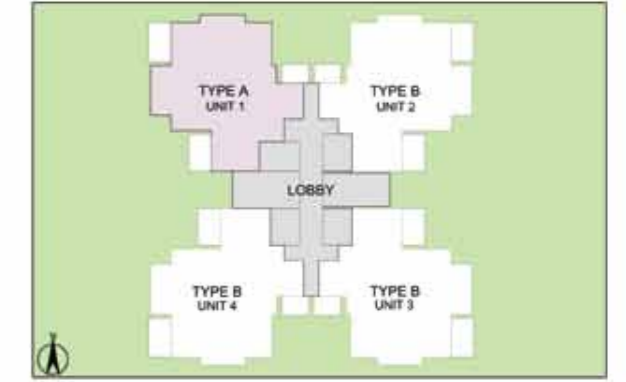
Master Plans

OYSTER
GRANDÉ



OYSTER
GRANDÉ
Bird's Eye View

3 BHK - TYPE A
TOWER - D & E



TOWER PLAN



CLUSTER PLAN



KEY PLAN

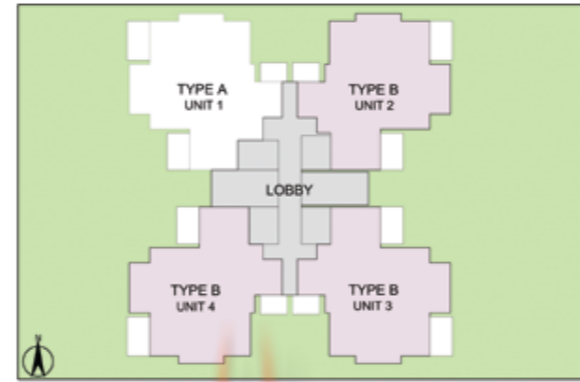
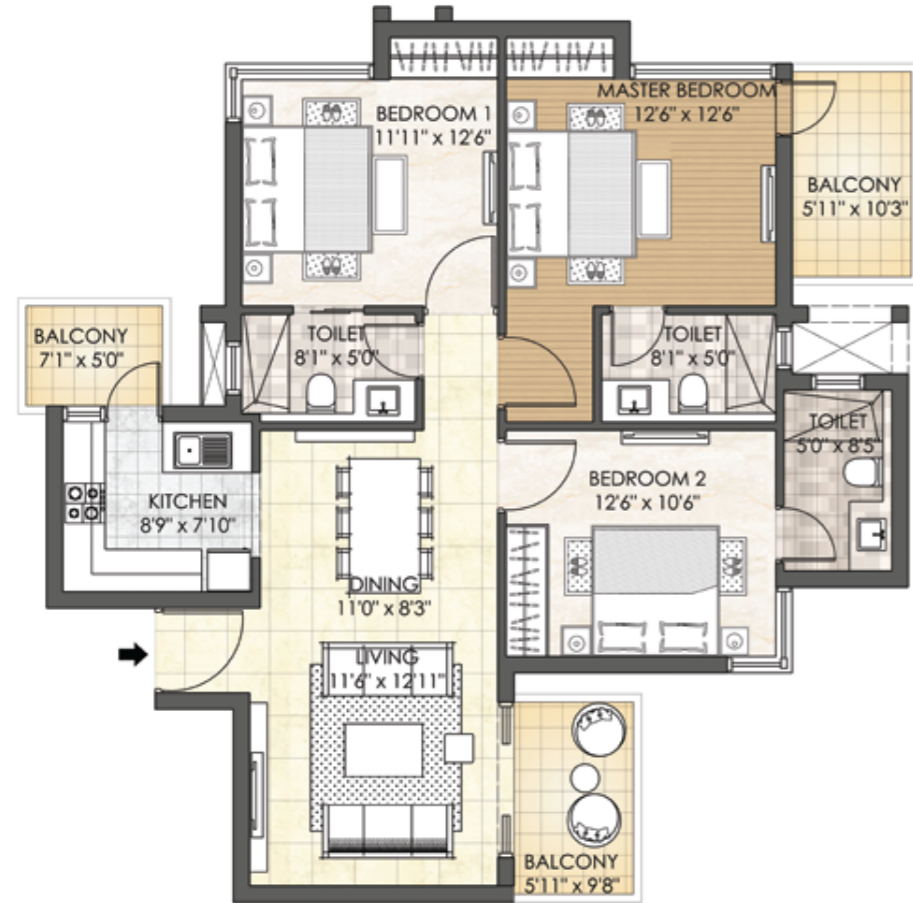
OYSTER
GRANDÉ

SALEABLE AREA - 1699 sq.ft. (157.84 sq.mt.)

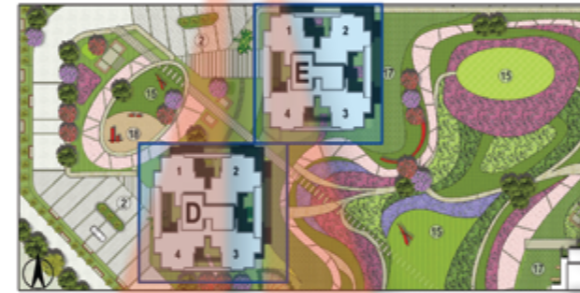
UNIT NO. : D101 - D2101
E101 - E2101

In the interest of maintaining high standards, all floor plans, areas, dimensions, specifications, amenities, images etc. are indicative and are subject to change as decided by the Developer or by any Competent Authority. Soft furnishing, furniture and gadgets are not part of the offering.

3 BHK - TYPE B
TOWER - D & E



TOWER PLAN



CLUSTER PLAN



KEY PLAN



OYSTER
GRANDÉ

SALEABLE AREA - 1689 sq.ft. (156.91 sq.mt.)

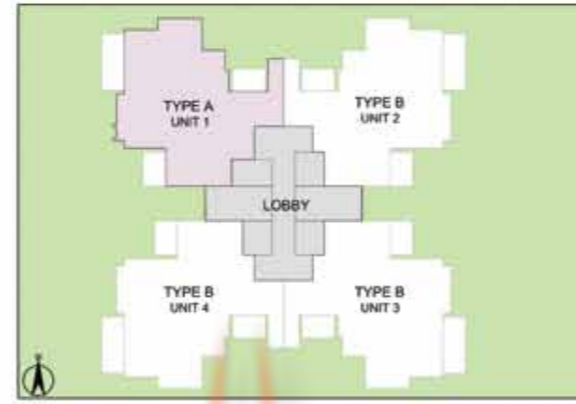
UNIT NO. : D002 - D2102 E002 - E2102
 D003 - D2103 E003 - E2103
 D004 - D2104 E004 - E2104

In the interest of maintaining high standards, all floor plans, areas, dimensions, specifications, amenities, images etc. are indicative and are subject to change as decided by the Developer or by any Competent Authority. Soft furnishing, furniture and gadgets are not part of the offering.

OYSTER
GRANDÉ

Front View

3 BHK + SERVANT ROOM - TYPE A
TOWER - A, C & F



TOWER PLAN

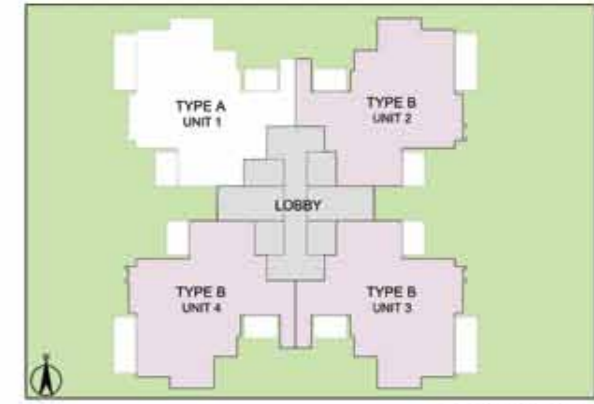


CLUSTER PLAN



KEY PLAN

3 BHK + SERVANT ROOM - TYPE B
TOWER - A, C & F



TOWER PLAN



CLUSTER PLAN



KEY PLAN

OYSTER
GRANDE

SALEABLE AREA - 1898 sq.ft. (176.33 sq.mt.)

UNIT NO. : A101 - A2101
C001 - C2101
F001 - F2101

OYSTER
GRANDE

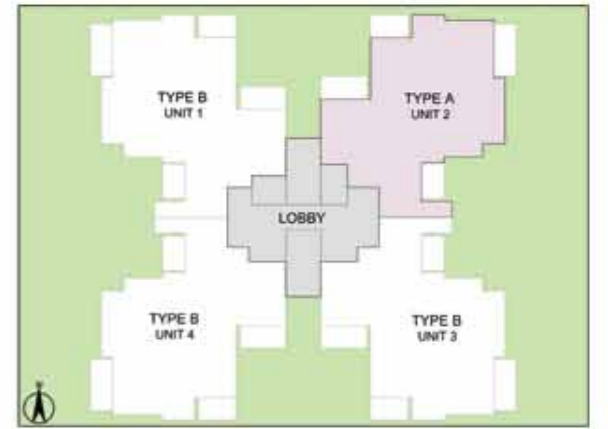
SALEABLE AREA - 1889 sq.ft. (175.49 sq.mt.)

UNIT NO. : A002 - A2102 C002 - C2102 F002 - F2102
A003 - A2103 C103 - C2103 F103 - F2103
A004 - A2104 C004 - C2104 F004 - F2104



OYSTER
GRANDÉ
Central Greens

**3 BHK + STUDY + SERVANT ROOM - TYPE A
TOWER - B**



TOWER PLAN



CLUSTER PLAN



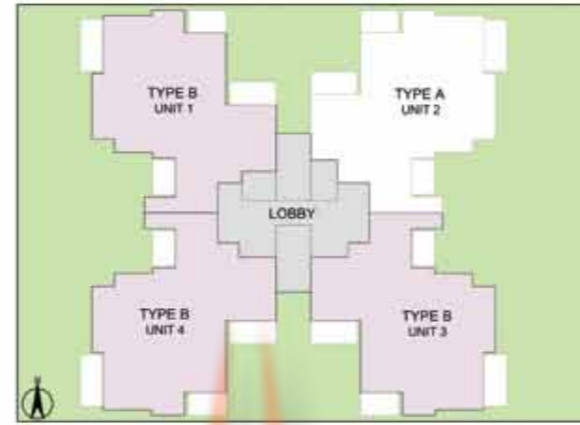
KEY PLAN

OYSTER
GRANDÉ

SALEABLE AREA - 2598 sq.ft. (241.36 sq.mt.)
UNIT NO. : B002 - B2102

In the interest of maintaining high standards, all floor plans, areas, dimensions, specifications, amenities, images etc. are indicative and are subject to change as decided by the Developer or by any Competent Authority. Soft furnishing, furniture and gadgets are not part of the offering.

3 BHK + STUDY + SERVANT ROOM - TYPE B
TOWER - B



TOWER PLAN



CLUSTER PLAN



KEY PLAN

SALEABLE AREA - 2579 sq.ft. (239.59 sq.mt.)

UNIT NO. : B001 - B2101
B003 - B2103
B104 - B2104

OYSTER
GRANDÉ

In the interest of maintaining high standards, all floor plans, areas, dimensions, specifications, amenities, images etc. are indicative and are subject to change as decided by the Developer or by any Competent Authority. Soft furnishing, furniture and gadgets are not part of the offering.



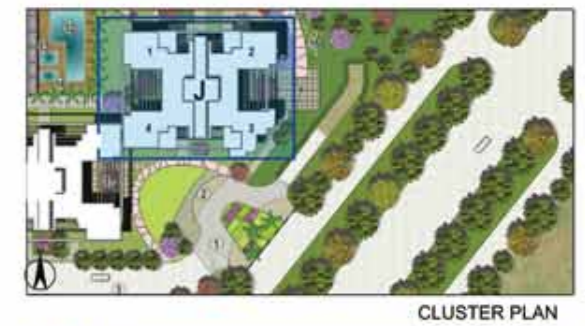
OYSTER
GRANDÉ

Night View



OYSTER
GRANDÉ
Bird's Eye View

**3 BHK + POWDER ROOM + SERVANT ROOM
TOWER - J**

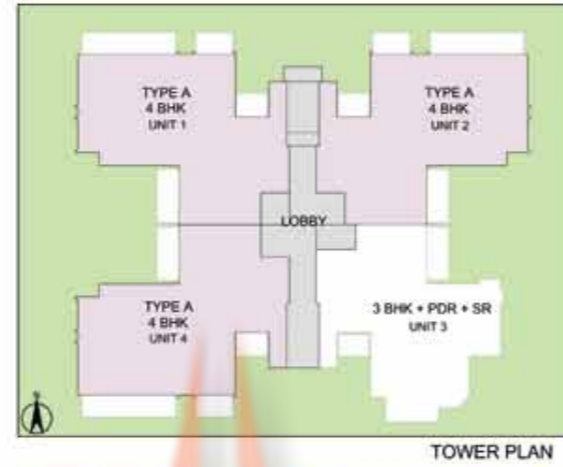


OYSTER
GRANDÉ

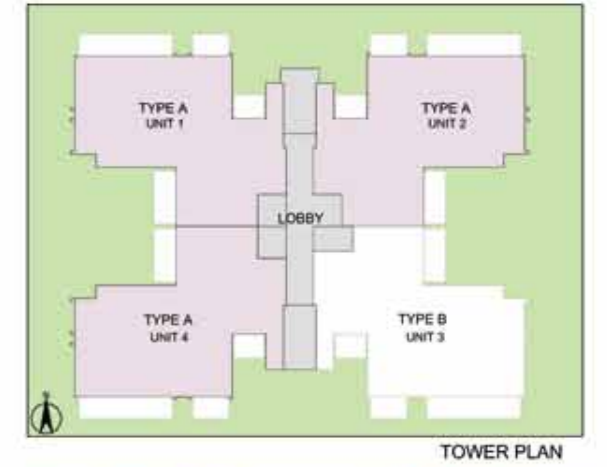
SALEABLE AREA - 2550 sq.ft. (236.90 sq.mt.)
UNIT NO. : J103 - J2103

In the interest of maintaining high standards, all floor plans, areas, dimensions, specifications, amenities, images etc. are indicative and are subject to change as decided by the Developer or by any Competent Authority. Soft furnishing, furniture and gadgets are not part of the offering.

4 BHK + POWDER ROOM + SERVANT ROOM - TYPE A
TOWER - J



4 BHK + POWDER ROOM + SERVANT ROOM - TYPE A
TOWER - H



OYSTER
GRANDÉ

SALEABLE AREA - 3198 sq.ft. (297.10 sq.mt.)

UNIT NO. : J101 - J2101
J102 - J2102
J104 - J2104

In the interest of maintaining high standards, all floor plans, areas, dimensions, specifications, amenities, images etc. are indicative and are subject to change as decided by the Developer or by any Competent Authority. Soft furnishing, furniture and gadgets are not part of the offering.

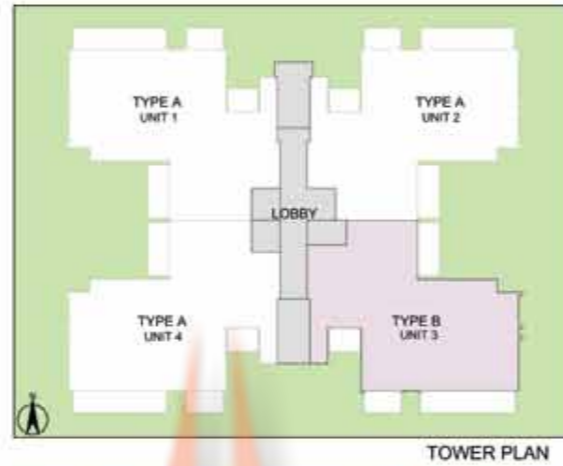
OYSTER
GRANDÉ

SALEABLE AREA - 3198 sq.ft. (297.10 sq.mt.)

UNIT NO. : H101 - H2101
H102 - H2102
H104 - H2104

In the interest of maintaining high standards, all floor plans, areas, dimensions, specifications, amenities, images etc. are indicative and are subject to change as decided by the Developer or by any Competent Authority. Soft furnishing, furniture and gadgets are not part of the offering.

4 BHK + POWDER ROOM + SERVANT ROOM - TYPE B
TOWER - H



OYSTER
GRANDÉ

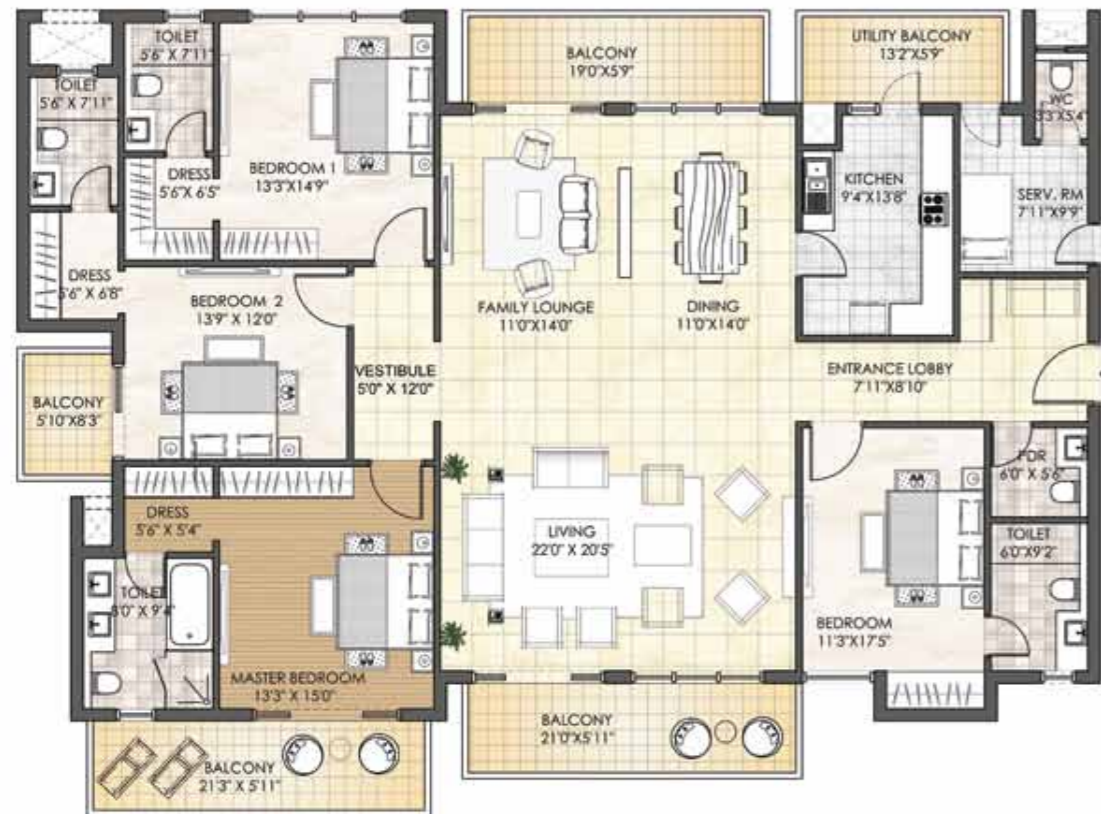
SALEABLE AREA - 3188 sq.ft. (296.17 sq.mt.)
UNIT NO. : H103 - H2103

In the interest of maintaining high standards, all floor plans, areas, dimensions, specifications, amenities, images etc. are indicative and are subject to change as decided by the Developer or by any Competent Authority. Soft furnishing, furniture and gadgets are not part of the offering.



OYSTER
GRANDÉ
Tower G View

4 BHK + FAMILY LOUNGE + POWDER ROOM + SERVANT ROOM - TYPE-A
TOWER - G

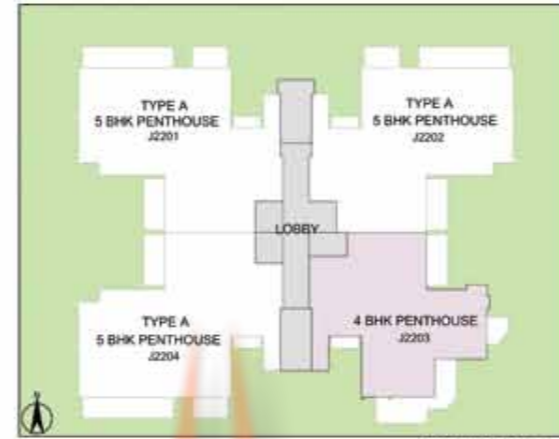


SALEABLE AREA - 4548 sq.ft. (422.52 sq.mt.)
 UNIT NO. : G101 - G2201
 G102 - G2202
 G103 - G1203

OYSTER
 GRANDÉ
 Swimming Pool

In the interest of maintaining high standards, all floor plans, areas, dimensions, specifications, amenities, images etc. are indicative and are subject to change as decided by the Developer or by any Competent Authority. Soft furnishing, furniture and gadgets are not part of the offering.

**PENTHOUSE - 4BHK
TOWER - J
LOWER PENTHOUSE PLAN**



TOWER PLAN

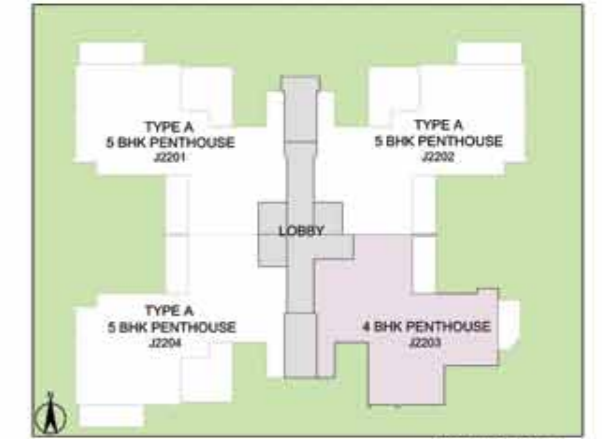


CLUSTER PLAN



KEY PLAN

**PENTHOUSE - 4BHK
TOWER - J
UPPER PENTHOUSE PLAN**



TOWER PLAN



CLUSTER PLAN



KEY PLAN

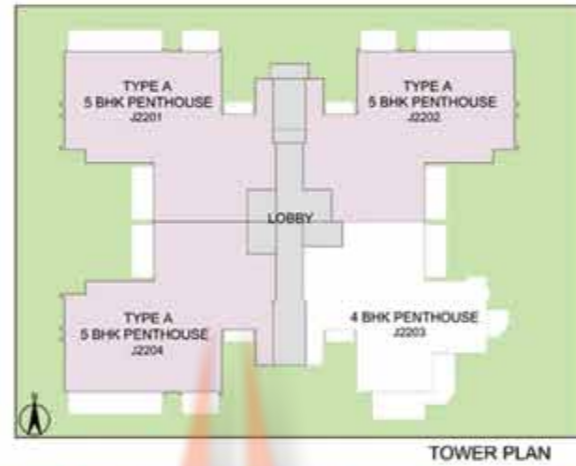
OYSTER
GRANDÉ

SALEABLE AREA - 4750 sq.ft. (441.29 sq.mt.)
UNIT NO. : J2203 (Lower Penthouse)

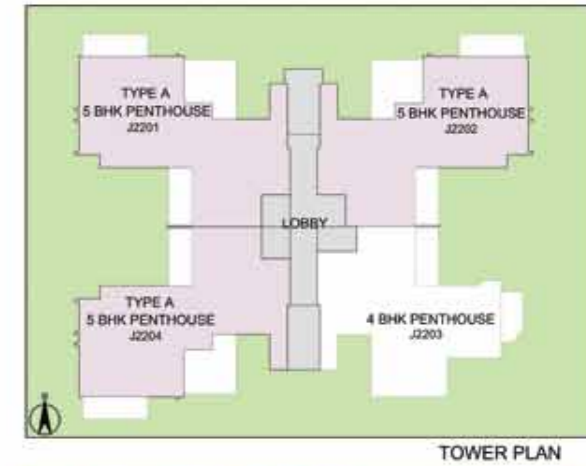
OYSTER
GRANDÉ

SALEABLE AREA - 4750 sq.ft. (441.29 sq.mt.)
UNIT NO. : J2203 (Upper Penthouse)

**PENTHOUSE - 5BHK - TYPE A
TOWER - J
LOWER PENTHOUSE PLAN**



**PENTHOUSE - 5BHK - TYPE A
TOWER - J
UPPER PENTHOUSE PLAN**



OYSTER
GRANDÉ

SALEABLE AREA - 5826 sq.ft. (541.25 sq.mt.)
UNIT NO. : J2201, J2202, J2204 (Lower Penthouse)

OYSTER
GRANDÉ

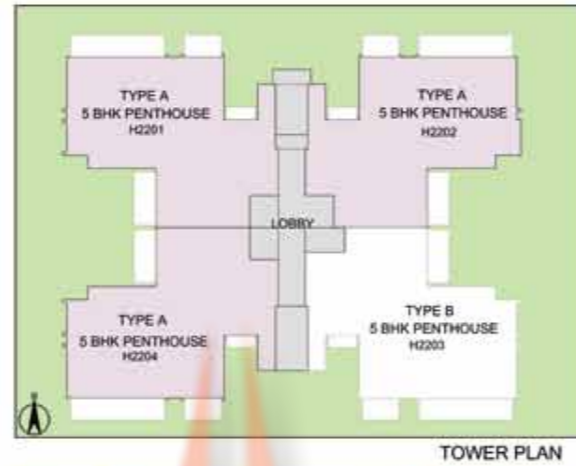
SALEABLE AREA - 5826 sq.ft. (541.25 sq.mt.)
UNIT NO. : J2201, J2202, J2204 (Upper Penthouse)



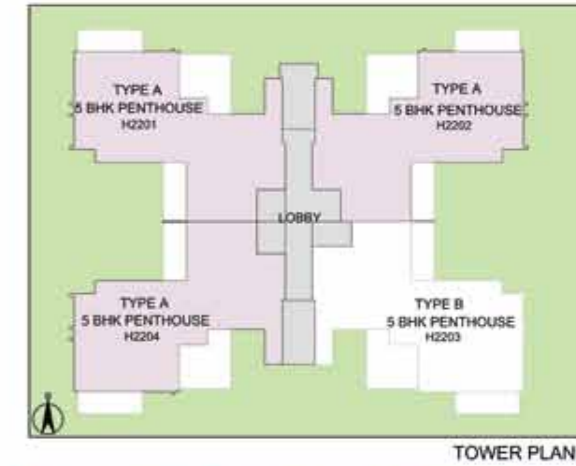
Power of Growth

OYSTER
— GRANDÉ —
Tennis Court

**PENTHOUSE - 5BHK - TYPE A
TOWER - H
LOWER PENTHOUSE PLAN**



**PENTHOUSE - 5BHK - TYPE A
TOWER - H
UPPER PENTHOUSE PLAN**



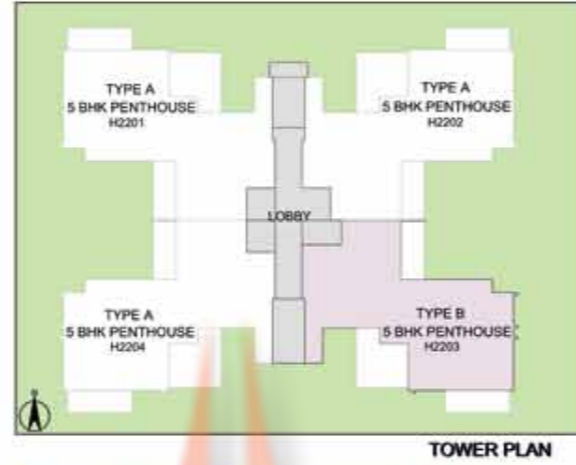
OYSTER
GRANDÉ

SALEABLE AREA - 5826 sq.ft. (541.25 sq.mt.)
UNIT NO. : H2201, H2202, H2204 (Lower Penthouse)

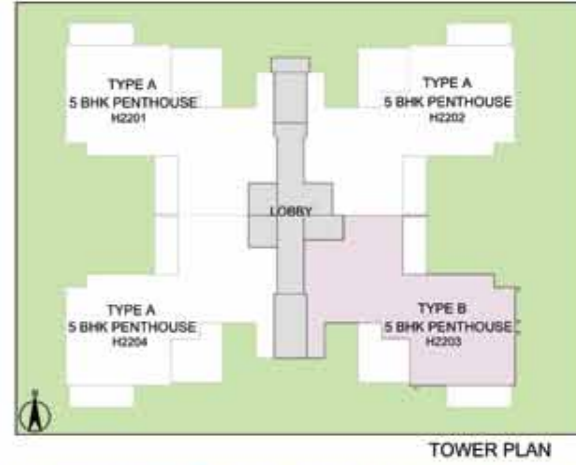
OYSTER
GRANDÉ

SALEABLE AREA - 5826 sq.ft. (541.25 sq.mt.)
UNIT NO. : H2201, H2202, H2204 (Upper Penthouse)

**PENTHOUSE - 5BHK - TYPE B
TOWER - H
LOWER PENTHOUSE PLAN**



**PENTHOUSE - 5BHK - TYPE B
TOWER - H
UPPER PENTHOUSE PLAN**



OYSTER
GRANDÉ

SALEABLE AREA - 5790 sq.ft. (537.90 sq.mt.)
UNIT NO. : H2203 (Lower Penthouse)

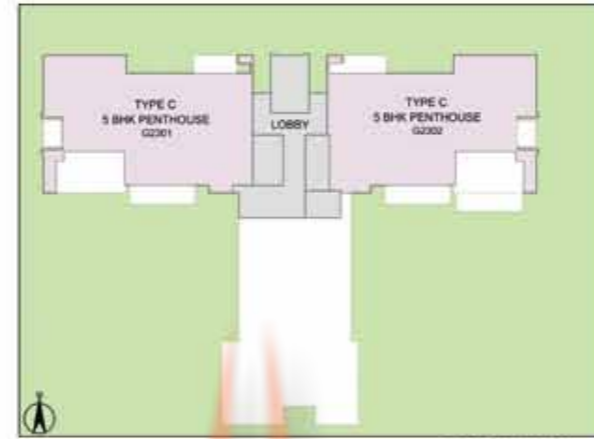
OYSTER
GRANDÉ

SALEABLE AREA - 5790 sq.ft. (537.90 sq.mt.)
UNIT NO. : H2203 (Upper Penthouse)



OYSTER
— GRANDÉ —
Elevations

**PENTHOUSE - 5BHK - TYPE - C
TOWER - G
LOWER PENTHOUSE PLAN**



TOWER PLAN

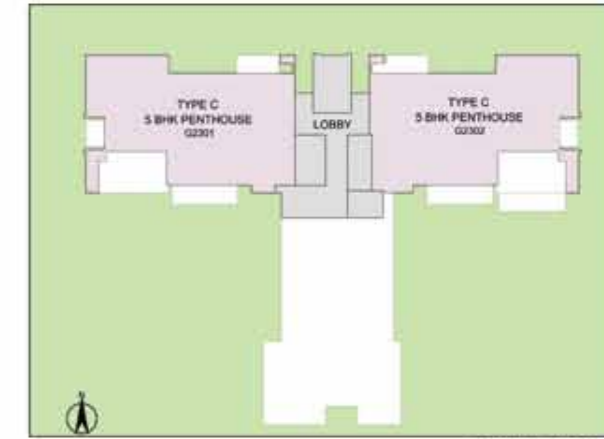


CLUSTER PLAN



KEY PLAN

**PENTHOUSE - 5BHK - TYPE - C
TOWER - G
UPPER PENTHOUSE PLAN**



TOWER PLAN



CLUSTER PLAN



KEY PLAN

OYSTER
GRANDÉ

SALEABLE AREA - 7283 sq.ft. (676.61 sq.mt.)
UNIT NO. : G2301, G2302 (Lower Penthouse)

OYSTER
GRANDÉ

SALEABLE AREA - 7283 sq.ft. (676.61 sq.mt.)
UNIT NO. : G2301, G2302 (Upper Penthouse)

SPECIFICATIONS

AREAS	FLOORING	WALLS	CEILING
LIVING / DINING / LOUNGE	Vitrified Tiles (800 x 800)	POP Punning with Acrylic Emulsion Paint	POP Punning with OBD
MASTER BEDROOM	Laminated Wooden Flooring (AC 4 Grade)	POP Punning with Acrylic Emulsion Paint	POP Punning with OBD
OTHER BEDROOM/S	Vitrified Tiles (600 x 600)	POP Punning with Acrylic Emulsion Paint	POP Punning with OBD
KITCHEN	Vitrified / Ceramic Tiles	Designer Tiles upto 2 ft. above Counter & Acrylic Emulsion Paint	POP Punning with OBD
BALCONIES / TERRACES	Anti-skid Ceramic Tiles	Weather Proof Paint	Weather Proof Paint
MASTER TOILET	Anti-skid Tiles	Designer Ceramic Tiles upto Ceiling	POP Punning with OBD
OTHER TOILETS	Anti-skid Tiles	Designer Ceramic Tiles upto Ceiling	POP Punning with OBD
SERVANT ROOM / UTILITY ROOM / SERVANT TOILET	Vitrified / Ceramic Tiles	Ceramic Tiles (Only in Toilets) otherwise POP punning with Acrylic Emulsion Paint	POP Punning with OBD
GROUND / STILT LIFT LOBBY	Imported / Composite Marble	Imported / Composite Marble	POP False Ceiling with Acrylic Emulsion Paint
TYPICAL FLOOR / BASEMENT LIFT LOBBY	Granite/ Marble/ Vitrified Tiles	Combination of Granite/ Marble/ Vitrified Tiles with Acrylic Emulsion / Texture Paint	POP Punning with OBD
POWER BACKUP	3BHK (TOWER D & E) / 3BHK + SERVANT ROOM (TOWER A,C, F) / 3BHK + POWDER ROOM + SERVANT ROOM (TOWER J) - 6KW, 3BHK + STUDY +		
COMMUNICATION / SECURITY*	FTTH - Integrated Fibre based Communication Network with 3 Tier CCTV Security and Electronic Surveillance System at Main Entrance & Tower		
ENVIRONMENT CONSERVATION	Rain Water Harvesting, Sewage Treatment Plant/s, Dual Plumbing provision for all Toilets, Water Saving Fixtures, Common Solar Water Heater for		
FEATURES*	Clubhouse with Main and Kids Pool, Unisex Gym, Muti-Purpose Hall, Creche, Indoor Games, Card Room and Coffee Bar. Tennis Court/s, Badminton Court/s,		

DOORS	WINDOW / GLAZING	OTHERS	ELECTRICALS
Main Door: Hardwood Door Frames with Laminated Flush Door / Solid Wood Panelled Door & Stainless Steel hardware fittings Other Doors: Hardwood Door Frames with Laminated Flush Doors / European Style Skin Moulded Door & Stainless Steel hardware fittings	Anodized Aluminium / uPVC windows	Split Air Conditioner	Modular Switches / Sockets, Telephone, Cable TV & Internet Socket
Hardwood Door Frames with Laminated Flush Doors / European Style Skin Moulded Door & Stainless Steel hardware fittings	Anodized Aluminium / uPVC windows	Split Air Conditioner	Modular Switches / Sockets, Telephone, Cable TV & Internet Socket
Hardwood Door Frames with Laminated Flush Doors / European Style Skin Moulded Door & Stainless Steel hardware fittings	Anodized Aluminium / uPVC windows	Split Air Conditioner	Modular Switches / Sockets, Telephone, Cable TV & Internet Socket
Hardwood Door Frames with Laminated Flush Doors / European Style Skin Moulded Door & Stainless Steel hardware fittings	Anodized Aluminium / uPVC windows	Modular Kitchen with Granite Counter & Double Bowl SS Sink, Exhaust Fan	Modular Switches / Sockets
		Mild Steel Railing. One Water Supply & One Drain Point in Utility Balcony	Modular Switches / Sockets, CFL Light Fixture
Hardwood Door Frames with Laminated Flush Doors / European Style Skin Moulded Door & Stainless Steel hardware fittings	Anodized Aluminium / uPVC windows	CP Fittings & Sanitary Fixtures, Granite Counter and Exhaust Fan	Modular Switches / Sockets
Hardwood Door Frames with Laminated Flush Doors / European Style Skin Moulded Door & Stainless Steel hardware fittings	Anodized Aluminium / uPVC windows	CP Fittings & Sanitary Fixtures, Granite Counter and Exhaust Fan	Modular Switches / Sockets
Hardwood Door Frames with Laminated Flush Doors / European Style Skin Moulded Door & Stainless Steel hardware fittings	Anodized Aluminium / uPVC windows	Chinaware and CP Fittings	Modular Switches / Sockets
		Kota Stone in Staircase on Floor with OBD / Texture Paint on Walls & MS Railing	
		Kota Stone in Staircase on Floor with OBD / Texture Paint on Walls & MS Railing	
POWER BACKUP	SERVANT ROOM (TOWER B) / 4BHK + POWDER ROOM + SERVANT ROOM (TOWER H & J) - 8KW, 4BHK + FAMILY LOUNGE + POWDER ROOM + SERVANT ROOM (TOWER G) - 10KW		
COMMUNICATION / SECURITY*	Entrances, Video Door Phone & Intercom, Fire Detection & Alarm System in all units		
ENVIRONMENT CONSERVATION	Kitchen, Energy saving CFL Lamps / LEDs in Common Areas		
FEATURES*	Preteen Play Areas, Tot Lot / Day Care, Mound Garden, Sculpture Garden, Colourful and Continuous Landscaping, Nursery School and Convenient Shopping		

*Extra charges as applicable



DISCLAIMER

This brochure is purely conceptual and not a legal offering. All images in this brochure are artist's conception. The Developer reserves its right to make changes at any time, without notice or obligation, to the information contained in this brochure, including and without limitation to layout, areas, location, amenities, specifications, etc. The Developer does not warrant or assume any legal liability or responsibility for the accuracy, completeness or usefulness of any information contained herein. (1 acre = 4046.856 sq.mt., 1 sq.mt. = 10.764 sq.ft., 1 mt. = 3.28 ft.) License No. 29 & 30 of 2012 dated 10/04/2012 granted to M/s. Aakarshan Estate Pvt. Ltd. in collaboration with M/s. Adani M2K Projects LLP by DTCP, Haryana. Building Plans approved vide Memo No. ZP-797/JD(BS)/2012/20300 dated 10/10/2012 comprising of 756 Normal Units, 134 EWS Units, 2 Nursery Schools, Convenient Shopping and Community Building. All statutory approvals are available for inspection at our office.