

# Sports ParC

SECTOR-92, GURGAON

Designed for your child's all-round development



# Sports: your child's nourishment

Besides the obvious health benefits, studies in sports psychology reveal that sport is an important learning environment for children. It helps children explore, invent and create. It also develops social skills, helps them learn to express their emotions, and gain confidence about their own capabilities. They learn strategy, fair play and goal definition, all of which contribute to bringing out the best in them.

*"Sports develops a child's leadership quality, boosts immunity and academic performance"*



+918470930121 | [www.abcbuildcon.in](http://www.abcbuildcon.in)



# Smart kids. Smarter parents.

Sports ParC has been designed with the insight that sports not only works wonders with children's health, but also sharpens their minds and personalities. Lack of playing spaces in our concrete cities is robbing our children of their very childhood and making them couch potatoes.

Sports ParC ushers in a new concept in active living. Its wide variety of professional and international standard sports facilities will make it every child's Dream Home.



+918470930121 | [www.abcbuildcon.in](http://www.abcbuildcon.in)



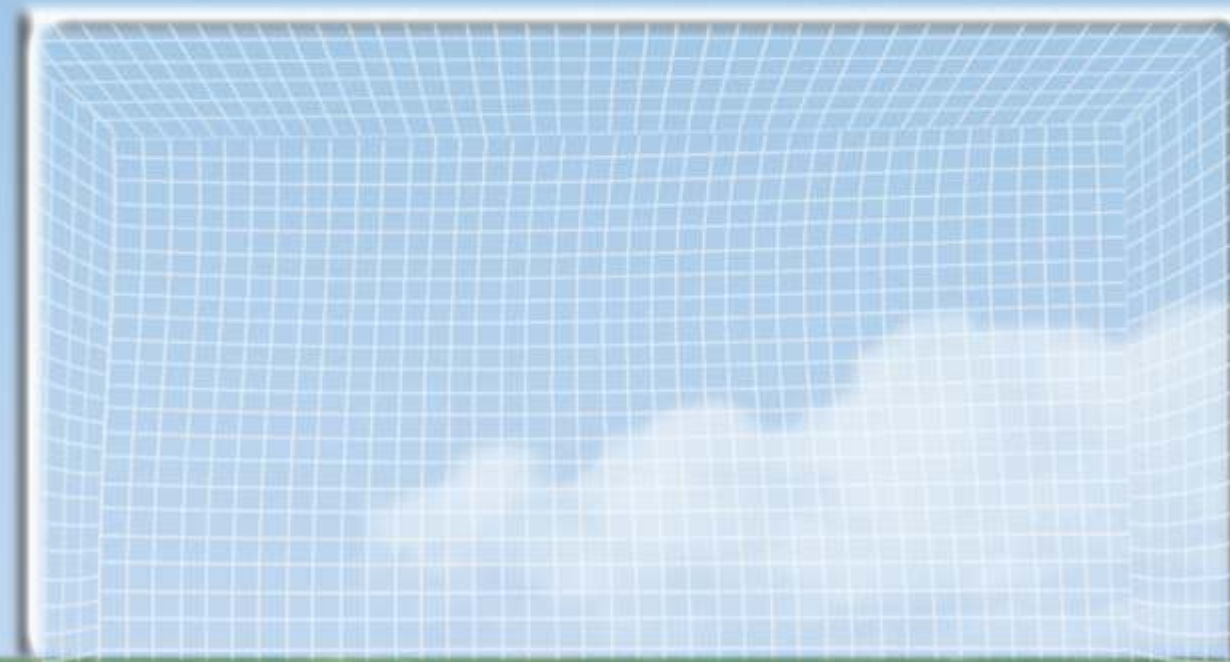
# Authentic astroturf



## Soccer

1 full-size field that  
converts to 2 separate  
grounds for  
7-a-side games.

Protective net fence.



+918470930121 | [www.abcbuildcon.in](http://www.abcbuildcon.in)



# Competition pool



## Swimming

Half-Olympic-size pool  
82 ft x 57 ft (25 m x 17.5 m)

7 lanes



# Full-length pitch



## Cricket

2 professionally-prepared  
training pitches

With safety nets





## World standard



### **Basketball**

Olympic-size outdoor court  
Professional quality flooring

## Cushioned courts



### **Badminton**

Full-size outdoor court

Synthetic floor for shock absorption,  
elasticity and stability



+918470930121 | [www.abcbuildcon.in](http://www.abcbuildcon.in)



# Turf courts



## Lawn tennis

2 full-size courts  
with acrylic surfacing



# Outdoor court



## Volleyball

Full-size court with  
artificial turf

+918470930121 | [www.abcbuildcon.in](http://www.abcbuildcon.in)



# Ready for more sports?



## Roller skating

Outdoor rink  
Cemented flooring



## Jogging

Jogging track  
Landscaped outdoor



## Boxing

Tough kid zone  
With Judo, Karate



## Rock climbing

12 ft-high structure  
Safety belts, soft floor



## Table tennis

Tournament tables



## Cycling

Cycling track  
Landscaped outdoor

+918470930121 | [www.abcbuildcon.in](http://www.abcbuildcon.in)



And more ...



### Pool table

And Billiards, Snooker



### Yoga

Meditation zone



### Spa

Sauna and steam



### Sand pit

In a protected area



### Toddler's park

6,000 sq ft (557.41 sq mtr)  
with soft safety flooring





+918470930121 | [www.abcbuildcon.in](http://www.abcbuildcon.in)



# SARE Quality Advantage

## **Planned as IGBC Gold rated Green Building**

Energy efficient with 24/7 solar heated potable water supplied to kitchens.  
Ground water recharge for subsoil upkeep.  
Solid waste management for creation of fertilizer and recyclable service water.

## **Seismic Zone 5 compliant construction**

1 level higher than the stipulated norm for earthquake resistance.

## **24x7 power back up and security**

No car parking on surface for pedestrian safety



+918470930121 | [www.abcbuildcon.in](http://www.abcbuildcon.in)





# Healthy living

Designed for maximum natural light and cross ventilation.  
Spacious balconies with breathtaking panoramic view.  
Separate living and dining areas with optimum privacy.

+918470930121 | [www.abcbuildcon.in](http://www.abcbuildcon.in)



# Sports lounges

The sports theme runs across  
the 17.2-acre gated township.



Each tower has a Sports Lounge.

Sports inspiration all around.

+918470930121 | [www.abcbuildcon.in](http://www.abcbuildcon.in)





# Location Advantage

Sports ParC is a residential hub amidst a business hub. Major commercial and institutional development has been earmarked in adjoining areas (marked in blue). Here lies the epicentre of a fast developing new Gurgaon with a promising future, bustling with easy connectivity.

## Business Hubs

Manesar .....	05 mins
Cyber City II .....	10 mins
IFFCO Chowk .....	25 mins

## Educational Institutions

IMT Manesar.....	10 mins
Delhi Public School.....	25 mins

## Hospitals

Rockland Hospital .....	10 mins
Artemis Hospital .....	22 mins

## Travel

Gurgaon Railway Station.....	28 mins
IGI Airport.....	45 mins

## More...

Banks.....	10 mins
Hyatt Regency.....	10 mins
HSIDC Manesar Golf Club.....	10 mins
MG Road.....	28 mins
Connaught Place.....	60 mins



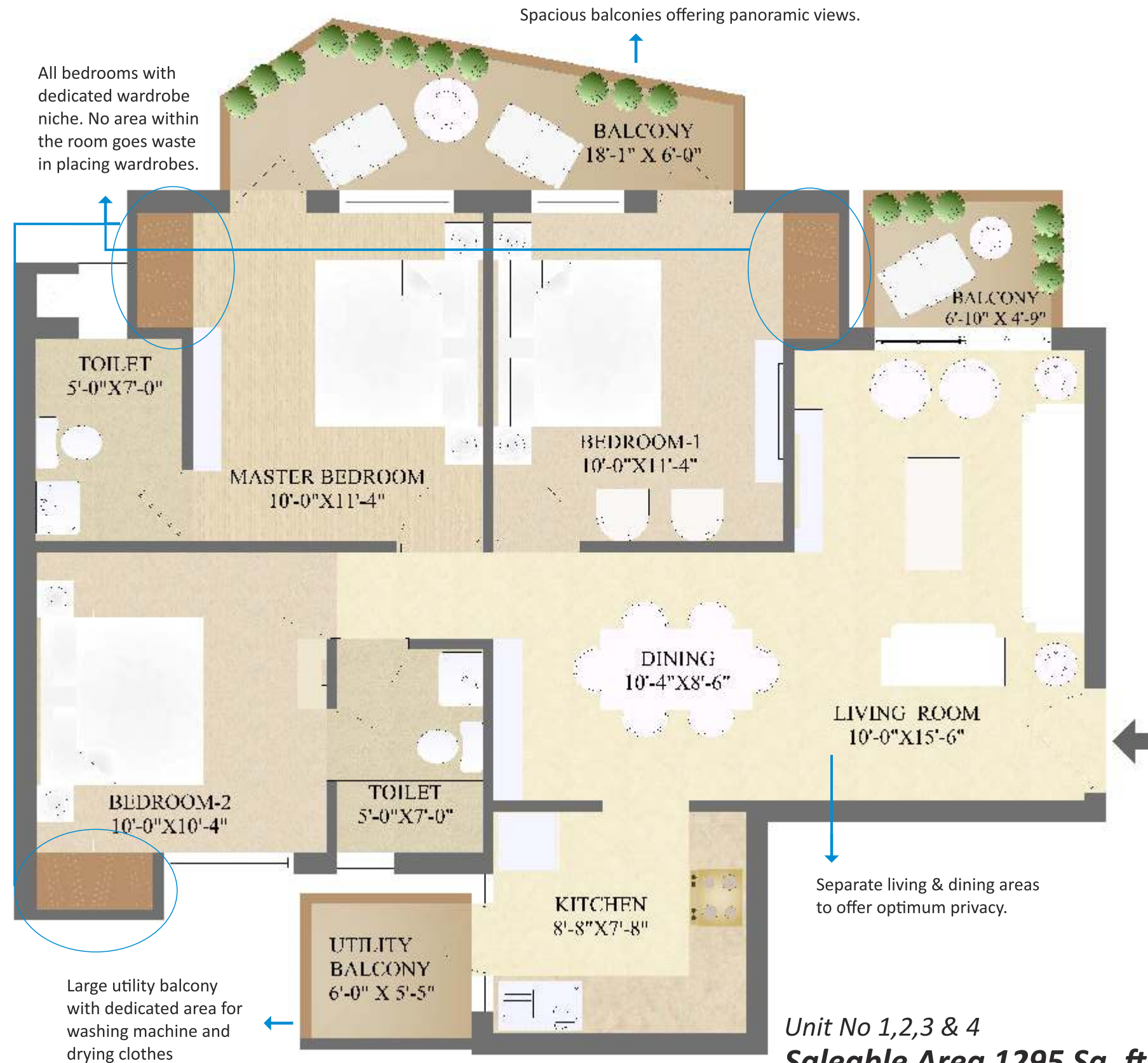
## Master Plan



## Phase Plan



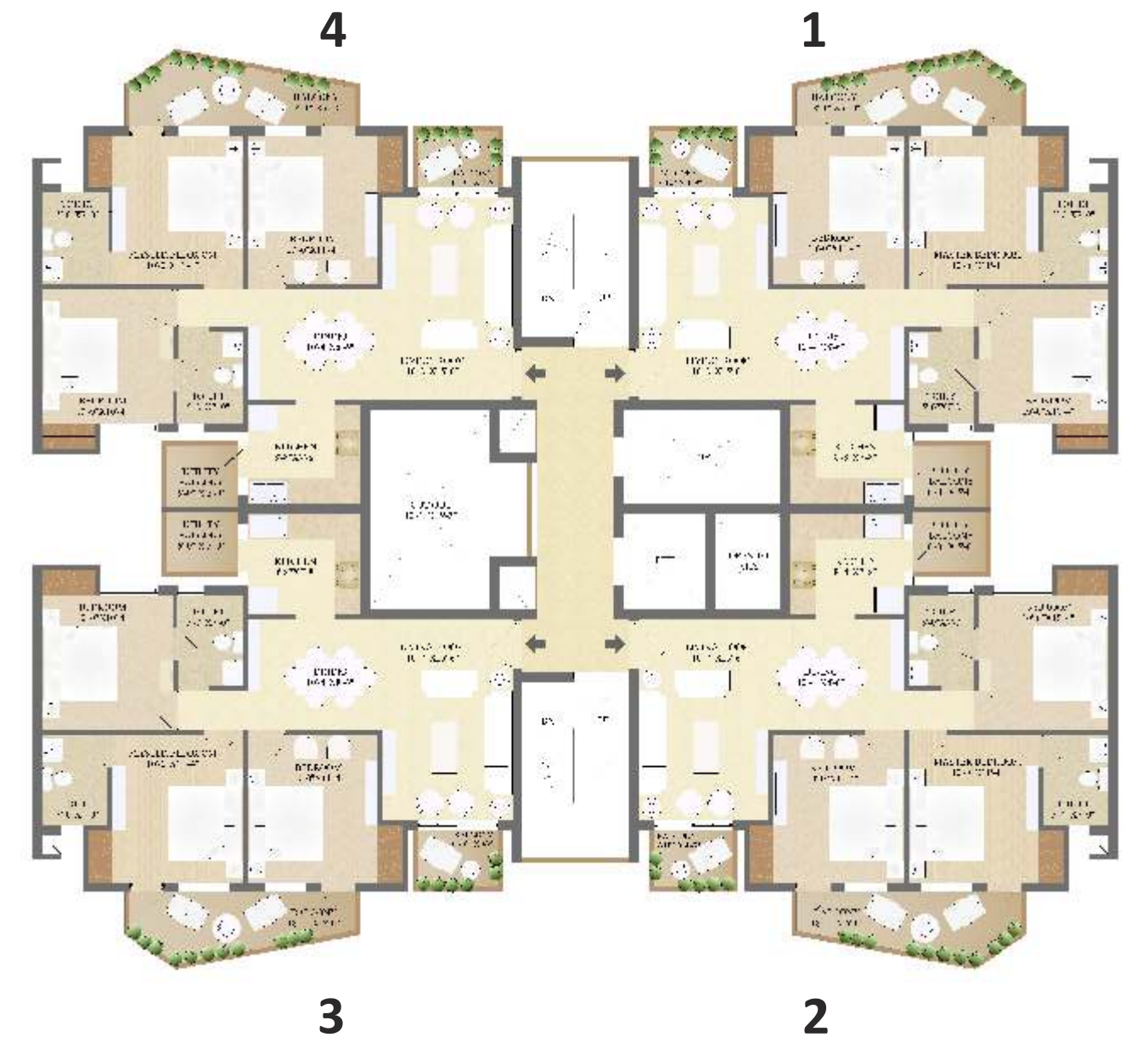




Unit No 1,2,3 & 4  
**Saleable Area 1295 Sq. ft.**  
 (120.30 sq mtr)

## Floor Plan - 3 BHK + 2T

Just 4 apartments per floor. Open lobby areas and ample privacy.  
 Abundant sunlight and cross ventilation.

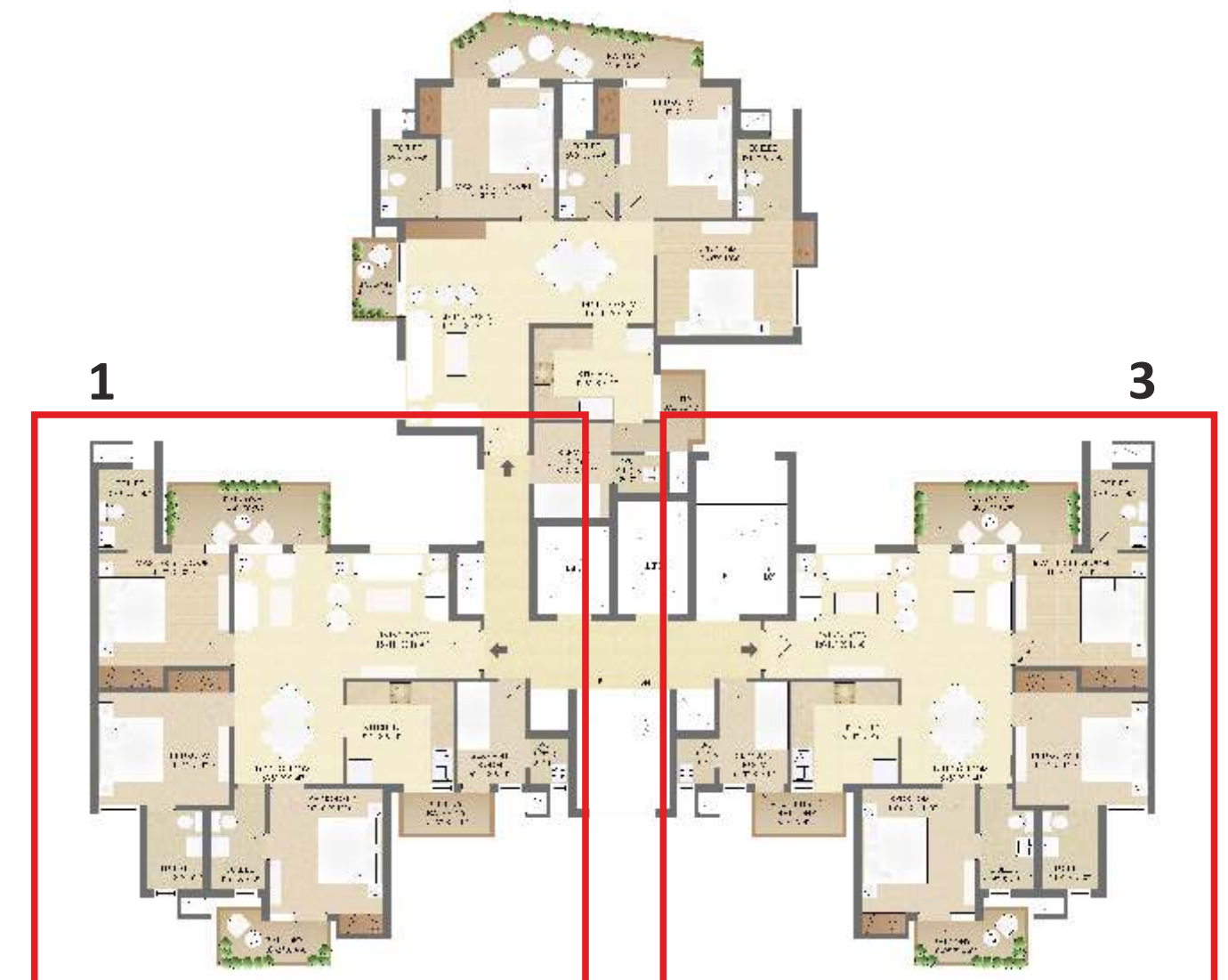


2  
 Typical Cluster Plan  
 Tower -A1 & A2



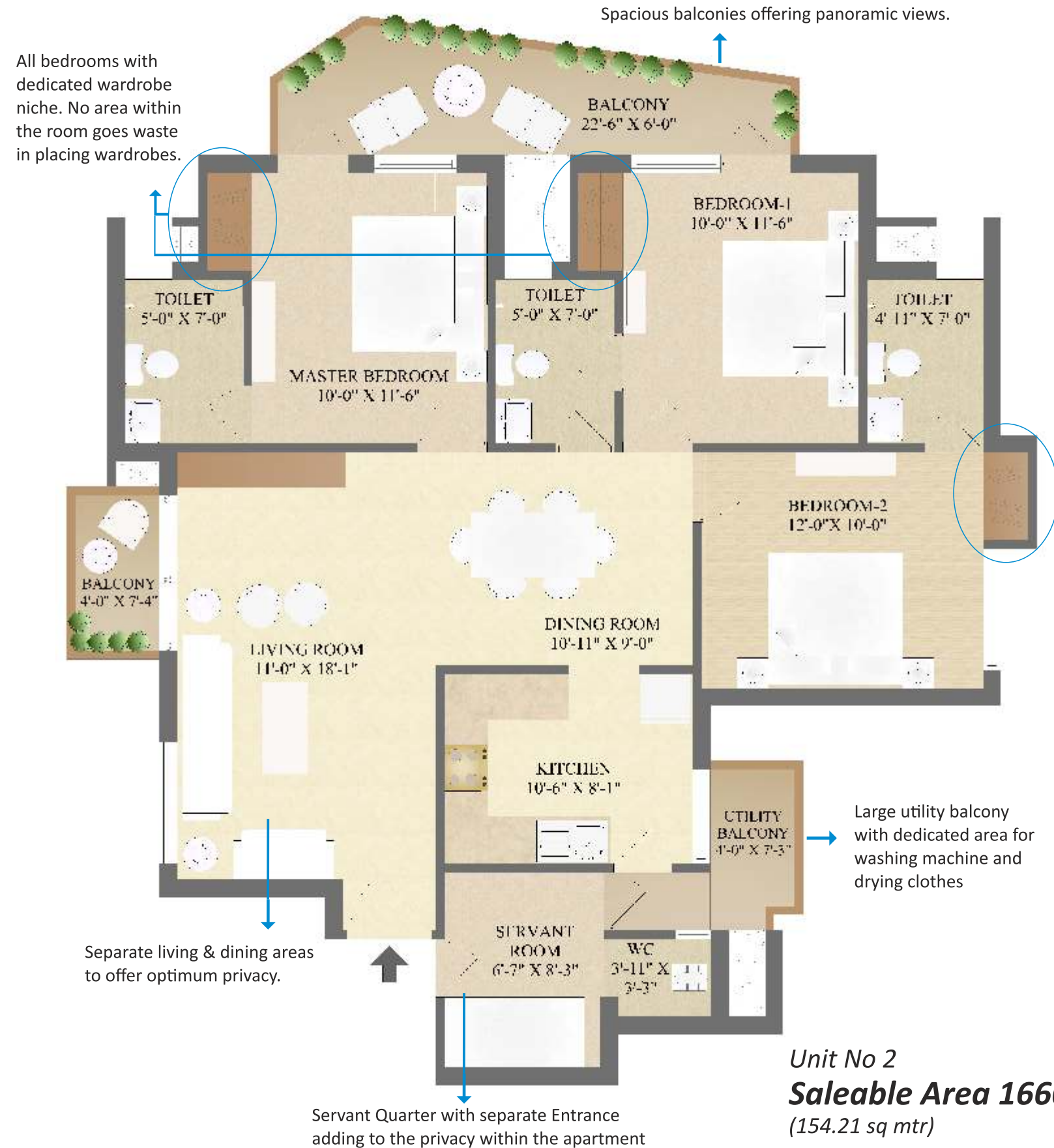
# Floor Plan - 3BHK + 3T + Sqt

Just 3 apartments per floor. 3-side open apartment. Open lobby areas and ample privacy  
Abundant sunlight and cross ventilation.



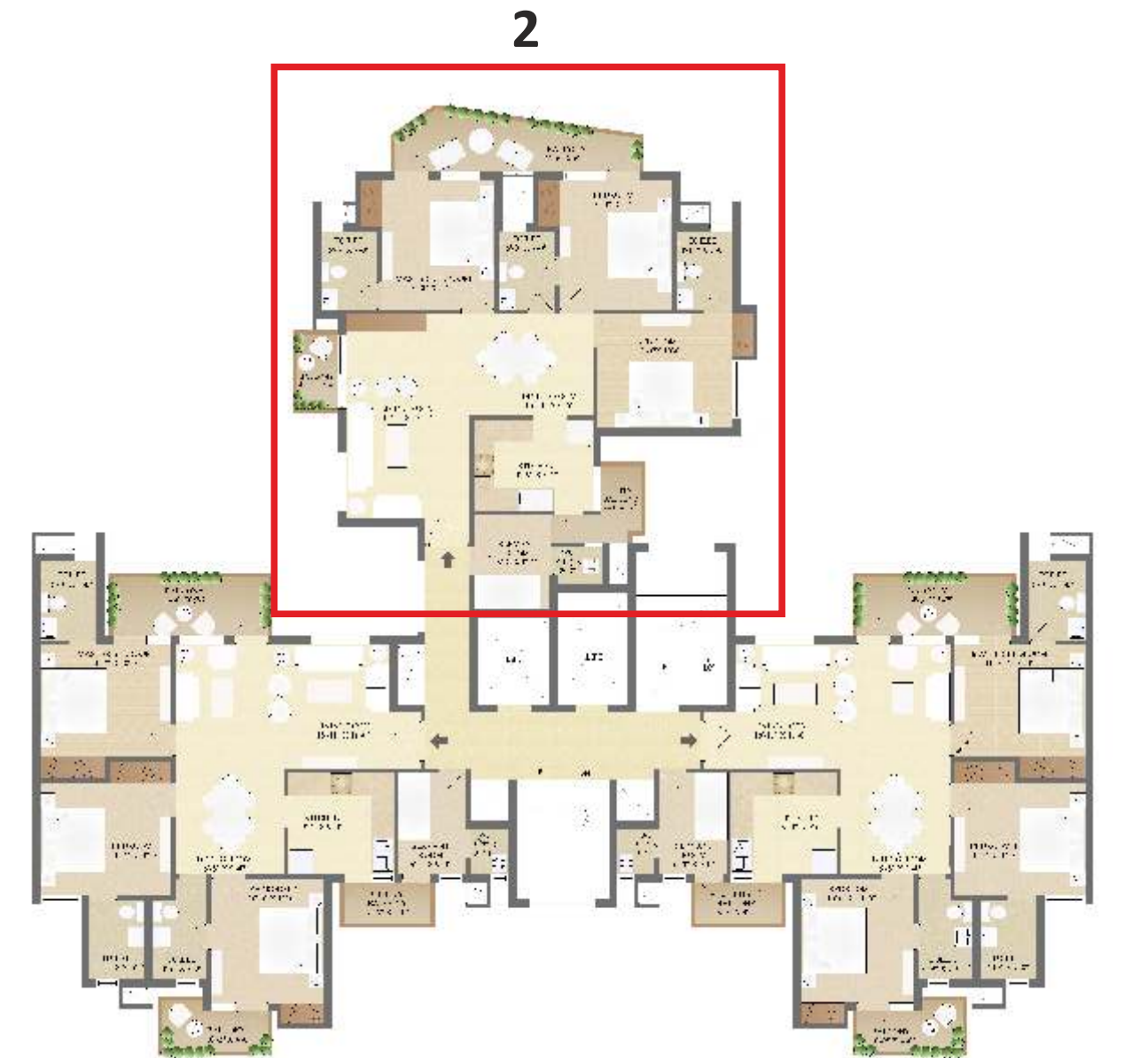
Typical Cluster Plan  
Tower -B1, B2 & B3





# Floor Plan - 3BHK + 3T + Sqt

Just 3 apartments per floor. 3-side open apartment. Open lobby areas and ample privacy  
 Abundant sunlight and cross ventilation.



Typical Cluster Plan  
 Tower -B1, B2 & B3



# Specification

Specification Living / Dining	Flooring	: Vitrified Tiles
	Wall Finish	: Plastic emulsion in pleasing shades
Master Bedroom	Flooring	: Laminated wooden Flooring
	Wall Finish	: Plastic emulsion in pleasing shades
Bedrooms	Flooring	: Vitrified Tiles in other Bedrooms
	Wall Finish	: Plastic emulsion in pleasing shades
Toilet	Wall finish	: Combination of ceramic tiles, Oil bound distemper & Mirror
	Counter	: Polished granite in Master Bedroom Toilet
	Flooring	: Ceramic tiles
Kitchen	Fittings	: White vitreous China ware. Chrome plated tap fittings of standard make
	Flooring & Dado	: Ceramic tiles
	Platform	: Granite counter
	Wall Finish	: Ceramic tiles 2ft above the counter and plastic emulsion in pleasing shades on the

Others		balance area
		: Single bowl stainless steel sink with drain board
Balconies	Flooring	: Porcelain / Ceramic Tiles
	Ceiling	: Oil bound distemper
	Window	: Powder coated / Anodised Aluminium windows
Doors		: Polished hardwood frame with moulded skin door
Chinaware		: Parryware or equivalent
C.P fittings		: Modern & elegant
Electrical		: Copper wiring with modular switches
Power Backup		: Adequate power backup for common area
		2.5 KVA for 3BHK + 2 T
		3.5 KVA for 3BHK + 3T + Sqt
Security		: Gated Community



# The reassurance of SARE Homes



## International association

S.A.R.E. plc is an offshore fund promoted by Duet Group focussed on developing residential real estate in India. SARE has a strong balance sheet and its assets in India are valued at Rs. 4,100 crores with nominal leverage. The fund's equity is held by global institutional investors like Forum Partners and Goldman Sachs Principal Strategy (GSPS) Asia Ltd.



## IGBC Certification

SARE Homes believes in green living. Our townships are designed with infrastructural necessities and indulgences like landscaped greens, for healthy, self-sufficient community living. We have also received Indian Green Building Council (IGBC) certifications.



## Approvals and CREDAI Membership

SARE Homes takes pride in working to uncompromising quality standards and maintaining transparency in all dealings. All SARE Homes carry approvals and sanctions from the relevant authorities. It is also a member of the Confederation of Real Estate Developers' Associations of India that ensures observance of code of conduct.



## Accolades

SARE Homes has gained industry recognition in a number of different categories and locations. These awards are a recognition of its passion for excellence, commitment to customers and is a harbinger of the growth it envisions for itself in the industry. SARE homes has been awarded Best Emerging Developer – Pan India – by NDTV, and for On-time Project Delivery – Pan India – by NAREDCO, amongst others.



## Our biggest hallmark

At SARE Homes we assign top priority to fulfilling committed schedules and delivering possession on time. Our FDI funding, strong management team and streamlined processes ensure uninterrupted construction progress. Our on-time delivery across all projects stands testimony to this commitment.



## Thoughtful conveniences

Our townships offer conveniences that enable joyful and comfortable living. They include professional management services (managed by JLL), round-the-clock security, 24 hour power back-up, adequate water supply, rainwater harvesting, schools, shopping, organised parking, kids' play areas, community bus-shuttle services, IGBC certifications and various modern club facilities.



## Home called India

SARE Homes has a strategy to invest and develop townships on a pan-India basis. SARE Homes currently has residential projects at Ghaziabad, Gurgaon, Amritsar, Chennai, and Indore. With proposed projects at Ahmedabad, Navi Mumbai, Bangalore, NCR and Kolkata, we are actively seeking to expand our portfolio across India.



## Gurgaon presence

SARE Homes has been offering mixed residential opportunities in Gurgaon in a phased manner. With SARE Crescent ParC Phase I, II, III, Petioles, The Grand & Club Terraces.

Our latest offering is Sports ParC.